

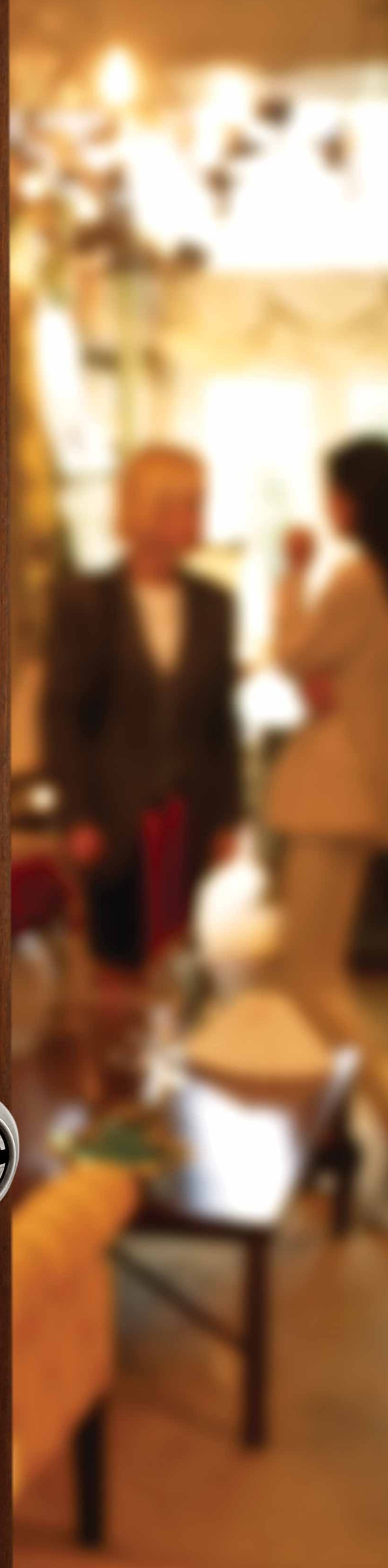


## B500 Series

The B500 Series deadbolt is a revolutionary new deadbolt that delivers higher security, tougher performance and the ultimate in installation versatility.

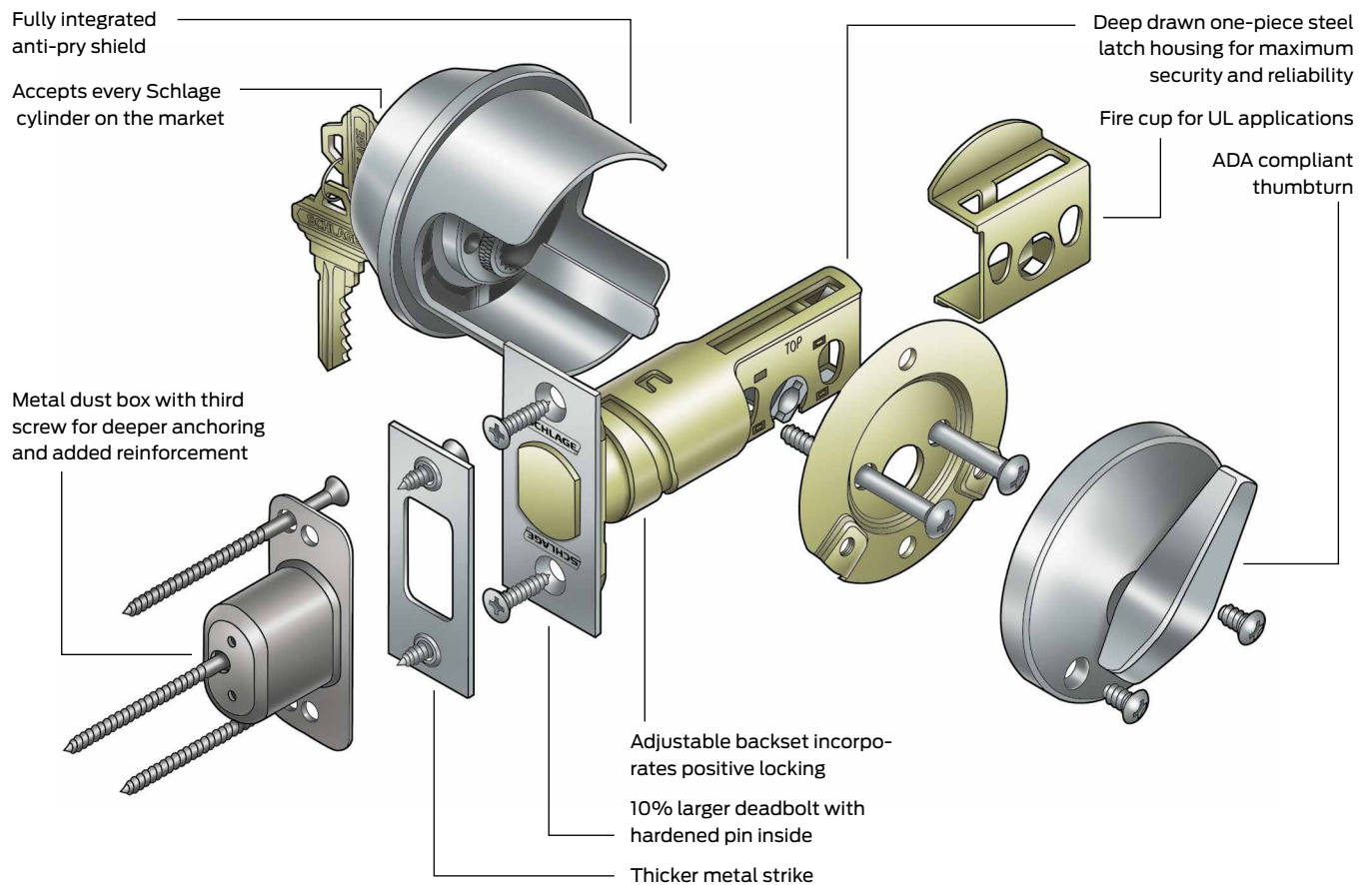
Designed by locksmiths for locksmiths, the B500 Series deadbolt can be fitted with any Schlage cylinder, fits virtually every door you service, enhances lock strength on the jamb side of the door and will change forever the way you look at deadbolts.

Pictured here: B500 (Grade 2) deadbolt with ND Series Athens lever shown in 626 satin chrome



# The best deadbolt ever designed by locksmiths

- Adjustable backset with lock-in-place helix design
- Integrated anti-pry shield protects latch
- Thicker metal security strike back-up on jamb side
- Security strike on jamb has third screw for stronger, deeper anchoring
- Added space inside strike box for true deadlatch
- Seamless steel construction from beginning of latch to back of bolt
- 10% larger diameter deadbolt
- Zinc bolt with spinning hardened steel pin inside
- Tapered front housing that can't be unscrewed
- Integrated trim piece for fewer pieces out of the box
- Large, easy-to-use, ADA compliant thumbturn



# Deadbolt designs

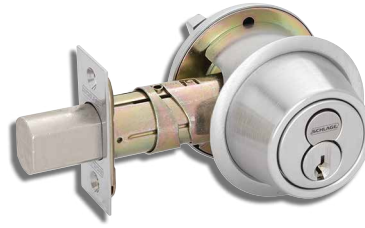
## B500 Series

A versatile and economical Grade 2 deadbolt for medium duty commercial and heavy duty residential applications.

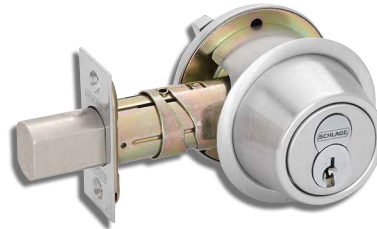
Furnished with conventional cylinder standard.

Available with Primus XP high security cylinder, Primus XP UL437 Listed high security cylinder, full size interchangeable core cylinder, Primus XP interchangeable core cylinder, or small format interchangeable core (SFIC) cylinder.

Fits 2 1/8" (54 mm) prep standard and anti-pry shield can be removed to fit 1 1/2" (38 mm) prep.



Full size interchangeable core



Small format interchangeable core



Thumbturn for B500



Design shown in 626 satin chrome plated



B500 Series with occupied indicator (B571)

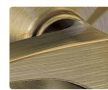
# Deadbolt finishes



**605**  
Bright brass



**606**  
Satin brass



**609**  
Antique brass



**612**  
Satin bronze



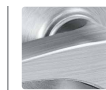
**613**  
Oil rubbed bronze



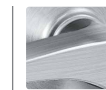
**619**  
Satin nickel



**625**  
Bright chromium plated



**626**  
Satin chromium plated



**626AM**  
Antimicrobial coating



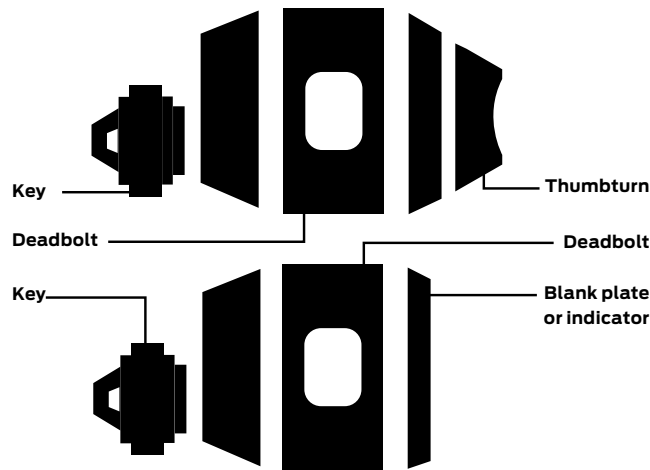
**643e**  
Aged bronze





Product	605	606	609	612	613	619	625	626	626AM	643e
B500	.	.	.	.	.	.	.	.	.	.

e = an equivalent finish to the BHMA standard.

# Deadbolt functions

## ANSI A156.5 bored deadbolt locks



-  Standard cylinder.
-  FSIC - full size interchangeable core option.
-  SFIC - small format interchangeable core option.
-  Complies with ADA Accessibility Guidelines.

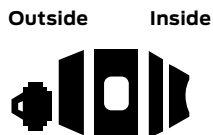
### \*Caution:

Double cylinder locks on any door are a life safety hazard in times of emergency and their use is not recommended. Installation should be in accordance with existing codes only.

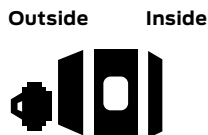
### ADA compliant:

Schlage Lock Company offers a wide selection of locks designed to meet the Americans with Disabilities Act.

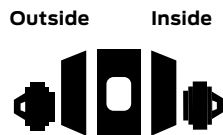
Schlage	ANSI
<b>B560P</b>	<b>E0152</b>
<b>Single cylinder deadbolt</b>	
<ul style="list-style-type: none"> <li>• Deadbolt thrown or retracted by key outside or thumbturn inside.</li> </ul>	



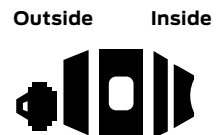
Schlage	ANSI
<b>B561</b>	<b>E0162</b>
<b>Cylinder only x blank plate deadbolt</b>	
<ul style="list-style-type: none"> <li>• Deadbolt thrown or retracted by key outside.</li> <li>• Blank plate with exposed screws inside.</li> </ul>	



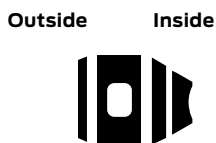
Schlage	ANSI
<b>B562P*</b>	<b>E0142</b>
<b>Double cylinder deadbolt</b>	
<ul style="list-style-type: none"> <li>• Deadbolt thrown or retracted by key either side.</li> </ul>	



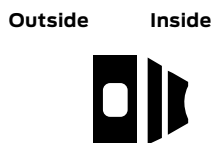
Schlage	ANSI
<b>B563</b>	<b>E0172</b>
<b>Classroom deadbolt</b>	
<ul style="list-style-type: none"> <li>• Deadbolt thrown or retracted by key outside.</li> <li>• Inside units retracts bolt only.</li> </ul>	



Schlage	ANSI
<b>B571</b>	-
<b>Door bolt occupancy indicator</b>	
<ul style="list-style-type: none"> <li>• Deadbolt thrown or retracted by thumbturn inside</li> <li>• Outside indicator displays "In use" or "Vacant"</li> <li>• Requires 1 1/2" cross bore prep</li> <li>• Not UL rated</li> </ul>	



Schlage	ANSI
<b>B580</b>	<b>E0192</b>
<b>Door bolt</b>	
<ul style="list-style-type: none"> <li>• Deadbolt thrown or retracted by trim unit only.</li> <li>• Requires 1 1/2" cross bore prep</li> </ul>	



Schlage	ANSI
<b>B581</b>	<b>E01112</b>
<b>Door bolt with trim</b>	
<ul style="list-style-type: none"> <li>• Deadbolt thrown or retracted by trim unit only.</li> <li>• Blank plate outside.</li> <li>• Requires 1 1/2" cross bore prep</li> </ul>	

