

# FALCON®

## SC70A Series

Heavy duty, Grade 1 door control

### Overview

Falcon® SC70A Series heavy duty closers are built for applications that demand reliable door control and easy maintenance. The SC70A Series closers are ANSI Grade 1, ADA compliant and deliver tough performance at an unbeatable value. Choose the SC70A for interior or exterior doors in retail shops, restaurants, apartments, small offices and a variety of other high traffic applications.

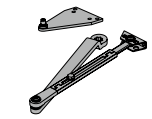
#### Features and benefits:

- Fully adjustable sizes 1-6
- Separate adjustable general speed, latch speed and backcheck
- Common industry hole pattern
- Non-handed for left or right swinging doors
- Double heat-treated pinion
- 1 1/2" diameter, heat-treated forged steel piston
- Listed ANSI/BHMA A156.4, Grade 1
- Meets ANSI A117.1
- Cover is UL approved for use in fire rated assemblies
- UL listed and compliant to UL10C and UBC 7-2 (1997)
- Comes standard with universal screw pack, including self reaming and tapping screws

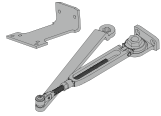


# The right accessories for every job

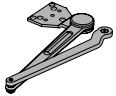
The non-handed design of the SC70A Series and its quick and easy installation make it perfect for any high traffic application where Grade 1 heavy duty performance is needed.



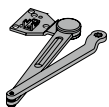
**Regular (RW/PA)**



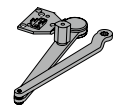
**Hold open (HW/PA)**



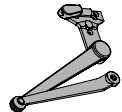
**Heavy-duty regular (HD/PA)**



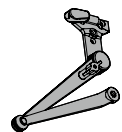
**Dead stop (DS)**



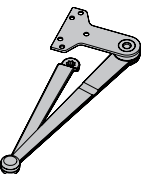
**Dead stop hold open (DS/HO)**



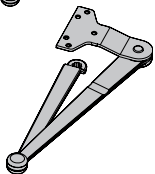
**Spring-n-Stop (SS)**



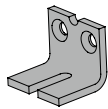
**Spring-n-Stop hold open (SS/HO)**



**Forged arm (FA)**

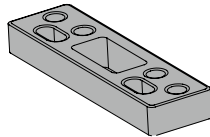


**Forged arm with hold open (FA/HO)**



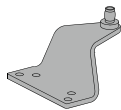
## **Soffit shoe support**

Provides anchorage for fifth screw used with soffit shoe where reveal is less than 3 1/16" (78mm).



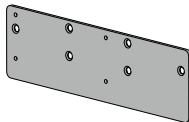
## **Blade stop spacer**

Required to lower parallel arm shoe to clear 1/2" (13mm) blade stop.



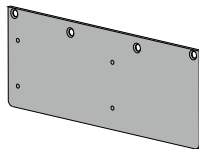
## **Auxiliary shoe**

Requires a top rail of 7" (178mm). Optional shoe replaces PA shoe for parallel arm mounting of regular arm with overhead holder/stop.



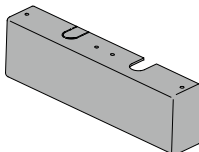
## **Plate**

Required for hinge side mount where top rail is less than 3 7/8" (98mm). Required for top jamb mounting where head frame is less than 3 7/8" (98mm).



## **Parallel arm plate**

Required for parallel arm mounting where top rail is less than 6" (152 mm), measured from the stop. Plate requires 1 3/4" (44mm) minimum top rail measured from stop.



## **Cover**

Standard, non-handed, full plastic cover encloses the closer body.

## Available finishes



622  
Matte black



689  
Aluminum



695  
Dark bronze



696  
Brass

## About Allegion

Allegion (NYSE: ALLE) is a global pioneer in safety and security, with leading brands like CISA®, Interflex®, LCN®, Schlage®, SimonsVoss® and Von Duprin®. Focusing on security around the door and adjacent areas, Allegion produces a range of solutions for homes, businesses, schools and other institutions. Allegion is a \$2 billion company, with products sold in almost 130 countries. For more, visit [www.allegion.com](http://www.allegion.com).

# SC70A Series



Falcon SC70A Series heavy duty closers are built for applications that demand reliable door control and easy maintenance. The SC70A Series closers are ANSI grade 1, ADA compliant and deliver tough performance. Choose the SC70A for interior or exterior doors in retail shops, restaurants, small offices and many other high traffic applications.

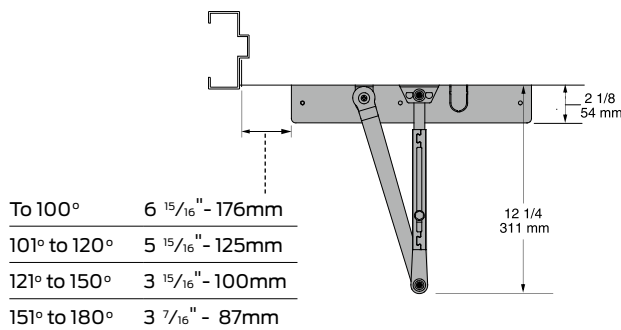
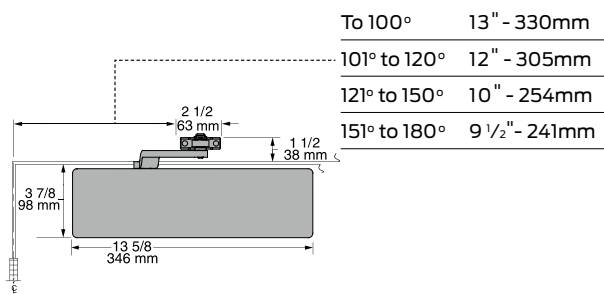
## Standard features

- Fully adjustable sizes 1-6
- Separate adjustable general speed, latch speed and backcheck
- Closer mounts hinge side, top jamb or parallel arm when either the RW/PA or HW/PA arm is specified
- Non-handed for left or right swinging doors
- 1 1/2" diameter heat treated steel piston
- Double heat-treated pinion
- Universal screw pack for aluminum, hollow metal, and wood doors, includes self reaming and tapping screws
- Staked valves
- Meets ANSI A117.1
- Listed ANSI/BHMA A156.4, grade 1
- UL listed and compliant to UL10C and UBC 7-2 (1997)
- Fast and easy installation
- 10-year warranty
- Available in aluminum, brass, dark bronze, and matte black

## Listings and ratings

The Falcon SC71A is UL approved and compliant with the UL 10C and UBC 7-2 (1997) fire test. Additionally, the SC71A is rated ANSI/BHMA A156.4, grade 1 and designed to meet the American Disabilities Act (ADA) and ANSI A117.1

## SC70A Series hinge (pull side)



**Butt hinges** should not exceed 5" (127mm) in width.

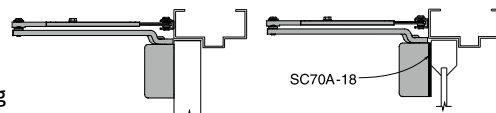
**Auxiliary stop** is recommended at hold-open point or where a door cannot swing 180°.

**Reveal** should not exceed 3/4" (19mm) for regular arm or hold-open arm.

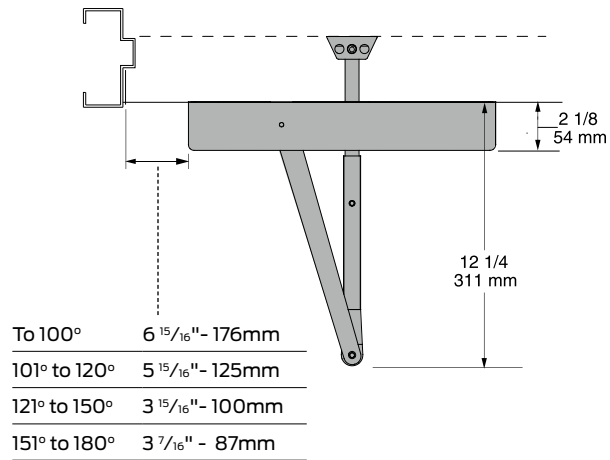
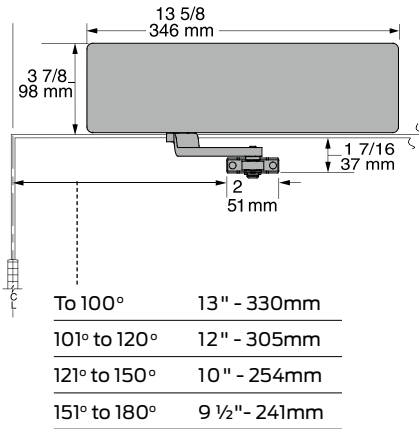
**Top rail** less than 3 7/8" (98mm) requires plate SC70A-18.

**Clearance** of 2 1/8" (54mm) behind door required for 90° installation.

**Delayed action** add suffix "DEL" to selected cylinder (ex. SC70A DEL). Delays closing from maximum opening to approx. 70°, with adjustable delay time.



## SC70A Series top jamb (push side)



**Butt hinges** should not exceed 5" (127mm) in width.

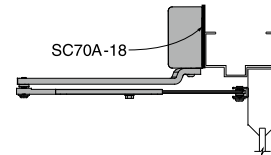
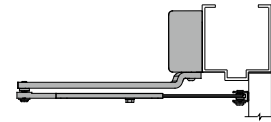
**Auxiliary stop** is recommended at hold-open point or where a door cannot swing 180°.

**Reveal** should not exceed 3 1/4" (83mm) for regular arm or hold-open arm.

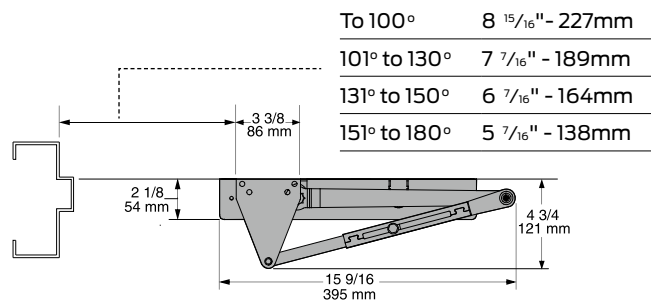
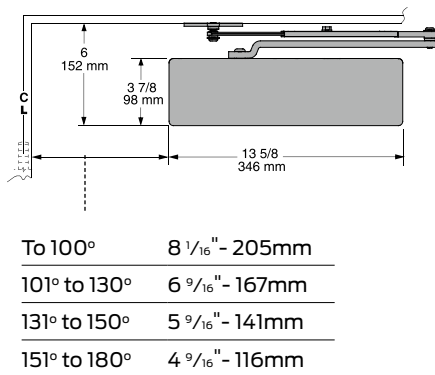
**Top rail** of 1 1/2" (38mm) required.

**Head frame** less than 3 7/8" (98mm) requires plate SC70A-18.

**Delayed action** add suffix "DEL" to selected cylinder (ex. SC70A DEL). Delays closing from maximum opening to approx. 70° with adjustable delay time.



## SC70A Series parallel (push side)

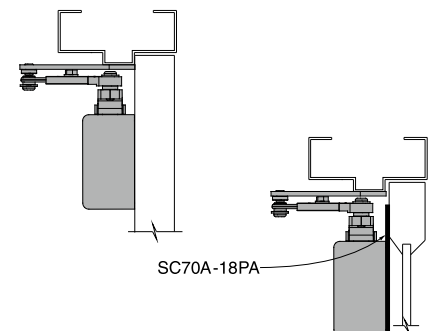


**Butt hinges** should not exceed 5" (127mm) in width.

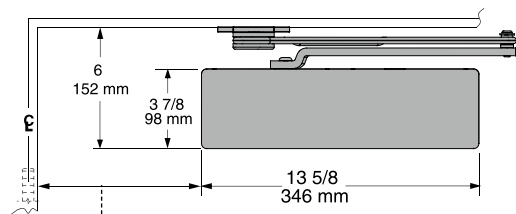
**Auxiliary stop** is recommended at hold-open point or where a door cannot swing 180°.

**Top rail** less than 6" (152mm) measured from stop requires plate SC70A-18PA.

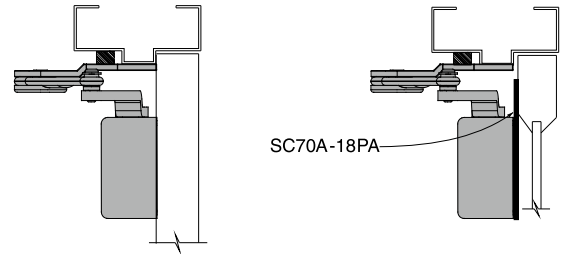
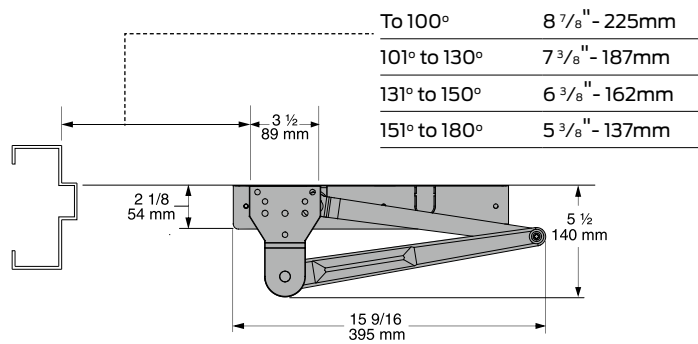
**Delayed action** add suffix "DEL" to selected cylinder (ex. SC70A DEL). Delays closing from maximum opening to approx. 70° with adjustable delay time.



## SC70A Series heavy duty (parallel)



To 100°	8 1/16" - 205mm
101° to 130°	6 9/16" - 167mm
131° to 150°	5 9/16" - 141mm
151° to 180°	4 9/16" - 116mm



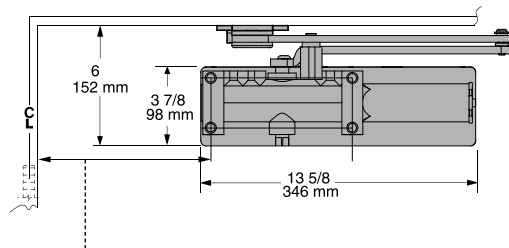
**Butt hinges** should not exceed 5" (127mm) in width.

**Auxiliary stop** is recommended at hold-open point, where a door cannot swing 180°, or where dead stop or spring-n-stop arm is not used.

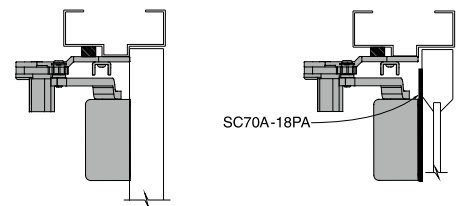
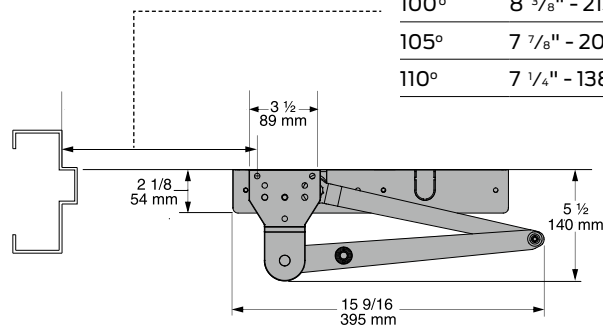
**Top rail** less than 6" (152mm) measured from stop requires plate SC70A-18PA.

**Delayed action** add suffix "DEL" to selected cylinder (ex. SC70A DEL). Delays closing from maximum opening to approx. 70°, with adjustable delay time.

## SC70A Series dead stop HO (parallel)



85°	10 1/8" - 257mm
90°	9 1/4" - 235mm
95°	8 5/8" - 219mm
100°	7 7/8" - 200mm
105°	7 3/8" - 187mm
110°	6 3/4" - 171mm

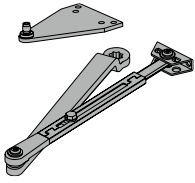


**Butt hinges** should not exceed 5" (127mm) in width.

**Top rail** less than 6" (152mm) measured from stop requires plate SC70A-18PA.

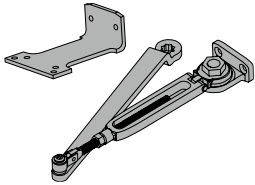
**Delayed action** add suffix "DEL" to selected cylinder (ex. SC70A DEL). Delays closing from maximum opening to approx. 70°, with adjustable delay time.

## Arm types All SC70A Series closers come with full cover, standard arm and screw pack.



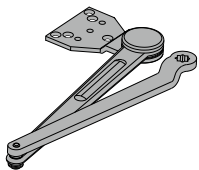
### Regular arm, SC70A-3077PA

Non-handed arm with adjustable forearm assembly to accommodate a range of doors and frame reveal conditions. Mounts hinge side, top jamb or parallel arm. PA shoe included to allow installation in a parallel arm configuration.



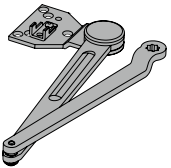
### Hold-open arm, SC70A-3049PA

Optional, non-handed, hold open arm with adjustable forearm assembly to accommodate a range of doors and frame reveal conditions. Mounts hinge side, top jamb or parallel arm. PA shoe included to allow installation in a parallel arm configuration.



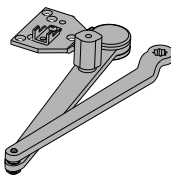
### Heavy duty regular arm, SC70A-3077HD

Optional, non-handed, stamped, heavy duty, parallel arm for use in high-traffic applications.



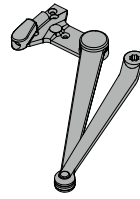
### Dead stop arm, SC70A-3077DS

Optional, non-handed, stamped, heavy duty, parallel arm includes a positive mechanical stop and non-adjustable forearm assembly for high volume traffic or potentially abusive installation conditions.



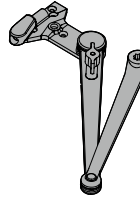
### Dead stop hold-open arm, SC70A-3049DS

Optional, non-handed, stamped, heavy duty, hold-open parallel arm includes a positive mechanical stop and non-adjustable forearm assembly for high volume traffic or potentially abusive installation conditions. Also includes a manually selective hold-open function.



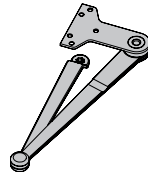
### Spring-n-stop arm, SC70A-3077SS

Optional, non-handed, extra heavy-duty, forged parallel arm includes an integral spring stop and non-adjustable forearm assembly for high volume traffic or potentially abusive installation conditions.



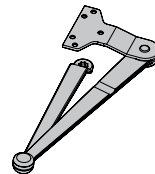
### Spring-n-stop hold-open arm, SC70A-3049SS

Optional, non-handed, extra heavy-duty, forged parallel arm includes an integral spring stop and non-adjustable forearm assembly for high volume traffic or potentially abusive installation conditions. Also includes a manually selective hold-open function.



### Forged arm, SC70A-3077FA

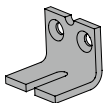
Optional, non-handed, extra heavy-duty arm with parallel arm bracket. Includes a forged steel main arm and forearm for maximum durability in high traffic and/or abusive applications. Parallel Arm (PA) bracket is a permanent feature, installation on "push" side of the door in a parallel arm type configuration is required.



### Forged arm with hold open, SC70A-3049FA

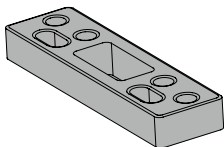
Optional, left or right handed, extra heavy-duty arm with parallel arm bracket that incorporates a hold open feature. Includes a forged steel main arm and forearm for maximum durability in high traffic and/or abusive applications. Parallel Arm (PA) bracket is a permanent feature, installation on "push" side of the door in a parallel arm type configuration is required.

## Installation accessories



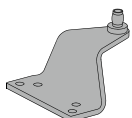
### Soffit shoe support, SC70A-30

Provides anchorage for fifth screw used with soffit shoe, where reveal is less than 3 1/16" (78mm).



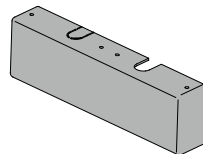
### Blade stop spacer, SC70A-61

Required to lower parallel arm shoe to clear 1/2" (13mm) blade stop.



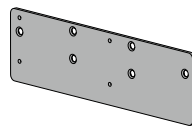
### Auxiliary shoe, SC70A-62A

Requires a top rail of 7" (178mm). Optional shoe replaces PA shoe for parallel arm mounting of regular arm with overhead holder/stop.



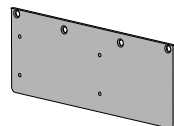
### Cover, SC70A-72

Standard, non-handed, full plastic cover encloses the closer body.



### Plate, SC70A-18

Required for hinge side mount where top rail is less than 3 7/8" (98mm). Required for top jamb mounting where head frame is less than 3 7/8" (98mm).



### Plate, SC70A-18PA

Required for parallel arm mounting where top rail is less than 6" (152 mm), measured from the stop. Plate requires 1 3/4" (44mm) minimum top rail measured from stop.