

ARCHITECTURAL ACCESS DOOR

Model(s): BNT

GENERAL DESCRIPTION



Access Doors are designed and built for years of convenient and easy access in commercial buildings.

GENERAL SAFETY PRECAUTIONS Improper selection, installation, or use can cause personal injury or property damage. It is solely the responsibility of the user, through its own analysis to select products suitable for their specific application requirements, ensure they are properly maintained, and limit their use to its intended purpose. Follow proper local, state and federal regulations for proper installation and operation requirements.

Introduction + Safety

Please read the complete instructions carefully before beginning any work. To ensure proper installation and performance of the product, the following actions must be completed by the installing contractor. Failure to do so will affect product warranty.

Transportation + Storage

- Inspect all shipments and materials for missing or damaged components and hardware.
- Material must be stored in a clean, dry location.

Preparation

- Locate the packing slip(s) and/or shop drawings.
- Verify that all products listed on the packing slip are included in the package.

- Check the products for damage. If products are damaged, report a freight claim immediately and leave the products in their packaging. If you sign for products without reporting damage, you waive your right to a freight claim and will be responsible for their replacement cost.
- Read the instructions thoroughly before beginning installation.

Tool List

- Screwdriver
- Keyhole Saw
- Fasteners
- Drill

Pre-Installation

1. Install a framed opening at specified location of access door. **Figure 1**
2. Rough Opening dimensions should be 1/4" larger than catalog size of door. Example: 12" x 12" door, rough opening should be 12-1/4" x 12-1/4".
3. Install drywall and cut opening for the Access panel. **Figure 2**



Figure 1

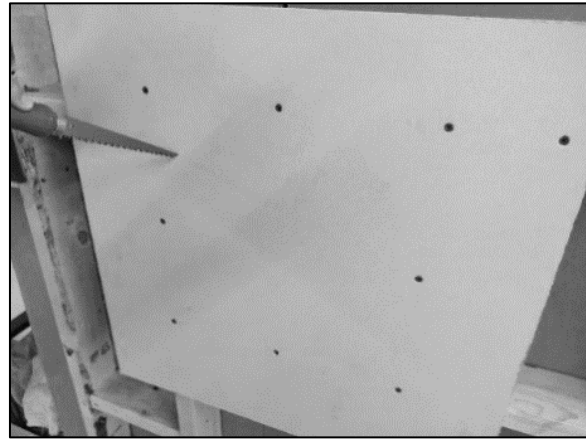


Figure 2

INSTALLATION

1. Place the access panel into the opening. Flange should seat firmly against wall or ceiling.
2. Square up access panel in opening and secure hinge side first. With the door in the open position, Install fasteners through easy tabs. **Figure 3**
3. Square up latch side and secure with fasteners through easy tabs. **Figure 4**
4. Secure remaining two sides by either:
 - Fasteners through easy tabs.
 - Folding easy tabs over if no framing is present. **Figure 5**



Figure 3

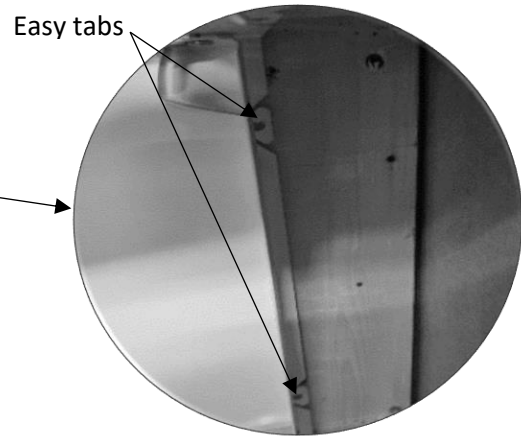


Figure 4

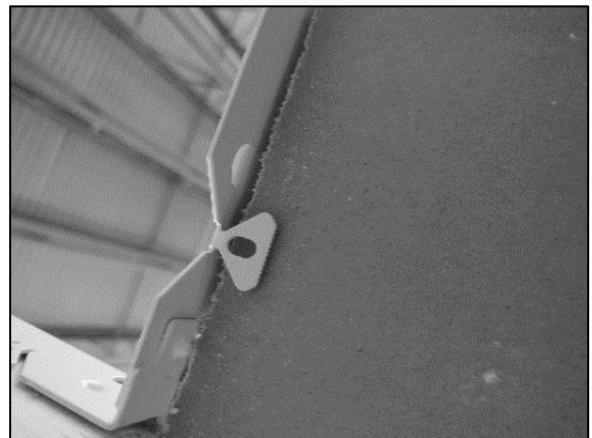


Figure 5

OPERATION

Access doors are designed and built for years of dependable wall and ceiling access. Our access doors come standard with a paintable powder coat finish.

The basic components for door operation include latching and locking mechanism and hinges:

Latch: Screwdriver operated cam latch is standard. Other latch options include:

- Key operated cam lock
- Mortise lock prep
- Hinge: Quickly and easily remove doors using the finger operated button snap hinges. **Figure 6**

Doors 36" x 36" and larger have a continuous piano hinge.



Figure 6

MAINTENANCE

- Access doors should be manually operated once a year to check performance.
- Lubricate moving parts such as hinges and latches with a silicone spray lube as required to maintain a smooth opening and closing of the door. Do not over grease. Do not use regular lubricating oil as it can attract dust and grit.
- Non-moving parts can be cleaned with a mild soap or dishwashing detergent and water solution.
- Gaskets can be cleaned with a clean, damp, lint-free cloth. Do not apply mineral oils, vinyl dressings, or other lubricants to the gasket as they can cause the gasket to break down over time.

QUESTIONS?

For more information on installation, repair, or replacement, please visit babcockdavis.com