



PLSL

STORM PRO™ Inverted Split Y Security Door Louver

PRODUCT CUT SHEET

| |
|---------------|
| PROJECT: |
| SUBMITTED BY: |
| DATE: |
| NOTES: |

For 1 3/8" to 1 3/4" Thick Doors

- ▶ 12 Ga. Cold Rolled Steel Security Grille Frame with 1 3/16" square holes on 1" centers
- ▶ 20 Ga. Cold Rolled Steel Louver Blades
- ▶ Countersunk Mounting Screw-Holes
- ▶ #8-32 Phillips Head Screw Thru-Bolts
- ▶ Available in Uneven and Fractional Sizes
- ▶ Free Area 50%
- ▶ Gray Primer (GPZ) Powder Coat Finish

Available Options

- ▶ Powder Coat Color Options - See Color Chart on ngp.com
- ▶ Aluminum Insect Screen - 22 Ga. 3/8" Square Mesh Installed on Exterior Side Unless Requested Otherwise
- ▶ #8-32 Torx Security Pin Screw Thru-Bolts
- ▶ Electrogalvanized Steel (Not Available on Security Grilles)
- ▶ Zinc Electroplating (Not Available on Insect Screen)
- ▶ Type 316 Stainless Steel - Specify PLSL-316SS, Available Sizes:

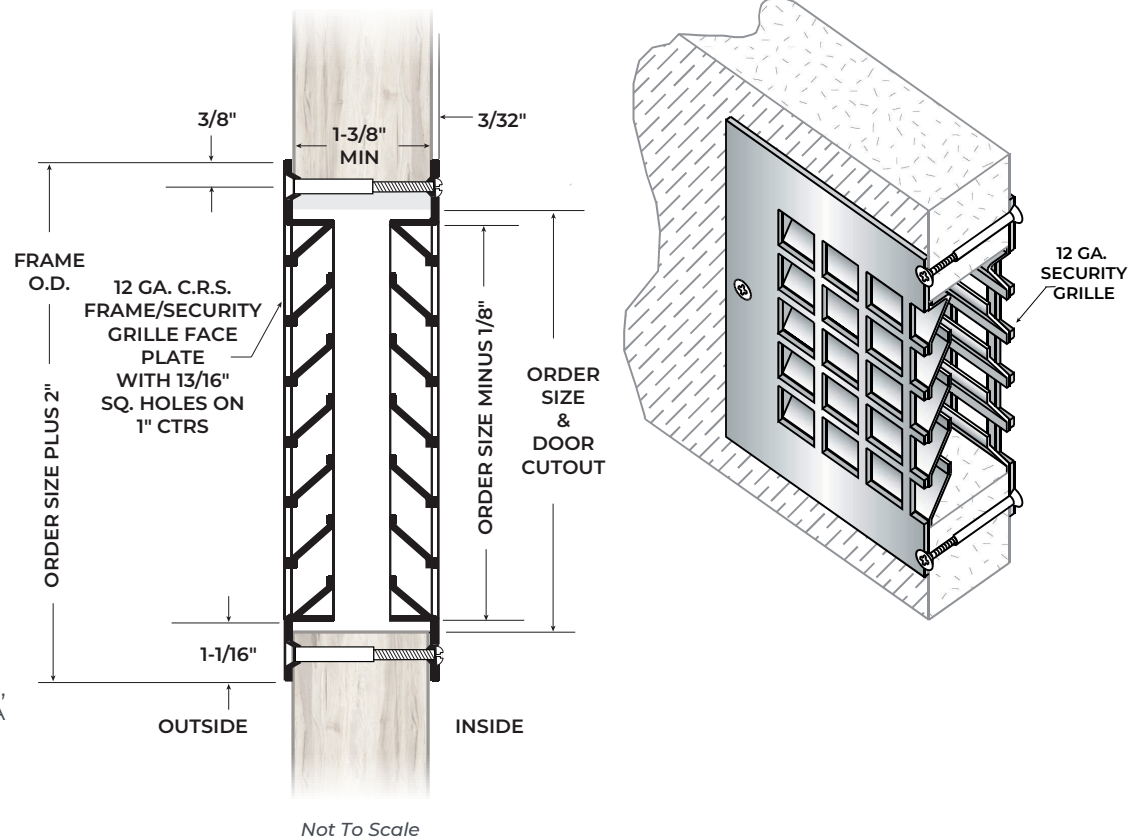
| | | |
|-----------|-----------|-----------|
| 12" x 12" | 18" x 12" | 24" x 12" |
| 12" x 18" | 18" x 18" | 24" x 18" |
| 12" x 24" | 18" x 24" | 24" x 24" |

 No Custom Sizes Available

Windstorm Rated

- ▶ Light Kit for Use in Windstorm-rated Assembly in accordance with ANSI/ASTM E330, ANSI/ASTM E1886, ASTM E1996, AAMA/WDMA/CSA 101/I.S.2/A440, FEMA 320, FEMA 361 and ICC 500.
Design Pressure = +/- 70 PSF
Large Missile Impact = 350 ft. lbs.
Hazard - Hurricane

This Product is **NOT** Rated for Use on Fire-Rated Doors



NATIONAL GUARD PRODUCTS, INC.

MEMPHIS

4985 East Raines Road
Memphis, TN 38118

CARSON CITY

3689 Arrowhead Drive
Carson City, NV 89706

Fax: (800) 255-7874
Email: info@ngp.com

Quotes: quotes@ngp.com
Orders: orders@ngp.com

ngp.com
1-800-NGP-RUSH

NGP-LIT-PLSL-PCS-0924-A