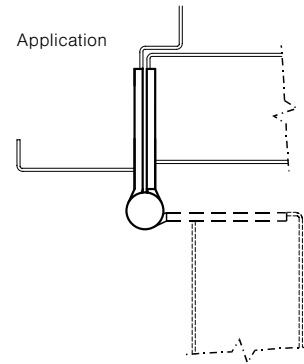


## MacPro® Five Knuckle Heavy Weight Series

The MacPro® line offers contractor grade hinges to get the job done right. High quality heavy weight hinges are an extraordinary value, ideal when you need large quantities of standard hinges.

- For doors with a closing device, bearing hinge must be used
- For heavy weight doors with a closing device, select a MPB68, heavy weight bearing hinge
- MacPro templated hinges are made to conform to ANSI/BHMA 156.1, 156.7
- For available finishes consult the factory

MPB99  
MPB68



No.	ANSI Cross Reference	Base Material	Weight	Bearing
MPB99	A5111	Stainless	HVY	Bearing
MPB68	A8111	Steel	HVY	Bearing

### Specifications

Inches	mm	Gauge	No. of Holes	Fasteners	
				Machine	Wood
4 1/2" x 4 1/2"	114.3 x 114.3	.180	8	1/2 x 12-24	1 1/4 x 12
5" x 4 1/2"	127 x 114.3	.190	8	1/2 x 12-24	1 1/4 x 12

### Options:

Code	Description
NRP	Non-Removable Pin

Approved for NFPA 80 fire rated openings

800-346-7707 | [www.mckinneyhinge.com](http://www.mckinneyhinge.com)  
Check the web site for the up-to-date catalog

McKinney is a brand associated with Corbin Russwin, Inc., an ASSA ABLOY Group company. Copyright © 2012-2017, Corbin Russwin, Inc. All rights reserved. Reproduction in whole or in part without the express written permission of Corbin Russwin, Inc. is prohibited.

**McKinney**  
**ASSA ABLOY**

Experience a safer  
and more open world