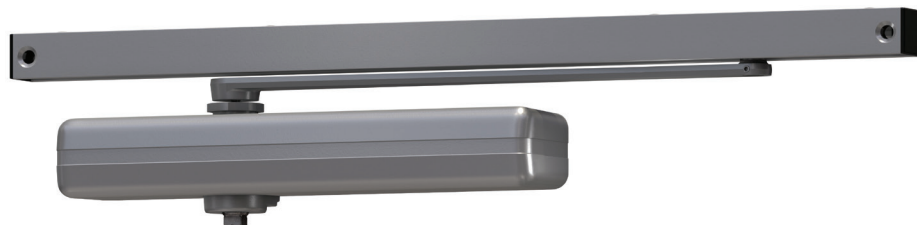


# 1460T Series



The 1460T is a fully universal slim line, single lever (track) arm closer designed for interior use on narrow head frames and top rails. The modern styling and small projection make it an excellent choice for interior doors.

## Features

<b>Certifications</b>	Grade 1 - ANSI A156.4, UL 10C, ADA, 100 hour salt spray, meets BAA - Buy American Act	<b>Cover</b>	<ul style="list-style-type: none"> <li>Slim line plastic cover, standard</li> <li>Full plastic or full metal designers series, optional</li> </ul>
<b>Body construction</b>	<ul style="list-style-type: none"> <li>Cast iron body</li> <li>Full complement bearing</li> <li>1 1/4" diameter piston</li> <li>5/8" diameter single heat treated pinion journal</li> </ul>	<b>Fasteners</b>	Self reaming and tapping screws (SRT)
<b>Fluid</b>	All weather fluid	<b>Mounting</b>	Hinge (pull side), top jamb (pull side), stop face (push side)
<b>Handing</b>	Non-handed	<b>Arms</b>	Single level with track roller
<b>Templating</b>	Peel-n-Stick templates - 1" x 7 1/2" mounting hole pattern	<b>Finishes/colors/powder coat</b>	<ul style="list-style-type: none"> <li>689 Aluminum</li> <li>690 Statuary Bronze</li> <li>691 Light Bronze</li> <li>693 Black</li> <li>695 Dark Bronze</li> <li>696 Brass</li> <li>Custom colors optional</li> </ul>
<b>Size</b>	<ul style="list-style-type: none"> <li>1460T adjustable size 2-4</li> <li>1461T adjustable size 1-2</li> </ul>		<ul style="list-style-type: none"> <li>Optional SRI primer - powder coat only</li> <li>Optional plated finishes</li> </ul>
<b>Warranty</b>	30 years		

### Special templates

Customized installation templates or products may be available to solve non-standard applications. Contact LCN Product Support for assistance.

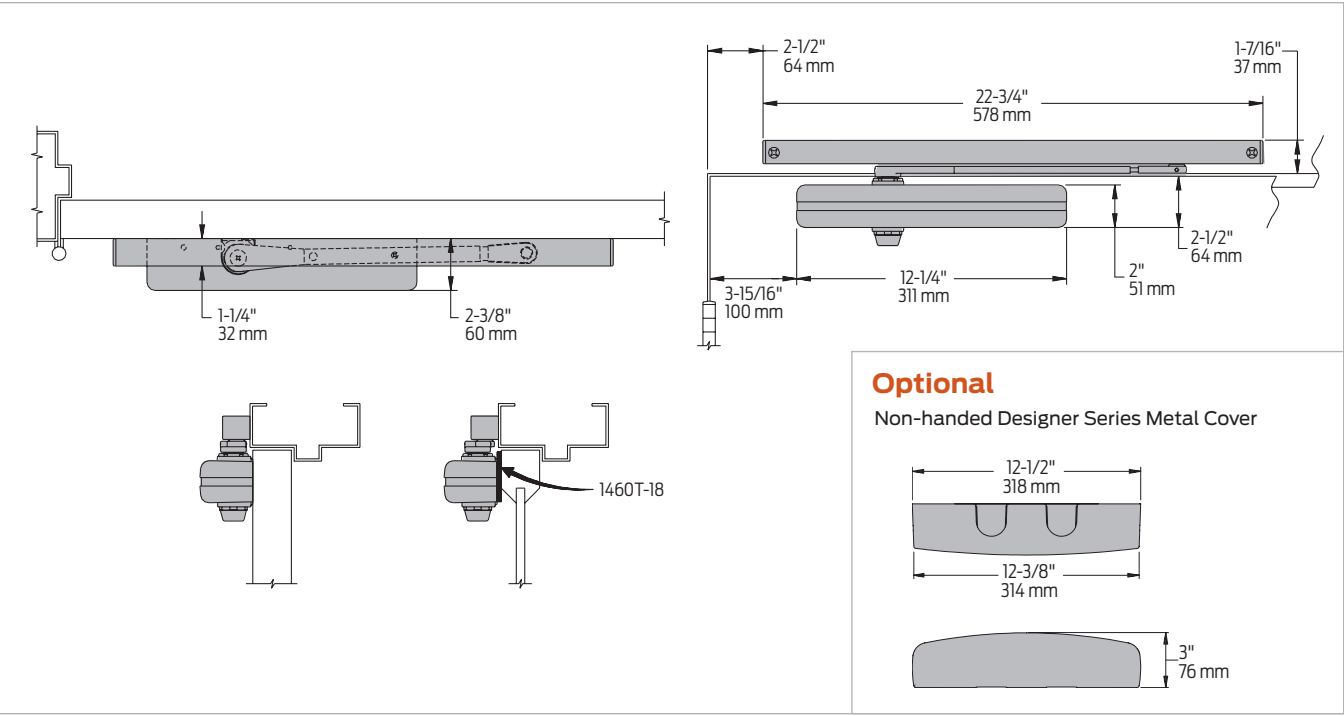
Mounting	Finish	Cover	Cylinder	Arm function*
Hinge (pull) side	Plastic	Designer series	Regular (double)	Hold Open
Top jamb (pull)	Metal	Non-handed	Standard (single)	EDAH/EDA
Top jamb (push)	Plastic	Non-sized	Heavy duty	CUSH/HCLUSH
Parallel arm	Plastic	Accessibility		SCUSH/SHCLUSH
Stop face	Plastic	Delay action	180°	
	Plastic		115°	
	Plastic			

- Available  
■ Not available

♿ Closer available with less than 5.0 lbs. opening force on 36" door.  
 \* Maximum opening/hold open point with standard template.  
 D For designer series only

Mounting details

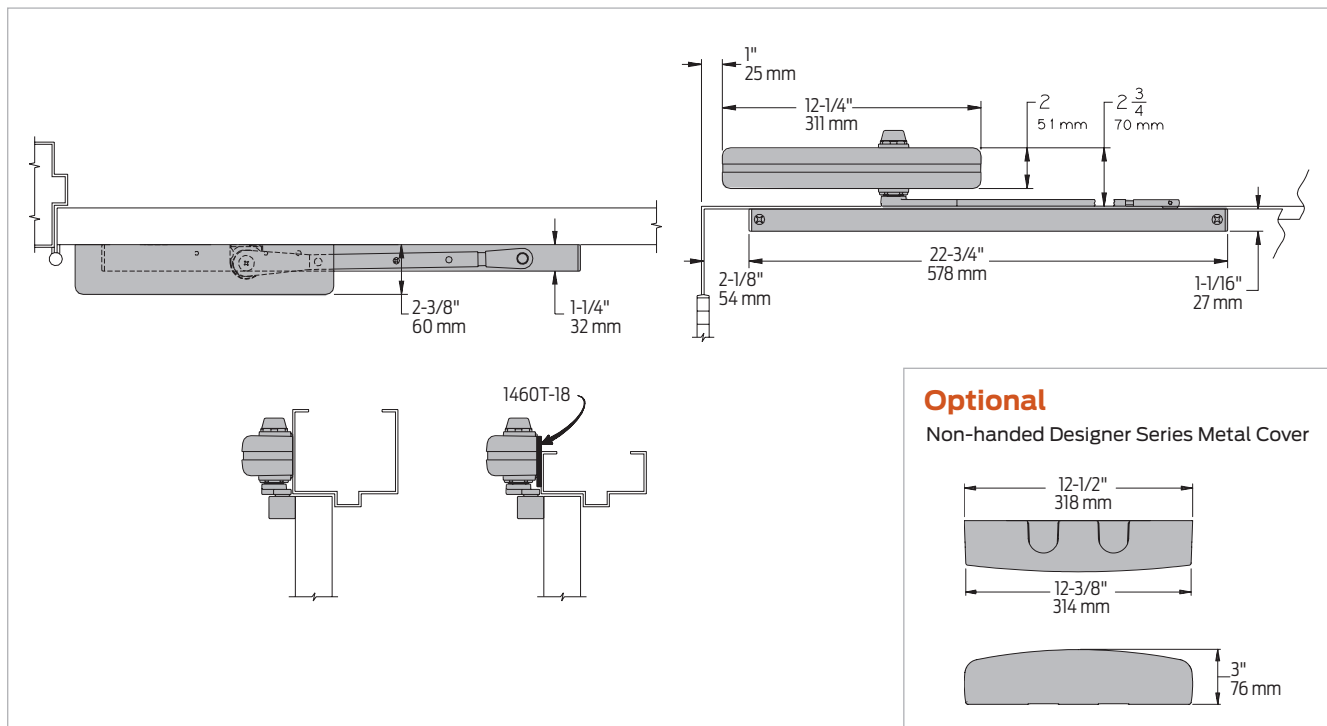
Hinge (pull side) mounting



Butt hinges	Should not exceed 5" (127 mm) in width
Auxiliary stop	<ul style="list-style-type: none"><li>Recommended where a door cannot swing 180°</li><li>Optional track bumper assembly assists backcheck in cushioning the opening swing of the door. It is not intended to replace an auxiliary stop</li></ul>
Reveal	Should not exceed 1/8" (3 mm)
Top rail	<ul style="list-style-type: none"><li>Less than 2 1/2" (64 mm) requires plate, 1460T-18</li><li>Plate requires 1 1/2" (38 mm) minimum</li><li>With Full Plastic Cover, use plate, 1460T-18FC</li><li>With Designer Series Metal Cover, use plate, 1460T-18DS</li></ul>
Clearance	2 3/8" (60 mm) behind door required for installation
Maximum opening	<ul style="list-style-type: none"><li>Templating allows up to 180°, trim and frame permitting, limited to 115° when optional bumper is installed</li><li>Hold open points at 85°, 90°, 95°, 100°, 110° or 115° with Hold Open Tracks</li><li>Please note that many track style door closers are capable of allowing 180° of door swing</li><li>Be aware that the majority of track style closers are at their weakest closing force in the 180°-130° range</li><li>Consult factory for applications where door must swing 180°</li></ul>

## Mounting details

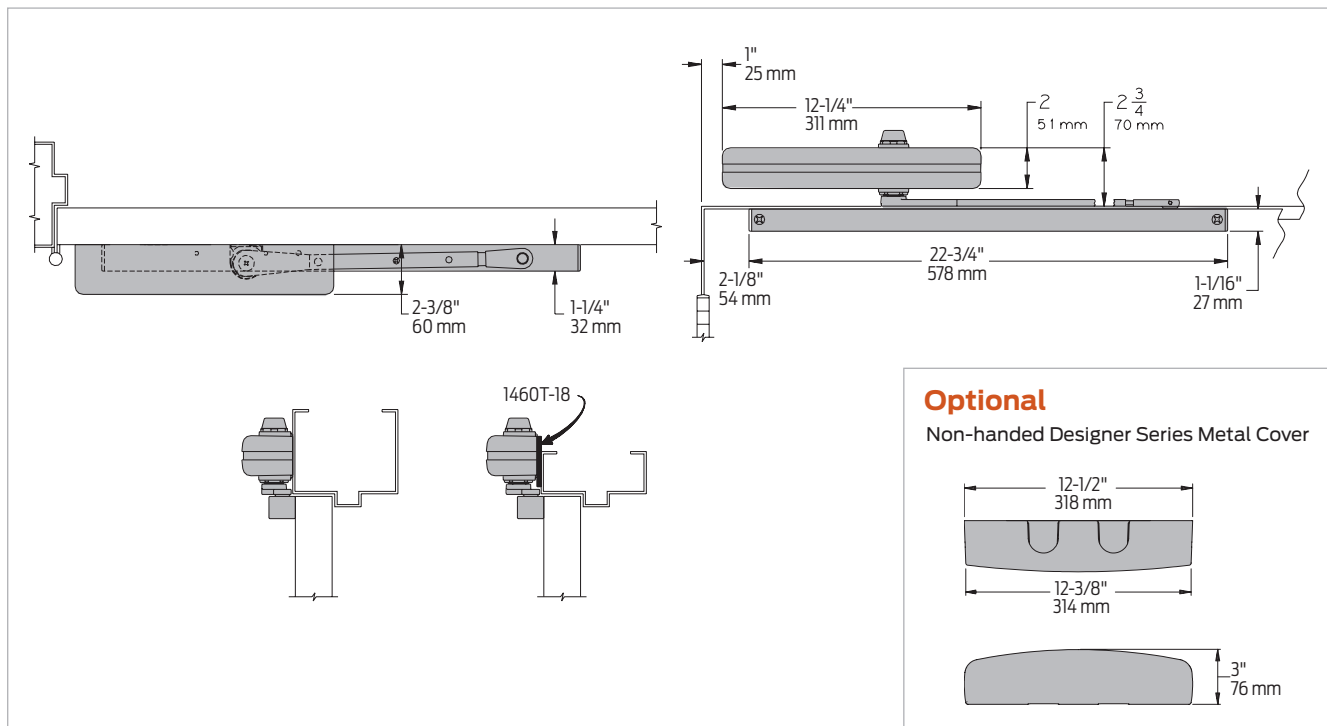
### Top jamb (pull side) mounting



Butt hinges	Should not exceed 5" (127 mm) in width
Auxiliary stop	<ul style="list-style-type: none"> <li>Recommended where a door cannot swing 180°</li> <li>Track bumper assembly assists backcheck in cushioning the opening swing of the door. It is not intended to replace an auxiliary stop</li> </ul>
Reveal	Should not exceed 1/8" (3 mm)
Top rail	Minimum 1 1/4" (32 mm)
Head frame	<ul style="list-style-type: none"> <li>Less than 2 3/4" (70 mm) requires plate, 1460T-18</li> <li>Plate requires 1 3/4" (44 mm) minimum</li> <li>With Full Plastic Cover, use plate, 1460T-18FC</li> <li>With Designer Series Metal Cover, use plate, 1460T-18DS</li> </ul>
Clearance	1 1/4" (32 mm) behind door for installations
Maximum opening	<ul style="list-style-type: none"> <li>Templating allows up to 180°, limited to 115° when optional bumper is installed</li> <li>Hold open ramp and roller design allows for variable angles</li> <li>Please note that many track style door closers are capable of allowing 180° of door swing</li> <li>Be aware that the majority of track style closers are at their weakest closing force in the 180° – 130° range</li> <li>Consult factory for applications where door must swing 180°</li> </ul>

## Mounting details

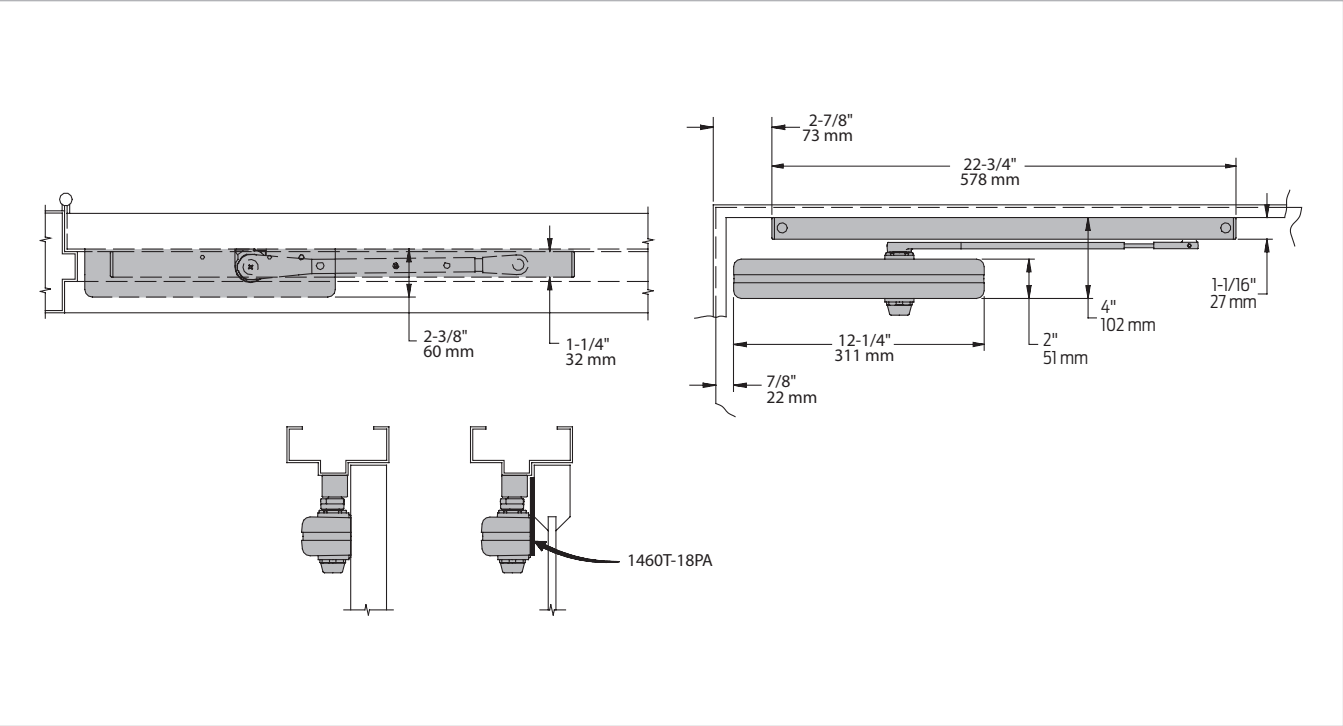
### Top jamb (pull side) mounting



Butt hinges	Should not exceed 5" (127 mm) in width
Auxiliary stop	<ul style="list-style-type: none"> <li>Recommended where a door cannot swing 180°</li> <li>Track bumper assembly assists backcheck in cushioning the opening swing of the door. It is not intended to replace an auxiliary stop</li> </ul>
Reveal	Should not exceed 1/8" (3 mm)
Top rail	Minimum 1 1/4" (32 mm)
Head frame	<ul style="list-style-type: none"> <li>Less than 2 3/4" (70 mm) requires plate, 1460T-18</li> <li>Plate requires 1 3/4" (44 mm) minimum</li> <li>With Full Plastic Cover, use plate, 1460T-18FC</li> <li>With Designer Series Metal Cover, use plate, 1460T-18DS</li> </ul>
Clearance	1 1/4" (32 mm) behind door for installations
Maximum opening	<ul style="list-style-type: none"> <li>Templating allows up to 180°, limited to 115° when optional bumper is installed</li> <li>Hold open ramp and roller design allows for variable angles</li> <li>Please note that many track style door closers are capable of allowing 180° of door swing</li> <li>Be aware that the majority of track style closers are at their weakest closing force in the 180° – 130° range</li> <li>Consult factory for applications where door must swing 180°</li> </ul>

Mounting details

Stop face (push side) mounting



Butt hinges	Should not exceed 5" (127 mm) in width
Auxiliary stop	<ul style="list-style-type: none"><li>Recommended where a door cannot swing 110°</li><li>Track bumper assembly assists backcheck in cushioning the opening swing of the door. It is not intended to replace an auxiliary stop</li></ul>
Top rail	<ul style="list-style-type: none"><li>Less than 4" (102 mm) measured from the stop face requires plate, 1460T-18PA. Plate requires 1 1/2" (38 mm) minimum</li><li>With Full Plastic Cover, use plate, 1460T-18PAFC</li><li>With Designer Series Metal Cover, use plate, 1460T-18PADS</li></ul>
Clearance	1460T projects 2 3/8" (60 mm) from door face
Stop width	Minimum 1 1/4" (32 mm)
Maximum opening	<ul style="list-style-type: none"><li>Templating allows 110°, limited to 100° when optional bumper is installed</li><li>Variable hold open angles with infinite options</li></ul>

## Accessories

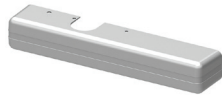
### Cylinders



**1460(1)T-3071  
Cast iron cylinder  
assembly (CYL)**

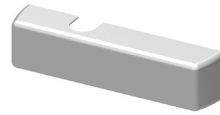
- Non-handed
- 1461T adjustable 1-2
- 1460T adjustable 2-4
- Standard

### Covers



**1460T-72  
Slim Line Plastic Cover  
(SLIMPC)**

- Non-handed
- Standard



**1460T-72FC  
Full Plastic Cover (FPC)**

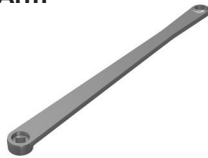
- Non-handed
- Optional



**1460T-72DS  
Designer Series Metal Cover (DS)**

- Non-handed
- Required for plating option and custom powder coat finishes
- Optional

### Arm



**1460T-3077T  
Single Arm (STDTRKARM)**

- Non-handed
- Mounts hinge side, top jamb, or stop face
- Track roller not included with arm

### Tracks



**1460T-3038  
Standard Track (STDTRK)**

- Non-handed
- Non hold open
- Mounts on either side of the door
- Will accept hold open clip and/or bumper assembly
- Standard



**1460T-3038B  
Track with Bumper (BUMP)**

- Non-handed
- Non hold open
- Mounts on either side of the door
- Will accept hold open clip
- Optional



**1460T-3038H  
Hold Open Track (H)**

- Non-handed
- Hold open
- Mounts on either side of the door
- Will accept bumper assembly
- Optional



**1460T-3038HB  
Hold Open Track with  
Bumper (HBMP)**

- Non-handed
- Hold open
- Mounts on either side of the door
- Optional

## Accessories

### Installation accessories



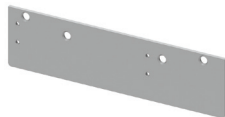
#### 1460T-18 Plate

- Required for hinge side mount where top rail is less than 2 1/2" (64 mm)
- Required for top jamb mount when head frame is less than 2 3/4" (70 mm)
- Requires minimum 1 1/2" (38 mm) top rail or 1 3/4" (44 mm) head frame minimum



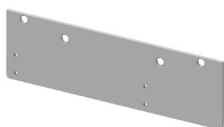
#### 1460T-18DS Plate

- Required for hinge side mount where top rail is less than 2 1/2" (64 mm)
- Required for top jamb mount when head frame is less than 2 3/4" (70 mm)
- Requires minimum 1 1/2" (38 mm) top rail or 1 3/4" (44 mm) head frame minimum
- For use with Designer Series Metal Cover



#### 1460T-18FC Plate

- Required for hinge side mount where top rail is less than 2 1/2" (64 mm)
- Required for top jamb mount when head frame is less than 2 3/4" (70 mm)
- Requires minimum 1 1/2" (38 mm) top rail or 1 3/4" (44 mm) head frame minimum
- For use with Full Cover



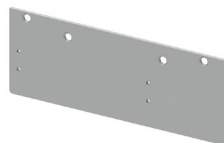
#### 1460T-18PA Plate

- Required for stop face mounting where top rail is less than 4" (102 mm), measured from the stop
- Requires 1 1/2" (38 mm) minimum top rail



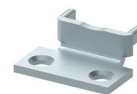
#### 1460T-18PADS Plate

- Required for stop face mounting where top rail is less than 4" (102 mm), measured from the stop
- Requires 1 1/2" (38 mm) minimum top rail
- For use with Designer Series Metal Cover



#### 1460T-18PAFC Plate

- Required for stop face mounting where top rail is less than 4" (102 mm), measured from the stop
- Requires 1 1/2" (38 mm) minimum top rail
- For use with Full Cover



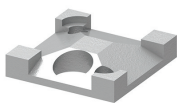
#### 1460T-30A Mounting bracket

- Used when installing cylinder body
- Included with cylinder when ordered



#### 1460T-169 Track bumper

- Mounts in track to assist backcheck, does not replace auxiliary stop
- Limits maximum opening
- Consists of bumper, bumper post, and mounting screw



#### 1460T-3054 Hold open clip

- Mounts in track to provide hold open function
- Hold open point controlled by clip location



#### 1460T-3034 Track roller

- Quiet, low friction roller assembly
- Shoulder dimension "X" = 1/8" (3 mm)



#### 1460T-3034H Hold open track roller

- Hold open roller
- Quiet, low friction roller assembly
- Shoulder dimension "X" = 1/8" (3 mm)
- Spring-loaded hold open mechanism

Ordering information

How-to-order 1460T Series closers

1. Select cylinder size

- ☐ 1461T (adjustable from size 1 to 2)
- ☐ 1460T (adjustable from size 2 to 4)

2. Select finish

- ☐ Standard powder coat \_\_\_\_\_  
Aluminum (689), Dark Bronze (695),  
Statuary Bronze (690), Light Bronze  
(691), Black (693), Brass (696).

Closer will be shipped with:

- Standard cover
- Standard arm
- Standard track
- Track roller
- Self reaming and tapping machine screws  
(unless options listed below are selected)

Closer options

Cover

- ☐ Full Plastic Cover (FPC)
- ☐ Designer Series Metal Cover (DS)

Finish

- ☐ Custom powder coat (RAL) \_\_\_\_\_  
(DS cover required)
- ☐ Plated finish, \_\_\_\_\_ (DS cover required)
- ☐ SRI primer (use with powder coat finishes only)

Track

- ☐ Track with Bumper (BUMP)
- ☐ Hold Open Track (H)
- ☐ Hold Open Track with Bumper (HBMP)

Optional screw packs

- ☐ Through Bolt<sup>1</sup> Self Reaming And Tapping  
Screws (TBSRT)

- ☐ Wood and Machine Screws (WMS)
- ☐ Through Bolt<sup>1</sup> Wood and Machine Screws (TBWMS)
- ☐ Torx Machine Screws (TORX)
- ☐ Through Bolt<sup>1</sup> and Torx Machine Screws (TBTRX)

Installation accessories

- ☐ Plate, 1460T-18
- ☐ Plate, 1460T-18DS1
- ☐ Plate, 1460T-18FC
- ☐ Plate, 1460T-18PA
- ☐ Plate, 1460T-18PADS1
- ☐ Plate, 1460T-18PAFC

Special template

- ☐ ST- \_\_\_\_\_

1. Specify door thickness if other than 1 3/4".

Table of sizes

- Select closer based on width of door. The spring power of a 1460T cylinder is adjustable from size 2 to size 4 and is shipped adjusted to size 3
- The closing power of 1460T series cylinders may be increased 50%
- The spring power of a 1461T cylinder is adjustable from size 1 to size 2 and is shipped adjusted to size 1

Interior door width



→ Indicates recommended range of door width for closer size.  
\*Adjustable Size 2 thru 4

Interior door width



→ Indicates recommended range of door width for closer size.  
\*Adjustable Size 1 thru 2

Reduced opening force 1460T Series closers

**CAUTION!** Any manual door closer, including those certified by BHMA to conform to ANSI Standard A156.4, that is selected, installed and adjusted based on ADA or other reduced opening force requirements may not provide sufficient power to reliably close and latch a door.

Refer to Automatic Operators catalog for information on systems that meet reduced opening force requirements without effecting closing power.

	Door width	36"	42"	48"
	8.5* lbs.	N/A	N/A	N/A
	5.0* lbs.	1461T	1461T	1461T

\* Maximum opening force.