

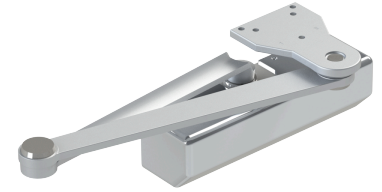


5300 Closer x Extra Heavy Duty Arm- 5911

5300 Closer x 5911 Extra Heavy Duty Arm

Applications

Grade 1 Heavy Duty Surface Door Closer adjustable sizes 1-6
Ideal for schools, hospitals, and other high-use environments



PRODUCT SPECIFICATIONS

Arm:

5911 - Extra Heavy Duty Arm

Arms & Brackets:

Tri-Pack - regular, top jamb, and parallel arms - Standard
15% power adjustment in standard arm for regular and top jamb mount

Box Quantity:

1

Case Quantity:

6

Certifications:

BHMA Certified ANSI A156.4, adjustable sizes 1-6
ADA compliant ANSI A117.1 Accessibility Code
UL/cUL Listed for up to 3 hours
UL10C Positive Pressure Rated
UL10B Neutral Pressure Rated
5200 Door Closer EPD

Cover:

Full plastic cover and pinion cap

Door Thickness:

1-3/4" (44 mm)- standard
1-3/8" - 2-1/4" (36 mm - 57 mm) - optional

Fasteners:

Self-reaming, self-tapping wood and machine screws
Sex nuts and bolts

Handing:

Non-handed

Material:

Forged steel arm

Maximum Door Weight:

250 lbs.

Notes:

To maximize hinge life and assist in achieving ADA compliance, Hager recommends the use of anti-friction or ball bearing hinges with our door closer products.

The recommended temperatures for prolonged closer use is between -40° F (-42° C) and 150° F (66° C)

Any certified BHMA/ANSI A156.4 door closer, regardless of manufacturer, that is installed and adjusted based on ADA or other reduced opening force requirements may not provide sufficient power to reliably close and latch a door

If arms are ordered separately, there will be a significant difference in price than if purchased with a closer as a complete assembly.

See adders for more information (add the list price of the option to the list price of the closer and take standard discounts).

Accessories may not be available in all finishes. Please contact Hager for availability and lead time.

Springs:

One piece seamless steel spring tube
Double heat-treated, steel-tempered springs
Precision-machined, heat-treated steel piston

Use:

Ideal for schools, hospitals, and other high-use environments

Valves:

Adjustable latching and sweep speed valves
Adjustable backcheck valve - standard
Delayed action valve - optional
Staked valves - standard

Warranty:

Lifetime warranty