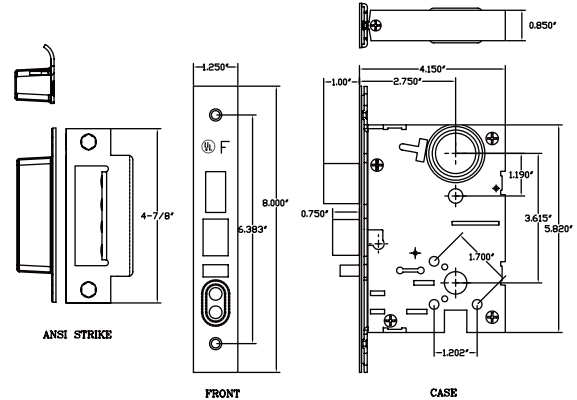


Heavy Duty Commercial Mortise Locks

FEATURES:

- Non-handed
- Stock 6-pin Schlage "C" keyway
- Door thickness 1-3/4" standard, other thicknesses available when specified
- Backset 2-3/4"
- Lock case Heavy-gauge plated steel
- Armored Front Wrought stainless steel or brass-adjustable angle and attached by screws to the lock case front
- Dead bolt 1" throw, stainless steel with hardened anti-saw pins
- Latchbolt Stainless steel latch and anti-friction insert
- Guard bolt Stainless steel
- Stop works Push buttons - chrome-plated brass
- Strike Stainless steel or brass, 4-7/8" x 1-1/4" curved lip ANSI strike
- Handing Handed, field-reversible
- UL Listings UL listed, 3-hour fire doors, single and pairs
- ANSI Specification Meets all Grade 1 security, operational, dimensional and cycling requirements of ANSI/BHMA A156.13 Series 1000, Lock body conforms to Federal Standard FF-H-106 Type 86/87



SPECIFICATIONS:

Mortise Locks – ML series

All locks or latches are provided with 3-hour listed stainless steel deadlatch or springlatch. Lock chassis shall be stainless steel, steel bar and cold rolled steel case with ball-bearing roller retractors.

OPTIONS:

- Trim: 03, 06, 17, specify "A" for sectional trim
- Finish: Escutcheon in 26D, 10B
Sectional in 26D, 10B, 26

Item	Style	26D	10B	US26
CML901003A	03 Lever, Sectional			•
CML904003A	03 Lever, Sectional			•
CML905003A	03 Lever, Sectional			•
CML907003A	03 Lever, Sectional			•
CML908003A	03 Lever, Sectional			•
CML945303A	03 Lever, Sectional			•
CML901006A	06 Lever, Sectional	•	•	•
CML904006A	06 Lever, Sectional	•	•	•
CML905006A	06 Lever, Sectional	•	•	•
CML907006A	06 Lever, Sectional	•	•	•
CML908006A	06 Lever, Sectional	•	•	•
CML945306A	06 Lever, Sectional	•	•	•



CODE COMPLIANCE:

- ANSI A156.13 Series 1000 Grade 1
- Listed UL10C and UBC 7.2 for positive pressure
- ANSI A117.1 ADA Barrier-free Accessibility
- C-UBC California Uniform Builders Code - 2001
- NFPA-80 National Fire Protection - 1999
- NFPA-101 National Fire Protection-Life Safety - 2000

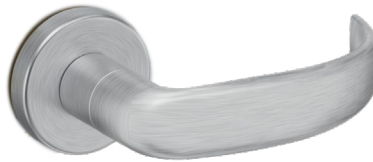
LIMITED LIFETIME WARRANTY

Item	Style	26D	10B	US26
CML901017A	17 Lever, Sectional	•	•	•
CML904017A	17 Lever, Sectional	•	•	•
CML905017A	17 Lever, Sectional	•	•	•
CML907017A	17 Lever, Sectional	•	•	•
CML908017A	17 Lever, Sectional	•	•	•
CML945317A	17 Lever, Sectional	•	•	•
CML901006L	06 Lever, Escutcheon	•		•
CML904006L	06 Lever, Escutcheon	•		•
CML905006L	06 Lever, Escutcheon	•		•
CML907006L	06 Lever, Escutcheon	•		•
CML908006L	06 Lever, Escutcheon	•		•
CML945306L	06 Lever, Escutcheon	•		•

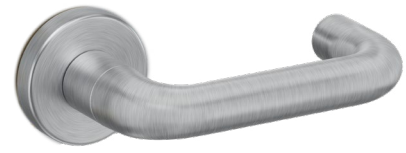
Heavy Duty Commercial Mortise Locks



06

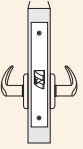
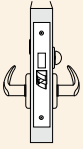
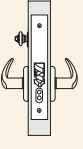
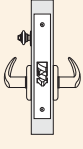
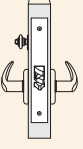
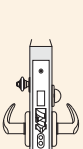


17



03

For Sectional trim specify "A"

PICTURE	SERIES	FUNCTION	ANSI NUMBER	FUNCTION DESCRIPTION
	CML9010	Passage or Closet	F01	Latchbolt operated by lever from either side at all times.
	CML9040	Privacy or Bathroom	F19	Latchbolt operated by lever from either side. Dead bolt operated by turn from inside and emergency release from outside. Operating inside lever retracts both bolts.
	CML9050	Entry/ Office	F04	Latchbolt operated by lever from either side, except when outside lever is made inoperative by a stop or mechanical means other than key. When outside lever is locked, Latchbolt is retracted by key from outside or by operating inside lever. ***Auxiliary dead bolt latch.
	CML9070	Classroom	F05	Latchbolt operated by lever from either side, except when outside lever is locked from outside by key or push button mechanism. When outside lever is locked, latchbolt may be retracted by key, or by operating key or push button mechanism and outside lever from outside or by operating inside lever. ***Auxiliary dead bolt latch.
	CML9080	Storeroom or Closet	F07	Latchbolt operated by key from outside or by rotating inside lever. Outside lever is always inoperative. ***Auxiliary dead bolt latch.
	CML9453	Entrance/ Apartment/ Dormitory	F20	Latch bolt retracted by lever from either side, except when outside lever is made inoperative by operating the toggle button. Dead bolt projected by key from outside and by thumb turn from inside. Key outside operates both bolts and outside lever remains locked. Operating inside lever retracts both bolts and outside lever remains locked. Latch bolt is deadlocked when outside lever is made inoperative or when dead bolt is projected. When dead bolt is retracted, outside lever is unlocked by toggling the button. Inside lever is always free for immediate exit.