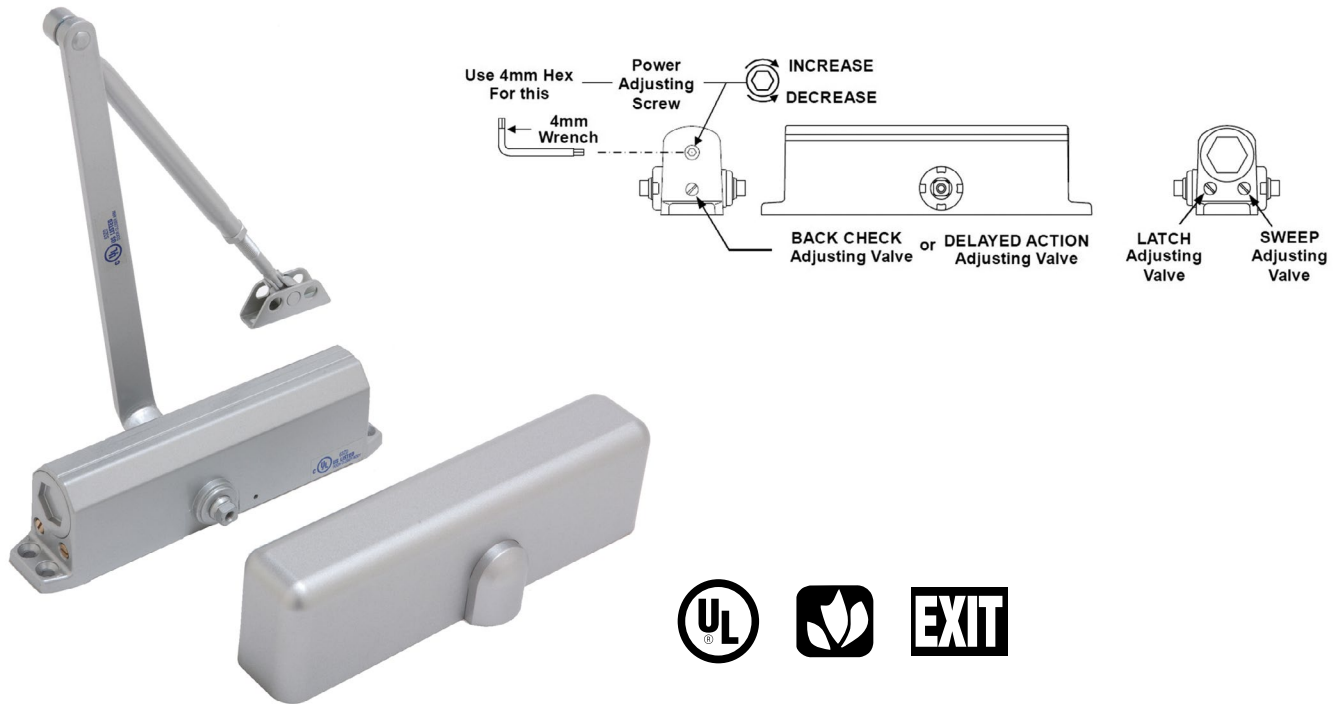


# Standard Duty Commercial Door Closer

DC50



## FEATURES:

- 50 series fits Norton 1600 series hole pattern and mounting location
- Tri-pack with regular, parallel and top-jamb mounting instructions and full-size template
- Standard closer spring sized to 3, 4 with NO adjustment
- Non-handed
- Standard with adjustable sweep, latch
- Slim line plastic cover
- SNB - Sex nuts
- 10 closers per shipping carton

## OPTIONS:

- BC: Backcheck adjustment valve

## CODE COMPLIANCE:

- ANSI A156.4 Grade 2. UL10C and UBC 7.2 for positive pressure
- C-UBC California Amended Uniform Builders Code - 2001
- California State Fire Marshall (CSFM) approved
- NOTE: may need to consider other closer if barrier-free required. Please discuss with sales associate.

## 10 YEAR LIMITED WARRANTY

Item	AL	DU
DC53	•	•
DC54		•
DC54BC	•	