

DEXTER[®]
COMMERCIAL HARDWARE

Full line catalog

Locks, closers and exits



Secure, exit, and close the door with Dexter commercial hardware.

Allegion's Dexter Commercial Hardware provides you with over 300 SKUs for locks, exits and closers to fulfill most opening price point project needs. Choose from Grade 1 and Grade 2 products below available in multiple functions, finishes, trim styles, and cylinder types, all backed by a 5-year Limited Mechanical Warranty.

Cylindrical locks and deadbolts

C1000 Series
Grade 1 cylindrical lock



C2000 Series
Grade 2 cylindrical lock



DB1000 Series
Grade 1 deadbolt

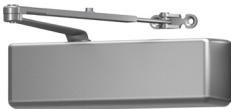


DB2000 Series
Grade 2 deadbolt
(includes drive-in deadbolt SKUs)

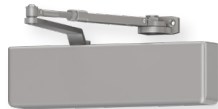


Surface closers

DCH4000 Series
Heavy duty cast iron closer



DCH1000 Series
Heavy duty cast aluminum closer



DCM1000 Series
Medium duty cast aluminum closer



DCL2000 Series
Light duty cast aluminum closer



DCR8000 Series
Residential duty aluminum closer



Exit devices and trim

ED1000 Series
Grade 1 wide stile rim and surface
vertical rod exits device



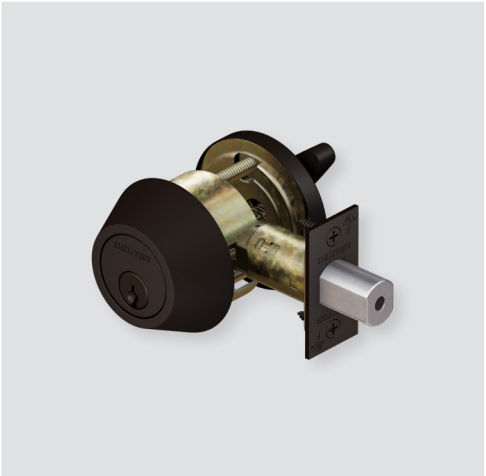
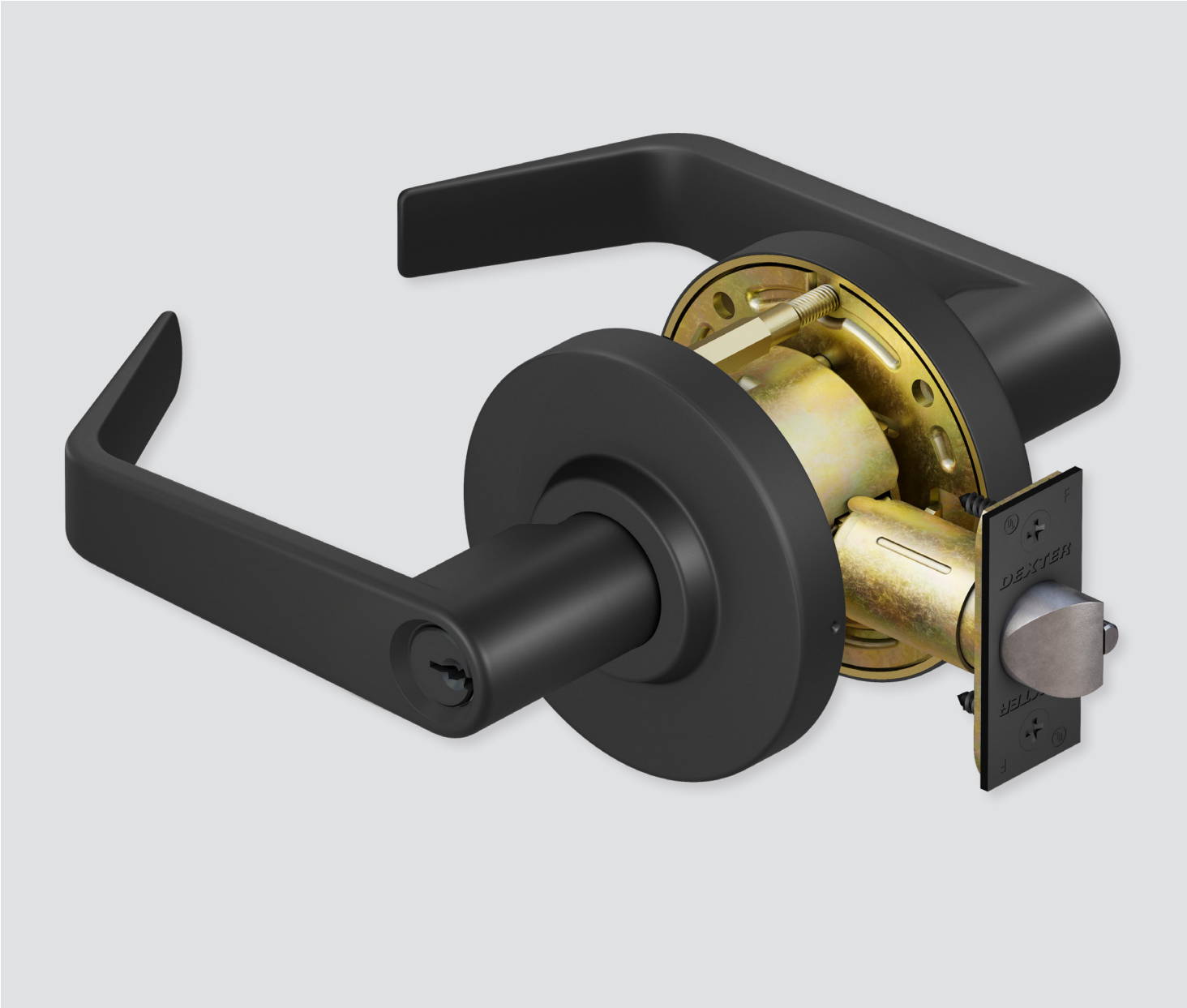
ED15000 Series
Grade 1 narrow stile rim and surface
vertical rod exit device



ED1500-V Series
Vertical rod

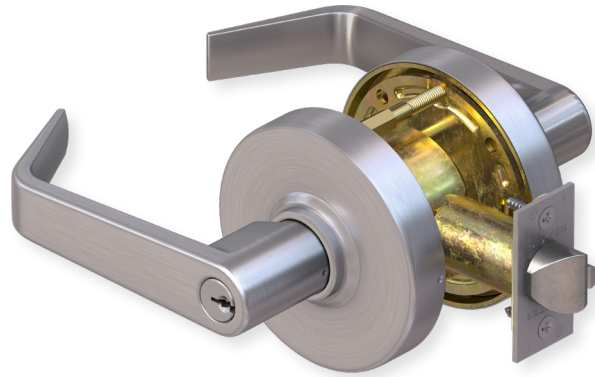


Cylindrical locks and deadbolts



C1000 Series

Grade 1 cylindrical locks



Specifications

- Grade 1, UL listed 3-hour
- 1 3/8" to 2" door range standard
- All functions include 1 1/8" x 2 1/4" square-corner beveled latch with 2 3/4" backset and ANSI 1 1/4" x 4 7/8" curved lip strike
- Accommodates Schlage conventional 6-pin (keyed 6) cylinders in Schlage C keyway, keyed different
- Accommodates SFIC to accept 6-pin/7-pin

How to order

Product number		Trim		Keying	
1 Series	2 Function	3 Design	4 Finish	5 Cylinder	
C1000	- PASS	- C	626	-	
C1000	- CLRM	- R	613	-	SFIC

Grade 1 cylindrical locks		Trim		Keying	
Series	Function and lever features	Designs	Finishes	Cylinders	
C1000	PASS	F75 Passage (non-clutching)	R = Regular C = Curved	613	N/A
	PRIV	F76 Privacy (non-clutching)		626 622 ¹	
	ENTR	F109 Entry/office (clutching)	R = Regular C = Curved	613 626 622 ¹	KDC = Conventional 6-pin, Schlage C, KD SFIC = Less SFIC
	NC-ENTR	F109 Entry/office (non-clutching)			
	CLRM	F84 Classroom (clutching)			
	CSEC	F88 Classroom security (clutching)			
	STRM	F86 Storeroom (clutching)	R = Regular C = Curved	626	KDC = 6-pin, Schlage C
	NC-STRM	F86 Storeroom (non-clutching)			
	ASYL	F87 Asylum (clutching)			

1. 622 finish not available with the Curved lever design or functions NC-STRM, NC-ENTR, and ASYL functions. See the Dexter Pricebook for specific configurations.

Designs



Regular lever

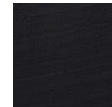


Curved lever

Finishes



613



622¹



626

C1000 Series
Grade 1 cylindrical locks

Accessories

Latches: All latches are square corner with 1 1/8" x 2 1/4" faceplate. Grade 1 latches are square corner with 2 3/8" and 2 3/4" backsets available. Products with "234" in the description represent a 2 3/4" backset.

Product description	Function	Backset	Latch type	Finish
C1000-SL-630	Passage, privacy	2 3/8"	Springlatch	630
C1000-SL-234-630	Passage, privacy	2 3/4"	Springlatch	630
C1000-DL-630	Entry/office, classroom, classroom security, storeroom	2 3/8"	Deadlatch	630
C1000-DL-234-630	Entry/office, classroom, classroom security, storeroom	2 3/4"	Deadlatch	630

Strikes: Radius corner, full lip strike. 1 3/4" x 2 1/4".

Product description	Function	Finish
C1000-RCFLS-626	Radius corner, full lip strike	630

C2000 Series

Grade 2 cylindrical locks



Specifications

- Grade 2, UL listed 3 hour
- 1 3/8" to 1 3/4" door range standard
- Brass (605) ball knobs come packaged with square-corner beveled latch with 2 3/8" backset and ANSI 1 1/4" x 2 1/4" T-Strike standard.
- All other functions (except dummy) include 1 1/8" x 2 1/4" square-corner beveled latch with 2 3/4" backset and ANSI 1 1/4" x 4 7/8" curved lip strike (30-148)
- Accommodates Schlage conventional 6-pin (keyed 6) in Schlage C keyway, keyed different and SFIC cylinders

How to order

Product number			Trim		Keying	
1	2	3	4	5		
Series	Function	Design	Finish	Cylinder		
C1000	- PASS	- C	- 626	-		
C1000	- CL-CLRM	- R	- 605	- SFIC		

Grade 2 cylindrical locks		Trim		Keying	
Series	Function and lever features	Designs	Finishes	Cylinders	
	PASS	F75 Passage (non-clutching)	R = Regular	605 ¹	N/A
	PRIV	F76 Privacy (non-clutching)	C = Curved	613	
	SDUM	Single dummy (non-clutching)	B = ball (knob)	626/630 ² 622 ³	
C2000	CL-ENTR	F109 Entry/office (clutching)	R = Regular C = Curved B = ball (knob)	605 ¹	KDC = Conventional 6-pin, Schlage C, KD SFIC = Less SFIC
	ENTR	F109 Entry/office (non-clutching)		613	
	CL-CLRM	F84 Classroom (clutching)		626/630 ²	
	CLRM	F84 Classroom (non-clutching)		622 ³	
	CL-STRM	Storeroom (clutching)			
	STRM	Storeroom (non-clutching)			

1. 605 finish not available on Curved lever design.

2. Use 626 finish when ordering lever designs and 630 finish for Ball design.

3. 622 not available with Curved lever design, Ball knobs, or SDUM and CL-CLRM functions. See the Dexter Pricebook for specific configurations.

Designs



Regular lever



Curved lever



Ball knob

Finishes



605¹

613

622³



630²

626²

C2000 Series
Grade 2 cylindrical locks

Accessories

Latches: All latches are square corner with 1 1/8" x 2 1/4" faceplate. Grade 2 latches are square corner with 2 3/8" and 2 3/4" backsets available. Products with "234" in the description represent a 2 3/4" backset.

Product description	Function	Backset	Latch type	Finish
C2000-SL-622	Passage, privacy	2 3/8"	Springlatch	622
C2000-SL-630	Passage, privacy	2 3/8"	Springlatch	630
C2000-SL-234-622	Passage, privacy	2 3/4"	Springlatch	622
C2000-SL-234-630	Passage, privacy	2 3/4"	Springlatch	630
C2000-SL-613	Passage, privacy	2 3/8"	Springlatch	613
C2000-SL-605	Passage, privacy	2 3/8"	Springlatch	605
C2000-SL-234-605	Passage, privacy	2 3/4"	Springlatch	605
C2000-DL-622	Entry/office, classroom, storeroom	2 3/8"	Deadlatch	622
C2000-DL-630	Entry/office, classroom, storeroom	2 3/8"	Deadlatch	630
C2000-DL-234-622	Entry/office, classroom, storeroom	2 3/4"	Deadlatch	622
C2000-DL-234-630	Entry/office, classroom, storeroom	2 3/4"	Deadlatch	630
C2000-DL-613	Entry/office, classroom, storeroom	2 3/8"	Deadlatch	613
C2000-DL-605	Entry/office, classroom, storeroom	2 3/8"	Deadlatch	605
C2000-DL-234-605	Entry/office, classroom, storeroom	2 3/4"	Deadlatch	605

Strikes:

Product description	Function	Finish
C2000-RCFLS-630	Radius corner, full lip strike, 1 5/8" x 2 1/4"	630
C2000-RCFLS-622	Radius corner, full lip strike, 1 5/8" x 2 1/4"	622
C2000-RCFLS-613	Radius corner, full lip strike, 1 5/8" x 2 1/4"	613
C2000-RCFLS-605	Radius corner, full lip strike, 1 5/8" x 2 1/4"	605
C2000-ACLS-605	ANSI, curved lip strike, 1 1/4" x 4 7/8"	605
C2000-TS-605	T-strike, 1 1/4" x 2 3/4"	605

Tailpieces:

Product description	Function	Finish	Cylinder
C2000-TP-SFIC	SFIC 6- and 7-pin with shielding spacer	N/A	N/A

DB1000 Series

Grade 1 deadbolts



Specifications

- Grade 1, UL listed 3-hour
- 1 3/8" - 1 7/8" Conventional cylinder door range; 1 5/8" - 2" SFIC door range
- All functions include 2 3/8" - 2 3/4" universal square corner latch (30-253) and 1 1/8" x 2 3/4" square corner lipless strike
- Accommodates Schlage conventional 6-pin (keyed 6) in Schlage C keyway, keyed different and SFIC cylinders

How to order

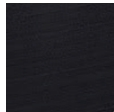
Product number		Trim	Keying
1	2	3	4
Series	Function	Finish	Cylinder
DB1000	- SCT	- 626	- SFIC

Grade 1 deadbolts		Trim	Keying
Series	Functions	Finishes	Cylinders
DB1000	SCT	Single cylinder x thumbturn	613 626 622
	DCT	Double cylinder	

Finishes



613



622



626

DB2000 Series

Grade 2 deadbolts



Specifications

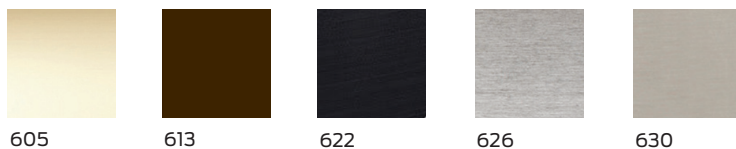
- Grade 2
- 1 ³/₈" – 1 ³/₄" Conventional cylinder door range; 1 ⁵/₈" - 2" SFIC door range
- All functions include 2 ³/₈" - 2 ³/₄" universal square corner latch (30-253) and 1 ¹/₈" x 2 ³/₄" square corner lipless strike
- Accommodates Schlage conventional 6-pin (keyed 6) in Schlage C keyway, keyed different and SFIC cylinders

How to order

Product number		Trim	Keying
1	2	3	4
Series	Function	Finish	Cylinder
DB2000	-	605	KDC

Grade 2 deadbolts		Trim	Keying
Series	Functions	Finishes	Cylinders
DB2000	SCT	605	KDC = Conventional 6-pin, Schlage C, KD SFIC = Less SFIC
		613	
	DCT	626	
		630	
	Single cylinder x thumbturn		
	Double cylinder		

Finishes



Accessories

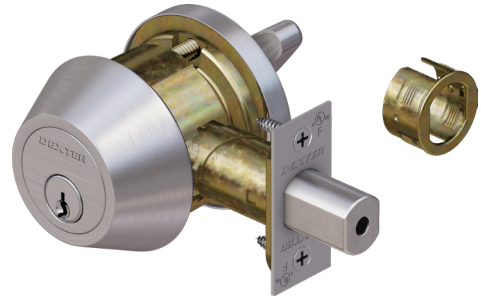
Tailpieces

Product description	Function	Finish	Cylinder
DB2000-TP-SFIC	SFIC Tailpiece kit including fork for G2 DB	N/A	N/A
DB2000-TP	SFIC Tailpiece for G2 DB	N/A	N/A

DB2000 Series

Grade 2 drive-in deadbolts

Dexter grade 2 DB2000 Series drive-in deadbolt provides “one-box” flexibility on the job, featuring an adjustable universal latchbolt backset length and both drive-in style collar for metal door applications and square corner faceplate for wood doors.



Specifications

- Grade 2
- 1 3/8" – 1 3/4" Conventional cylinder door range;
1 5/8" - 2" SFIC door range
- 4WB (4-way bolt) function includes square corner faceplate and drive-in style collar is installed out of box
- DB2000 Series offers latch-drive in conversion Kits (DB2000-4WB-KIT) which contains an adjustable latch with both square corner faceplate and drive-in style collar in the box. For use with DB2000 Series only.
- Accommodates Schlage conventional 6-pin (keyed 6) in Schlage C keyway, keyed different

How to order

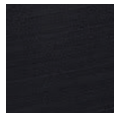
Product number		Trim	Keying
1	2	3	4
Series	Function	Finish	Cylinder
DB2000	-	626	KDC

Drive-in deadbolts			Trim	Keying
Series	Function and lever features		Finishes	Cylinders
DB2000	4WB-SCT	Single cylinder x thumbturn drive-in	613 622 626	KDC = Conventional 6-pin, Schlage C, KD

Finishes



613



622



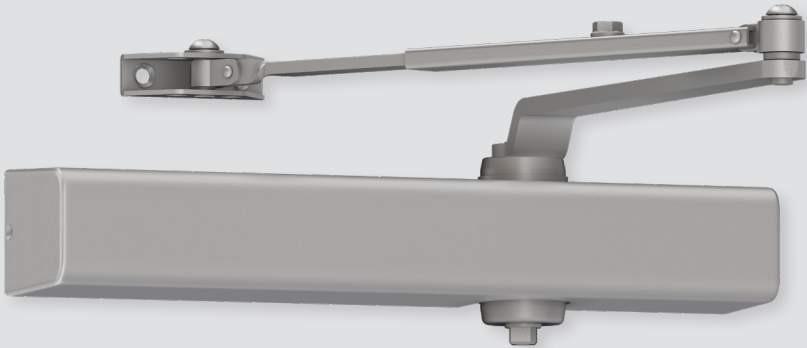
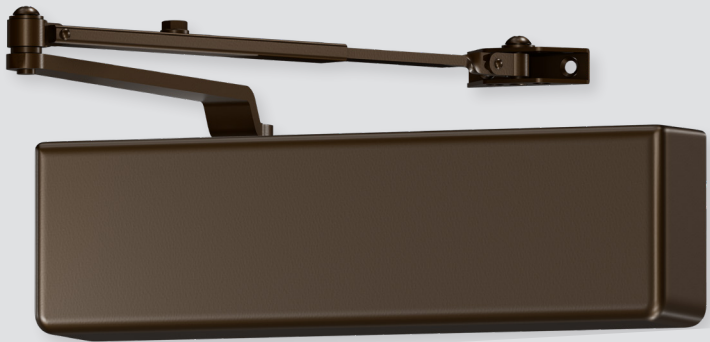
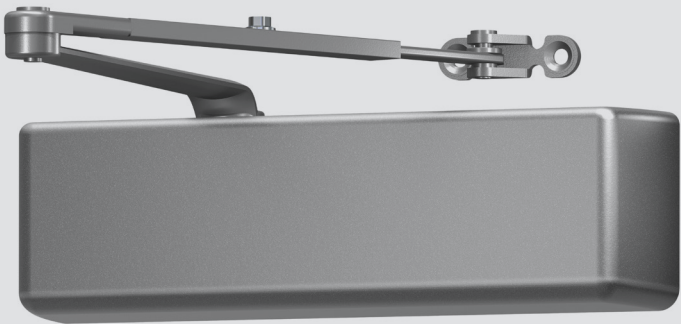
626

Accessories

Grade 2 drive-in conversion kits

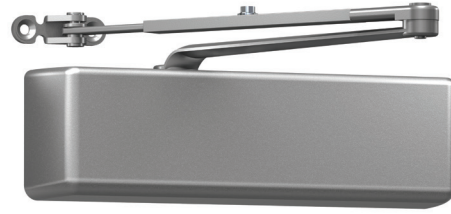
Product description	Function	Finish	Cylinder
DB2000-4WB-KIT-626	Drive-in replacement latch	626	N/A
DB2000-4WB-KIT-613	Drive-in replacement latch	613	N/A
DB2000-4WB-KIT-622	Drive-in replacement latch	622	N/A

Surface door closers



DCH4000 Series

Heavy duty surface door closers



Specifications

- Grade 1, UL / UL 10C listed (non-hold open arms), ADA compliant at size 1
- Adjustable spring size 1-6
- 5" x 2 1/4" mounting hole pattern
- Staked, independent adjustment values: sweep speed, latch speed and back-check
- Single piece, cast iron body
- Universal hardware pack

Closers

Product description	Cylinder type	Cover	Arm function	Finish
DCH4000-STD-FULL-RW/PA-689	STD	Full	Rw/PA	689
DCH4000-STD-FULL-RW/PA-695	STD	Full	Rw/PA	695
DCH4000-STD-FULL-RW/PA-622	STD	Full	Rw/PA	622
DCH4000-STD-FULL-HW/PA-689	STD	Full	Hw/PA	689
DCH4000-STD-FULL-HW/PA-695	STD	Full	Hw/PA	695
DCH4000-STD-FULL-DS-689	STD	Full	DS	689
DCH4000-STD-FULL-DS-695	STD	Full	DS	695
DCH4000-STD-FULL-DS/HO-689	STD	Full	DS/HO	689
DCH4000-STD-FULL-DS/HO-DKBRZ	STD	Full	DS/HO	695

Arm types

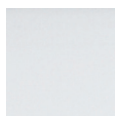
Regular arm (Rw/PA): Non-handed, regular arm with adjustable forearm assembly to accommodate a range of doors and frame reveal conditions. Mounts hinge side, top jamb or parallel arm. PA shoe included to allow installation in a parallel arm configuration.

Hold-open arm (Hw/PA): Non-handed, hold open arm with adjustable forearm assembly to accommodate a range of doors and frame reveal conditions. Mounts hinge side, top jamb or parallel arm. PA shoe included to allow installation in a parallel arm configuration.

Dead stop arm (DS): Non-handed, stamped, heavy duty, parallel arm includes a positive mechanical stop and non-adjustable forearm assembly for high volume traffic or potentially abusive installation conditions.

Dead stop hold-open arm (DS/HO): Non-handed, stamped, heavy duty, hold-open parallel arm includes a positive mechanical stop and non-adjustable forearm assembly for high volume traffic or potentially abusive installation conditions. Also includes a manually selective hold open function.

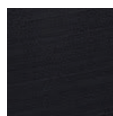
Finishes



ALUM/689



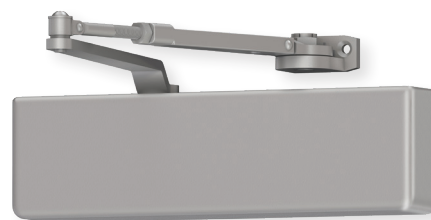
DKBRZ/695



MTBK/622

DCH1000 Series

Heavy duty surface door closers



Specifications

- Grade 1, UL / UL 10C listed (non-hold open arms), ADA compliant at size 1
- Adjustable spring size 1-6
- 6 ³/₄" x 2 ³/₈" mounting hole pattern
- Staked, independent adjustment values: sweep speed, latch speed, and back-check
- Single piece, cast aluminum body
- Universal hardware pack

Closers

Product description	Cylinder type	Cover	Arm function	Finish
DCH1000A-STD-FULL-RW/PA-689	STD	Full	Rw/PA	689
DCH1000A-STD-FULL-RW/PA-695	STD	Full	Rw/PA	695
DCH1000A-STD-FULL-RW/PA-622	STD	Full	Rw/PA	622
DCH1000A-STD-FULL-HW/PA-689	STD	Full	Hw/PA	689
DCH1000-STD-FULL-DS-689	STD	Full	DS	689
DCH1000A-STD-FULL-DS/HO-689	STD	Full	DS/HO	689

Arm types

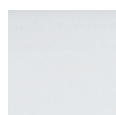
Regular arm (Rw/PA): Non-handed, regular arm with adjustable forearm assembly to accommodate a range of doors and frame reveal conditions. Mounts hinge side, top jamb or parallel arm. PA shoe included to allow installation in a parallel arm configuration.

Hold-open arm (Hw/PA): Non-handed, hold open arm with adjustable forearm assembly to accommodate a range of doors and frame reveal conditions. Mounts hinge side, top jamb or parallel arm. PA shoe included to allow installation in a parallel arm configuration.

Dead stop arm (DS): Non-handed, stamped, heavy duty, parallel arm includes a positive mechanical stop and non-adjustable forearm assembly for high volume traffic or potentially abusive installation conditions.

Dead stop hold-open arm (DS/HO): Non-handed, stamped, heavy duty, hold-open parallel arm includes a positive mechanical stop and non-adjustable forearm assembly for high volume traffic or potentially abusive installation conditions. Also includes a manually selective hold open function.

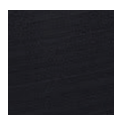
Finishes



ALUM/689



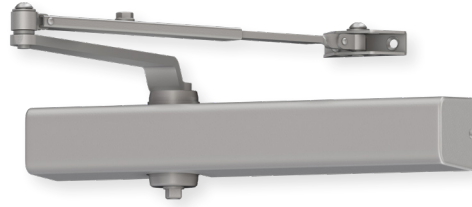
DKBRZ/695



MTBK/622

DCM1000 Series

Medium duty surface door closers



Specifications

- Grade 1, UL / UL 10C listed (non-hold open arms), ADA compliant at size 1
- Adjustable spring size 1-6
- 12" x 3/4" mounting hole pattern
- Staked, independent adjustment values: sweep speed, latch speed, and back-check
- Single piece, cast aluminum body
- Universal hardware pack

Closers

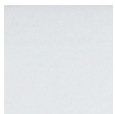
Product description	Cylinder type	Cover	Arm function	Finish
DCM1000-STD-SLIM-RW/PA-689	STD	Slim	Rw/PA	689
DCM1000-STD-SLIM-RW/PA-695	STD	Slim	Rw/PA	695
DCM1000-STD-SLIM-RW/PA-622	STD	Slim	Rw/PA	622
DCM1000-STD-FULL-RW/PA-689	STD	Full	Rw/PA	689
DCM1000-STD-FULL-RW/PA-695	STD	Full	Rw/PA	695
DCM1000-STD-FULL-RW/PA-622	STD	Full	Rw/PA	622
DCM1000-STD-SLIM-HW/PA-689	STD	Slim	Hw/PA	689
DCM1000-STD-SLIM-HW/PA-695	STD	Slim	Hw/PA	695
DCM1000-STD-FULL-HW/PA-689	STD	Full	Hw/PA	689
DCM1000-STD-FULL-HW/PA-695	STD	Full	Hw/PA	695

Arm types

Regular arm (Rw/PA): Non-handed, regular arm with adjustable forearm assembly to accommodate a range of doors and frame reveal conditions. Mounts hinge side, top jamb or parallel arm. PA shoe included to allow installation in a parallel arm configuration.

Hold-open arm (Hw/PA): Non-handed, hold open arm with adjustable forearm assembly to accommodate a range of doors and frame reveal conditions. Mounts hinge side, top jamb or parallel arm. PA shoe included to allow installation in a parallel arm configuration.

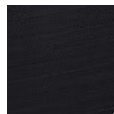
Finishes



ALUM/689



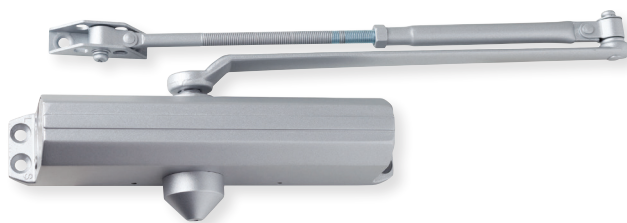
DKBRZ/695



MTBK/622

DCL2000 Series

Light duty surface door closers



Specifications

- Grade 1, UL / UL 10C listed (non-hold open arms), ADA compliant at size 1
- Adjustable spring size 1-6
- 9 1/16" x 3/4" mounting hole pattern
- Independent adjustment values: sweep speed, latch speed, and back-check
- Single piece, cast aluminum body
- Universal hardware pack

Closers

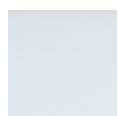
Product description	Cylinder type	Cover	Arm function	Finish
DCL2000-STD-LESS-RW/PA-689	STD	Less	Rw/PA	689
DCL2000-STD-LESS-RW/PA-695	STD	Less	Rw/PA	695
DCL2000-STD-LESS-RW/PA-622	STD	Less	Rw/PA	622
DCL2000-STD-LESS-HW/PA-689	STD	Less	Hw/PA	689
DCL2000-STD-FULL-RW/PA-689	STD	Full	Rw/PA	689
DCL2000-STD-FULL-RW/PA-622	STD	FULL	Rw/PA	622

Arm types

Regular arm (Rw/PA): Non-handed, regular arm with adjustable forearm assembly to accommodate a range of doors and frame reveal conditions. Mounts hinge side, top jamb or parallel arm. PA shoe included to allow installation in a parallel arm configuration.

Hold-open arm (Hw/PA): Non-handed, hold open arm with adjustable forearm assembly to accommodate a range of doors and frame reveal conditions. Mounts hinge side, top jamb or parallel arm. PA shoe included to allow installation in a parallel arm configuration.

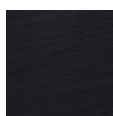
Finishes



ALUM/689



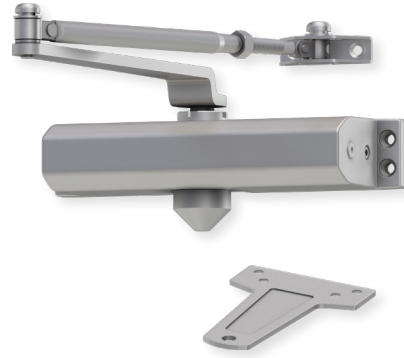
DKBRZ/695



MTBK/622

DCR8000 Series

Residential duty surface door closers



Specifications

- Grade 1, UL / UL 10C listed (non-hold open arms)
ADA compliant at size 1, (180 deg - TJ and Pull Side)
- Adjustable spring size 1-4
- 9 1/16" x 3/4" mounting hole pattern
- Independent adjustment values: sweep speed, latch speed, and back-check
- Single piece, cast aluminum body
- Universal hardware pack

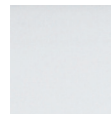
Closers

Product description	Cylinder type	Cover	Arm function	Finish
DCR8000-STD-LESS-RW/PA-689	STD	Less	Rw/PA	689
DCR8000-STD-LESS-RW/PA-695	STD	Less	Rw/PA	695
DCR8000-STD-LESS-RW/PA-622	STD	Less	Rw/PA	622

Arm types

Regular arm (Rw/PA): Non-handed, regular arm with adjustable forearm assembly to accommodate a range of doors and frame reveal conditions. Mounts hinge side, top jamb or parallel arm. PA shoe included to allow installation in a parallel arm configuration.

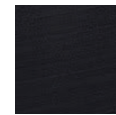
Finishes



ALUM/689



DKBRZ/695



MTBK/622

DCH1000, DCM1000, DCL2000 and DCR8000 Series
Drop plates

Drop plates

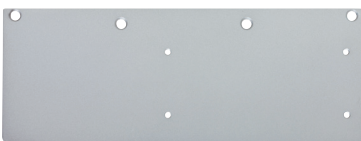
Product description	Plate type	Finish
DCH1000P-DP18-689	Pull side/Top jamb	689
DCH1000P-DP18-695	Pull side/Top jamb	695
DCH1000P-DP18-622	Pull side/Top jamb	622
DCH1000P-DP18PA-689	Parallel arm	689
DCH1000P-DP18PA-695	Parallel arm	695
DCH1000P-DP18PA-622	Parallel arm	622
DCM1000P-DP18TJ-689	Pull side/Top jamb	689
DCM1000P-DP18TJ-695	Pull side/Top jamb	695
DCM1000P-DP18TJ-622	Pull side/Top jamb	622
DCM1000P-DP18PA-689	Parallel arm	689
DCM1000P-DP18PA-695	Parallel arm	695
DCM1000P-DP18PA-622	Parallel arm	622
DCL2000P-DP18TJ-689	Top jamb	689
DCL2000P-DP18TJ-695	Top jamb	695
DCL2000P-DP18TJ-622	Top jamb	622
DCL2000P-DP18PA-689	Parallel arm	689
DCL2000P-DP18PA-695	Parallel arm	695
DCH4000-18-689	Pull side	689
DCH4000-18-695	Pull side	695
DCH4000-18-622	Pull side	622
DCH4000-18PA-689	Parallel arm	689
DCH4000-18PA-695	Parallel arm	695
DCH4000-18PA-622	Parallel arm	622
DCH4000-18TJ-689	Push side top jamb	689
DCH4000-18TJ-695	Push side top jamb	695
DCH4000-18TJ-622	Push side top jamb	622
DCH4000-18G-689	Flush ceiling push side	689
DCH4000-18G-695	Flush ceiling push side	695
DCH4000-18G-622	Flush ceiling push side	622

Note: DCL2000P drop plates are also compatible with DCR8000 series closers.

DCH1000 Series

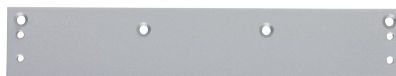


DCH1000
Pull side/top jamb



DCH1000
Parallel arm

DCM1000 Series



DCM1000
Pull side/Top jamb



DCM1000
Parallel arm

DCL2000 Series

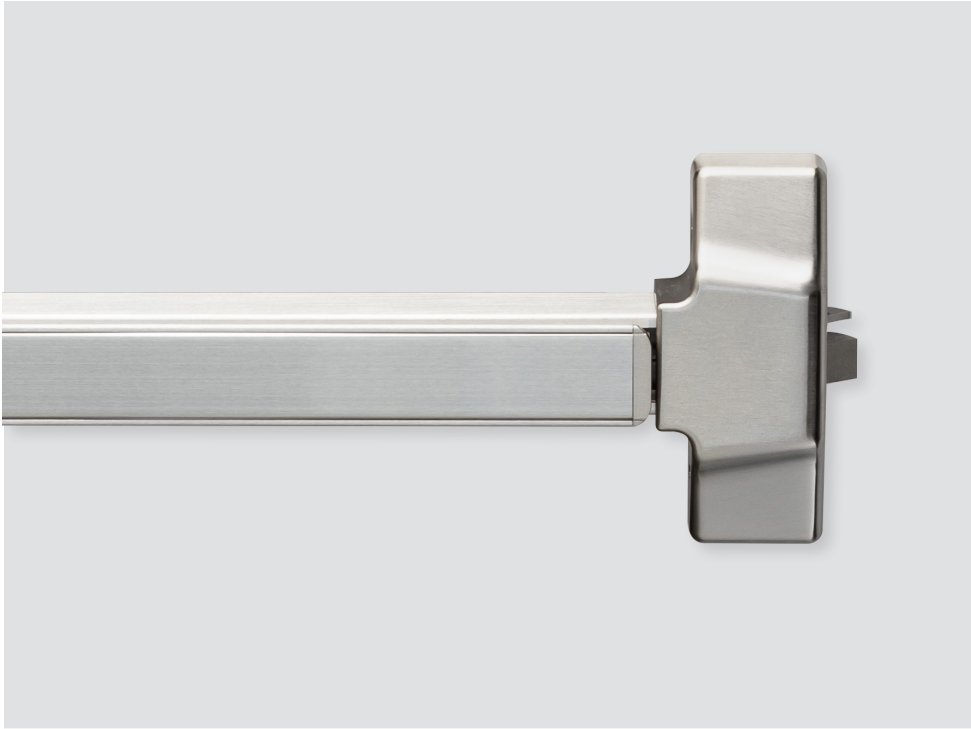


DCL2000
Top jamb



DCL2000
Parallel arm

Exit devices



ED1000 Series

Grade 1 exit devices



Specifications

- Grade 1, UL listed panic device, UL listed 3-hour fire device
- Durable, aluminum mechanism case construction
- Deadlatching standard
- Devices fit standard 1³/₄" thick door
- 4¹/₄" minimum stile width
- Hex key dogging standard on all panic devices
- All devices and trim are non-handed
- Universal hardware pack for wood and hollow metal
- Door widths: 36" device fits 29" to 36" door size; 48" device fits 33" to 48" door size

ED1000-R Series rim panic device

Product description	Trim function	Device length	Finish
ED1000-R-EO-3 FT-US26D/626	Exit Only	3'	US26D/626
ED1000-R-EO-3 FT-US19/622	Exit Only	3'	US19/622
ED1000-R-EO-4 FT-US26D/626	Exit Only	4'	US26D/626
ED1000-R-EO-4 FT-US19/622	Exit Only	4'	US19/622
ED1000-R-EO-3 FT-US32D/630	Exit Only	3'	US32D/630
ED1000-R-EO-3 FT-US19/622	Exit Only	3'	US19/622
ED1000-R-EO-4 FT-US32D/630	Exit Only	4'	US32D/630
ED1000-R-EO-4 FT-US19/622	Exit Only	4'	US19/622
ED1000-R-EO-3 FT-US10B/613	Exit Only	3'	US10B/613
ED1000-R-EO-3 FT-US19/622	Exit Only	3'	US19/622
ED1000-R-EO-4 FT-US10B/613	Exit Only	4'	US10B/613
ED1000-R-EO-4 FT-US19/622	Exit Only	4'	US19/622

ED1000-R-F Series rim fire exit hardware

Product description	Trim function	Device length	Finish
ED1000-R-F-EO-3 FT-US26D/626	Exit Only	3'	US26D/626
ED1000-R-F-EO-3 FT-US10B/613	Exit Only	3'	US10B/613
ED1000-R-F-EO-3 FT-US19/622	Exit Only	3'	US19/622

ED1000-V Series surface vertical rod panic device

Product description	Trim function	Device length	Door height	Finish
ED1000-V-EO-3 FT-7'DH-US26D/626	Exit Only	3'	7'	US26D/626
ED1000-V-EO-3 FT-7'DH-US10B/613	Exit Only	3'	7'	US10B/613
ED1000-V-EO-3 FT-7'DH-US19/622	Exit Only	3'	7'	US19/622

ED1000 Series

Trim and accessories

Trim

Product description	Function	Cylinder	Finish
ED1000T-CLRM-R-ESC-NC-US26D/626	Escutcheon lever - Classroom	NC (requires mortise ¹)	US26D/626
ED1000T-CLRM-R-ESC-NC-US10B/613	Escutcheon lever - Classroom	NC (requires mortise ¹)	US10B/613
ED1000T-CLRM-R-ESC-NC-US19/622	Escutcheon lever - Classroom	NC (requires mortise ¹)	US19/622
ED1000T-NL-R-ESC-NC-US26D/626	Escutcheon lever - Night latch	NC (requires rim)	US26D/626
ED1000T-NL-R-ESC-NC-US10B/613	Escutcheon lever - Night latch	NC (requires rim)	US10B/613
ED1000T-NL-R-ESC-NC-US19/622	Escutcheon lever - Night latch	NC (requires rim)	US19/622
ED1000T-PASS-R-ESC-US26D/626	Escutcheon lever - Passage blank escutcheon	-	US26D/626
ED1000T-PASS-R-ESC-US10B/613	Escutcheon lever - Passage blank escutcheon	-	US10B/613
ED1000T-PASS-R-ESC-US19/622	Escutcheon lever - Passage blank escutcheon	-	US19/622
ED1000T-CLRM-TP-NC-US26D/626	Thumbpiece pull plate - Classroom	NC (requires mortise ¹)	US26D/626
ED1000T-CLRM-TP-NC-US10B/613	Thumbpiece pull plate - Classroom	NC (requires mortise ¹)	US10B/613
ED1000T-CLRM-TP-NC-US19/622	Thumbpiece pull plate - Classroom	NC (requires mortise ¹)	US19/622
ED1000T-NL-HPUL-NC-US26D/626	Handle pull plate - Night latch	NC (requires rim)	US26D/626
ED1000T-NL-HPUL-NC-US10B/613	Handle pull plate - Night latch	NC (requires rim)	US10B/613
ED1000T-NL-HPUL-NC-US19/622	Handle pull plate - Night latch	NC (requires rim)	US19/622

NC = No cylinder included

¹ Mortise cylinder with standard cam similar to Schlage B502-191 cam



Escutcheon lever -
Classroom



Escutcheon lever -
Night latch



Escutcheon lever -
Passage blank
escutcheon



Thumbpiece
pull plate -
Classroom



Handle
pull plate -
Night latch

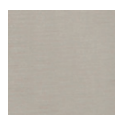
Finishes



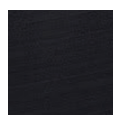
US26D/626



US10B/613



US32D/630



US19/622

Extension rods

Product description	Length	Finish
ED1000-EXTRD-US26D/626	12"	US26D/626
ED1000-EXTRD-US10B/613	12"	US10B/613
ED1000-EXTRD-US19/622	12"	US19/622

ED1500 Series

Grade 1 exit devices



Specifications

- Grade 1, UL listed panic device, UL listed 3-hour fire rim device
- Durable, steel mechanism case construction
- Deadlatching standard
- Devices fit standard 1 3/4" thick door
- 3 1/2" minimum stile width
- Hex key dogging standard on all panic devices
- Rim devices and trim are non-handed; Surface vertical devices easily field reversible
- Universal hardware pack for wood and hollow metal
- Door widths: 36" device fits 29" to 36" door size; 48" device fits 33" to 48" door size

ED1500-R Series rim panic device

Product description	Trim function	Device length	Finish
ED1500-R-EO-3 FT-SP28/689	Exit only	3'	SP28/689
ED1500-R-EO-3 FT-US19/622	Exit only	3'	US19/622
ED1500-R-EO-4 FT-SP28/689	Exit only	4'	SP28/689
ED1500-R-EO-4 FT-US19/622	Exit only	4'	US19/622
ED1500-R-EO-3 FT-SP313/695	Exit only	3'	SP313/695
ED1500-R-EO-3 FT-US19/622	Exit only	3'	US19/622
ED1500-R-EO-4 FT-SP313/695	Exit only	4'	SP313/695
ED1500-R-EO-4 FT-US19/622	Exit only	4'	US19/622

ED1500-R-F Series rim fire exit device

Product description	Trim function	Device length	Finish
ED1500-R-F-EO-3 FT-SP28/689	Exit only	3'	SP28/689
ED1500-R-F-EO-3 FT-SP313/695	Exit only	3'	SP313/695
ED1500-R-F-EO-3 FT-US19/622	Exit only	3'	US19/622

ED1500-V Series surface vertical rod panic device

Product description	Trim function	Device length	Door height	Finish
ED1500-V-EO-3 FT-7'DH-SP28/689	Exit only	3'	7'	SP28
ED1500-V-EO-3 FT-7'DH-SP313/695	Exit only	3'	7'	SP313/695
ED1500-V-EO-3 FT-7'DH-US19/622	Exit only	3'	7'	US19/622

ED1500 Series

Trim and accessories

Trim

Product description	Function	Cylinder	Finish
ED1500T-CLRM-R-ESC-NC-SP28/689	Escutcheon lever - Classroom	NC (requires mortise ¹)	SP28/689
ED1500T-CLRM-R-ESC-NC-SP313/695	Escutcheon lever - Classroom	NC (requires mortise ¹)	SP313/695
ED1500T-CLRM-R-ESC-NC-US19/622	Escutcheon lever - Classroom	NC (requires mortise ¹)	US19/622
ED1500T-NL-R-ESC-NC-SP28/689	Escutcheon lever - Night latch	NC (requires mortise ¹)	SP28/689
ED1500T-NL-R-ESC-NC-SP313/695	Escutcheon lever - Night latch	NC (requires mortise ¹)	SP313/695
ED1500T-NL-R-ESC-NC-US19/622	Escutcheon lever - Night latch	NC (requires mortise ¹)	US19/622
ED1500T-NL-PULL-NC-SP28/689	Raised lip pull plate - Night latch	NC (requires rim)	SP28/689
ED1500T-NL-PULL-NC-SP313/695	Raised lip pull plate - Night latch	NC (requires rim)	SP313/695
ED1500T-NL-PULL-NC-US19/622	Raised lip pull plate - Night latch	NC (requires rim)	US19/622
ED1500T-DUM-PULL-SP28/689	Raised lip pull plate - Dummy	-	SP28/689
ED1500T-DUM-PULL-SP313/695	Raised lip pull plate - Dummy	-	SP313/695
ED1500T-DUM-PULL-US19/622	Raised lip pull plate - Dummy	-	US19/622
ED1500T-CLRM-R-KDC-SP28/689	Key in lever round rose - Classroom	KDC	SP28/689
ED1500T-CLRM-R-KDC-SP313/695	Key in lever round rose - Classroom	KDC	SP313/695
ED1500T-CLRM-R-KDC-US19/622	Key in lever round rose - Classroom	KDC	US19/622
ED1500T-NL-R-KDC-SP28/689	Key in lever round rose - Night latch	KDC	SP28/689
ED1500T-NL-R-KDC-SP313/695	Key in lever round rose - Night latch	KDC	SP313/695
ED1500T-NL-R-KDC-US19/622	Key in lever round rose - Night latch	KDC	US19/622
ED1500T-CLRM-R-SFIC-SP28/689	Key in lever round rose - Classroom	Less SFIC	SP28/689
ED1500T-CLRM-R-SFIC-US19/622	Key in lever round rose - Classroom	Less SFIC	US19/622
ED1500T-NL-R-SFIC-SP28/689	Key in lever round rose - Night latch	Less SFIC	SP28/689
ED1500T-NL-R-SFIC-US19/622	Key in lever round rose - Night latch	Less SFIC	US19/622
ED1500T-NL-PULL-ESC-NC-SP28/689	Handle pull plate - Night latch	NC (requires rim)	SP28/689
ED1500T-NL-PULL-ESC-NC-SP313/695	Handle pull plate - Night latch	NC (requires rim)	SP313/695
ED1500T-NL-PULL-ESC-NC-US19/622	Handle pull plate - Night latch	NC (requires rim)	US19/622
ED1500T-DUM-PULL-ESC-SP28/689	Handle pull plate - Dummy	-	SP28/689
ED1500T-DUM-PULL-ESC-SP313/695	Handle pull plate - Dummy	-	SP313/695
ED1500T-DUM-PULL-ESC-US19/622	Handle pull plate - Dummy	-	US19/622

NC = No cylinder included

KDC = KIL cylinder, Schlage C Keyway, Keyed differently

¹ Mortise cylinder with standard cam similar to Schlage B502-191 cam



Escutcheon lever -
Classroom/
Night latch



Raised lip
pull plate -
Night latch



Raised lip
pull plate -
Dummy



Key in lever round
rose - Classroom/
Night latch
Less SFIC not shown



Handle pull
plate - Night latch



Handle pull
plate - Dummy

Finishes



SP28/689



SP313/695



US19/622

Extension rods

Product description	Length	Finish
ED1500-EXTRD-SP28/689	12"	SP28/689
ED1500-EXTRD-SP313/695	12"	SP313/695
ED1500-EXTRD-US19/622	12"	US19/622

About Allegion

At Allegion (NYSE: ALLE), we design and manufacture innovative security and access solutions that help keep people safe where they live, learn, work and connect. We're pioneering safety with our strong legacy of brands like CISA®, Interflex®, LCN®, Schlage®, SimonsVoss® and Von Duprin®. Our comprehensive portfolio of hardware, software and electronic solutions is sold around the world and spans residential and commercial locks, door closer and exit devices, steel doors and frames, access control and workforce productivity systems.

For more, visit www.allegion.com

KRYPTONITE ■ LCN ■  ■ STEELCRAFT ■ VON DUPRIN