

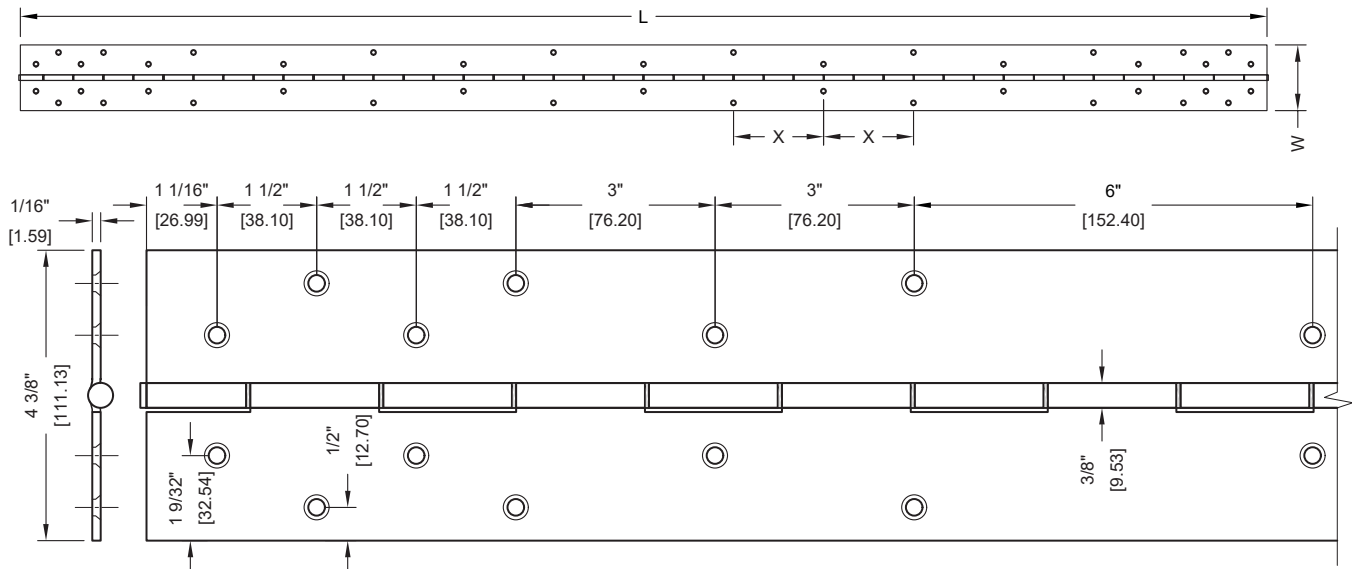
**CONCEALED LEAF - STAINLESS STEEL**

**Features:**

- ▶ UL Listed 3 Hour Fire-Rated (Metal)  
90 min. wood composite
- ▶ For heavy duty doors, up to 300 lbs.
- ▶ Door Thickness: 1-3/4" maximum
- ▶ Length: 83-1/8", 95-1/8", 119-1/8"
- ▶ Material: 14 Ga. (0.075") Type 304 Stainless Steel
- ▶ Finishes: US32D
- ▶ Door Reinforcement:  
Wood - none required up to 200 lbs.  
Metal Doors - a 1/8" (3mm) thick reinforcement plate is recommended along the hinge edge for proper thread engagement of the adjustment studs
- ▶ Dual 6/6 Nylon bearings between each knuckle
- ▶ Packed with all wood and all machine screws



CONCEALED LEAF STAINLESS STEEL HINGES Full Mortise Type • Commercial Weight				
ITEM #	LENGTH (L)	WIDTH (W)	THK.	# OF SCREW HOLES
CTH83-SS	83 - 1/8"	4 - 3/8"	1/16"	42
CTH95-SS	95 - 1/8"	4 - 3/8"	1/16"	46
CTH119-SS	119 - 1/8"	4 - 3/8"	1/16"	54
Material: Satin Stainless Steel				
Size of Screws				Pieces Per Box
Metal Frame		Wood Door		1
#10-16 x 1/2" Self Drilling Machine Screws		#10-12 x 1-1/4" Wood Screw		



**CONCEALED LEAF CONTINUOUS HINGE MODEL CROSS REFERENCE**

CAL-ROYAL	HAGER	MARKAR	MCKINNEY	ZERO	STANLEY	ABH	SELECT
CTH83-SS							
CTH95-SS	790-900	FM300	MCK-FM300	919STST	651	A500	SL300
CTH119-SS							