

CTH83-SS / CTH95-SS / CTH119-SS

STANDARD CONTINUOUS HINGE (83", 95", 119")

Features

- UL Listed 3 hour fire-rated
- Individually poly-bagged with mounting screws
- Nylon bearing between each knuckle
- For Heavy Duty doors, up to 300lbs
- IP Qty: 1
- MC Qty: 1

Material

- Stainless Steel

Dimensions

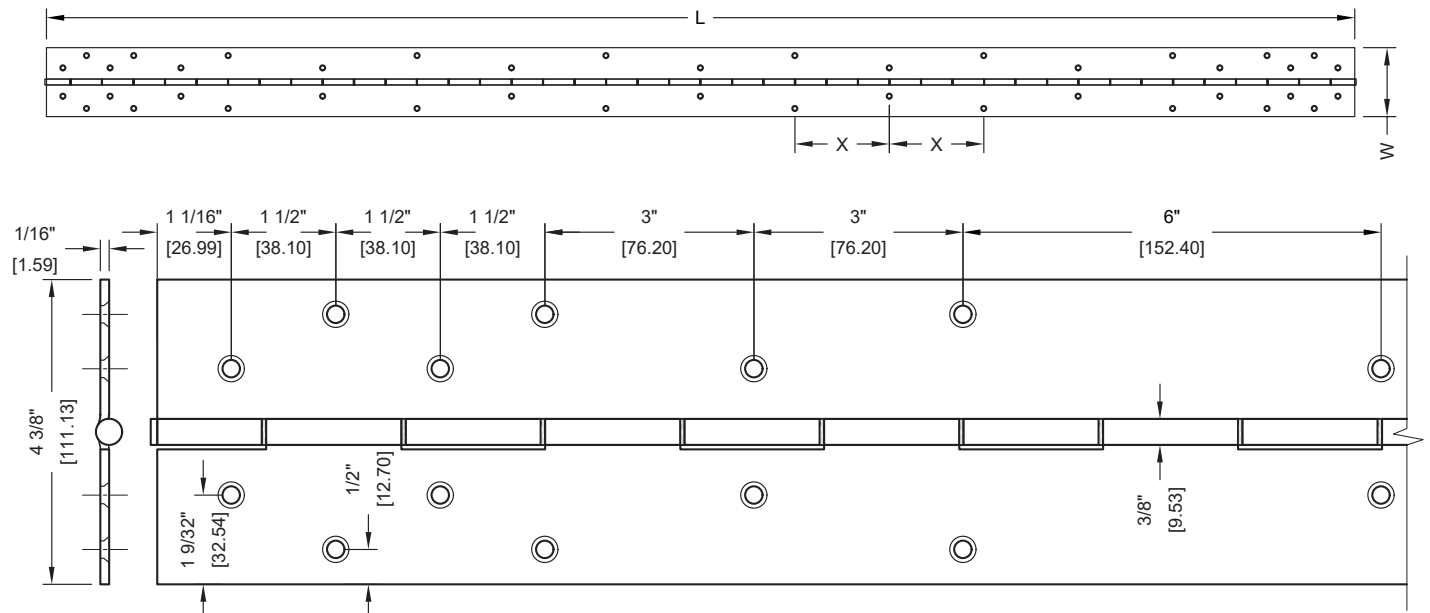
- Width: 4-3/8"
- Thickness: 1/16"
- Lengths: 83", 95" & 119"

Finishes

- US32D - Satin Stainless Steel



(L)	(W)	THK.	# OF SCREW HOLES	SCREW DISTANCE (X)
83-1/8"	4-3/8"	1/16"	42	6"
95-1/8"	4-3/8"	1/16"	46	6"
119-1/8"	4-3/8"	1/16"	54	6"



CAL ROYAL PRODUCTS, INC.

6605 Flotilla St., City of Commerce, CA 90040 U.S.A.
 Phone: (323) 888-6601 • (800) 876-9258 • Fax: (323) 888-6699 • (800) 222-3316
 Email: sales@cal-royal.com • Website: www.cal-royal.com

The illustration and technical description in this cut sheet is current as of the date in the version date on the right. Cal-Royal Product reserves the right to, and may, on occasions, make changes and/or improvements in designs and dimensions without prior notice.

(HGC-3236-07/25-1of1)

2025 01

YEAR PRINTED VERSION NO.

© Cal-Royal Products, Inc. 2025