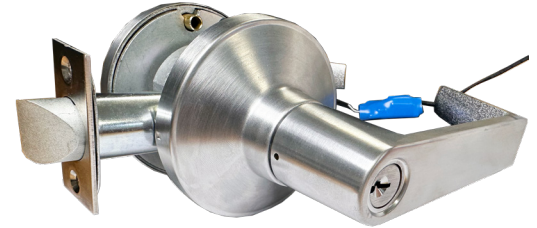


# CL190-HD Series

- **HEAVY DUTY GRADE 1 CYLINDRICAL LOCK**
- **FIELD SELECTABLE FAIL SAFE (EL) <-> FAIL SECURE (EU)**
- **AUTO-VOLTAGE DETECTION ACCEPTS 11-30V**
- **MADE IN THE USA**
- **UL LISTED**
- **5 -YEAR NO HASSLE WARRANTY**



The Command Access CL190-HD series is a low-energy motorized lever control cylindrical lock ideal for any continuous duty application or condition requiring low surge and hold current. It is built on a heavy-duty cylindrical lock chassis and is made for high-use environments. The whole assembly is produced right here in the US. Our motor module auto-detects anything from 11-30VDC & includes a dip switch to change from Fail Safe (EL) to Fail Secure (EU). Allowing inventory flexibility eliminates the need to inventory 12 or 24V & EU or EL models. Optional additions: built-in request to exit (REX) switch & Molex connectors for plug & play installations.

## SPECIFICATIONS

### Voltage:

- Voltage range – 11 to 30 VDC
- Standard - Average Current Peak: 300mA, Average Current Hold: 100mA

### Product Details:

- Complete Lock Box: 8.5"W x 10.5"L: x 4.75"H
- Weight: 6 Lbs
- Master Pack Qty: 6 ea.

### Accessories

- Request-to-Exit - Built-in Request to Exit switch
- Door Position Switch - see IDPS series
- QC/CON/BC - Quick Connects

## FEATURES

- Low maximum current draw 300 mA: use more locks on a single power supply. Additional savings for the owner.
- Low holding current 100 mA : reliable operation and meets sustainable consideration.
- Fail Safe(EL) & Fail Secure(EU) field selectable with flip of a switch.
- Multiple lever styles & finishes available.
- Available SFIC or LFIC (Schlage): Cylinder not included.
- Available with Schlage C type keyway standard
- Request-to-exit built-in.
- 5-year "No Hassle" warranty.

## MODELS AVAILABLE:

|                   |                                                                                                                                                                                                             |
|-------------------|-------------------------------------------------------------------------------------------------------------------------------------------------------------------------------------------------------------|
| <b>CL190HD-EU</b> | Outside lever unlocked (EU) electronically. Latchbolt retracted by key out-side or lever inside. Switched power allows outside lever to retract latchbolt. Inside lever is always free for immediate egress |
| <b>CL190HD-EL</b> | Outside lever locked (EL) electronically. Latchbolt retracted by key outside or lever inside. Switched power allows outside lever to retract latchbolt. Inside lever is always free for immediate egress.   |

## HOW TO ORDER

| CATEGORY | SERIES | FUNCTION | LEVER | VOLTAGE  | FINISH | BACKSET                           | STRIKE                          | CYLINDER          | KEYING | OPTIONS                                                        |
|----------|--------|----------|-------|----------|--------|-----------------------------------|---------------------------------|-------------------|--------|----------------------------------------------------------------|
| CL       | 190-HD | EU/EL    | L6    | 12-30VDC | 612*   | 2-3/4"<br><small>STANDARD</small> | ASA-<br><small>STANDARD</small> | P                 | SCC    | REX-<br><small>REQUEST TO EXIT SWITCH</small>                  |
|          |        |          | L17   |          | 613    | 2-3/8"                            | FL -<br><small>FULL LIP</small> | LC                |        | QC/CON/BC -<br><small>MOLEX CONNECTORS - SPECIFY BRAND</small> |
|          |        |          |       |          | 622    | 5"*                               | T-<br><small>"T" STRIKE</small> | SFIC              |        | SF -<br><small>SPLIT FINISH *</small>                          |
|          |        |          |       |          | 625*   |                                   |                                 | LFIC <sup>1</sup> |        | AM -<br><small>ANTIMICROBIAL COATING *</small>                 |
|          |        |          |       |          | 626    |                                   |                                 |                   |        |                                                                |

\* Special order - Lead time may be extended  
 1. Available in L6 lever only

### NEED A LOCKING HARDWARE POWER SUPPLY?

RECOMMENDED LOCKING HARDWARE POWER SUPPLIES:

- PS204/PS204B    • PS220/220B    • PS480B
- PS210            • PS440B

