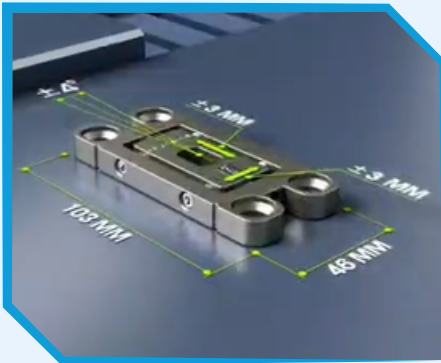


ALREX™

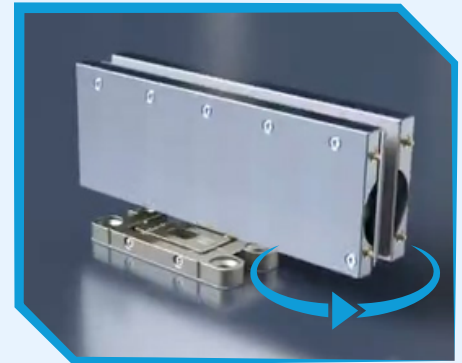
INSTALLATION INSTRUCTIONS



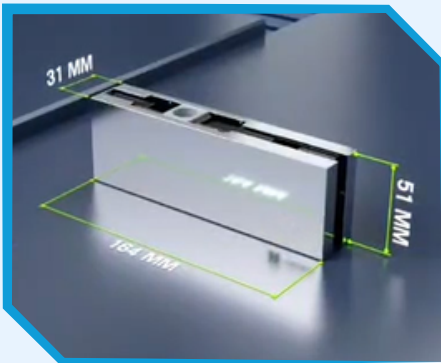
FIXED BASE



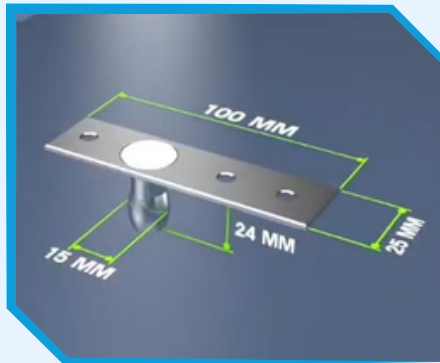
DIG-FREE HINGE BODY



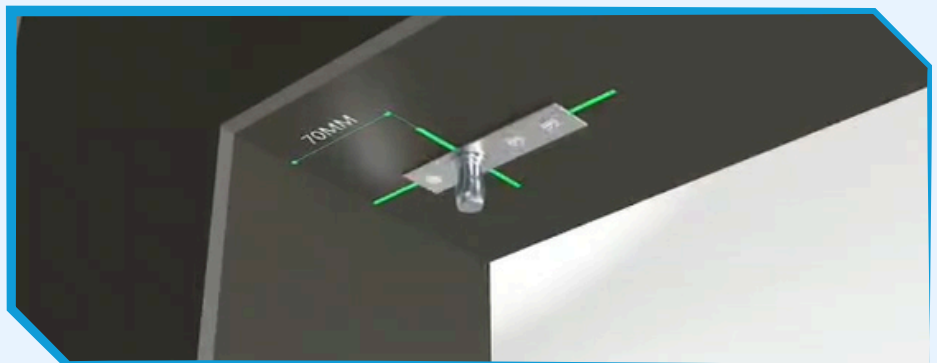
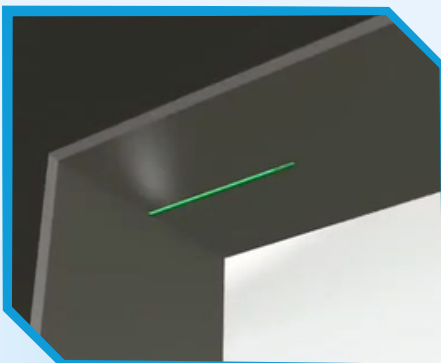
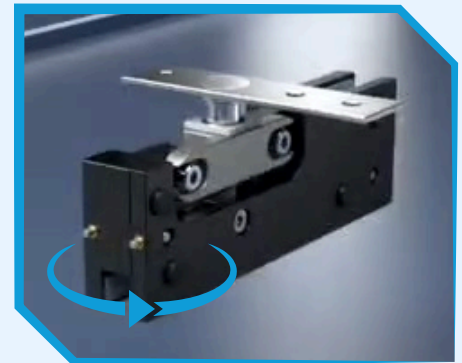
HOLD OPEN AT 90°
(OPTIONAL NON -HO)



TOP PATCH



UPPER BRACKET

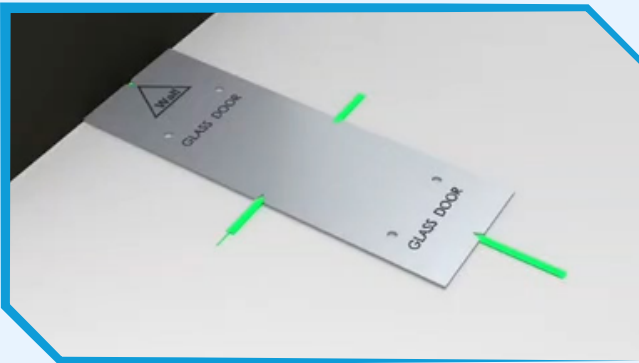


FIX THE POSITION OF THE BRACKET

Measure the center point above the door. Fix the upper bracket securely. Center point to wall distance should be 70mm.

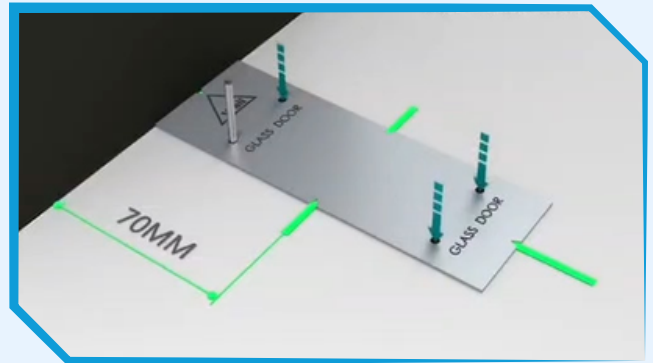


INSTALLATION INSTRUCTIONS



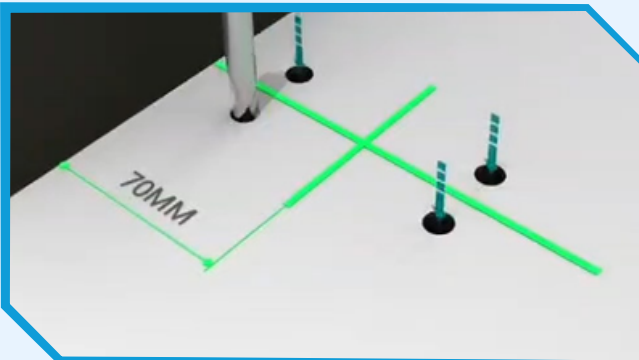
BASE

Point the arrow towards the wall. Fix the template to the center point of the wall. Center point to wall distance should be 70mm.



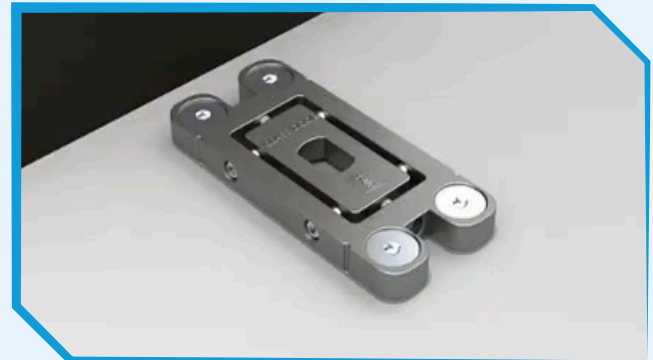
DRILL BASE HOLES

Using a number 31 drill bit, drill to a depth of 1.6 inches.



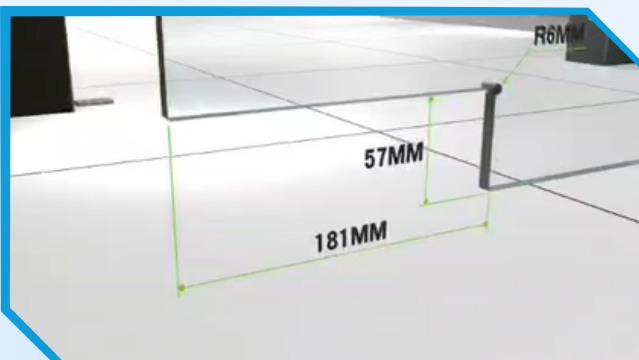
DRILLING HOLES FOR BASE SCREWS

Use a 3/8 drill bit on the pre-drilled hole to drill to a depth of 2.4 inches.

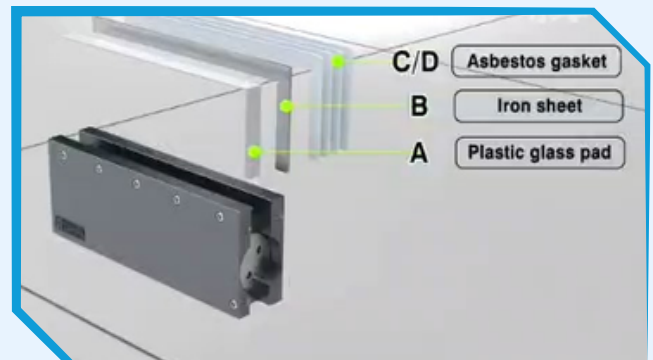


FIX BASE

Place the anti-slip pad on the base and secure the expansions. Screw tightly.



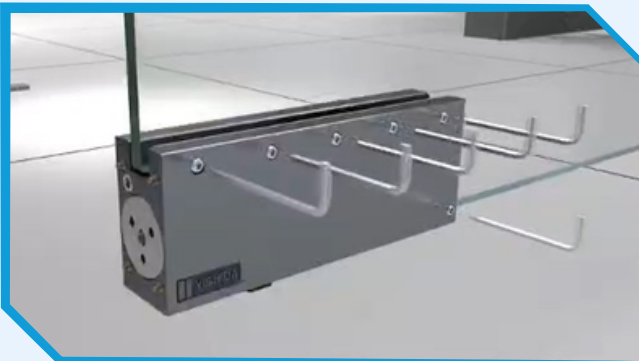
DIG FREE BOTTOM GLASS CUT-OUT



INSTALL THE GLASS GASKET

Insert item A, followed by item B, aligning them with the screw holes. Place C/D evenly on both sides of item A and B.

INSTALLATION INSTRUCTIONS



INSTALL THE DIG-FREE HINGE BODY



TOP PATCH OPENING



INSTALL GLASS TOP PATCH



INSTALL DIG-FREE HINGE



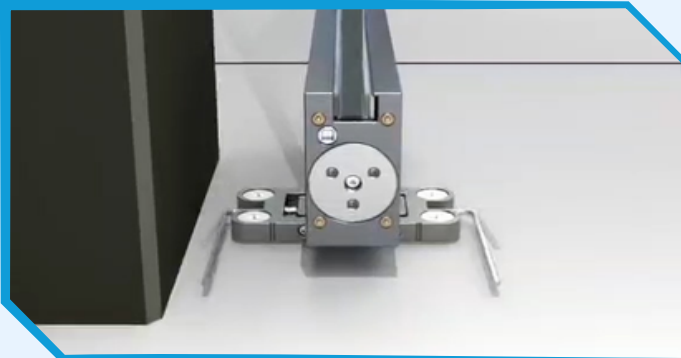
INSTALL THE TOP PATCH AND FIX IT
Install the movable clamp, then lock the screw again for fixation.



ADJUST THE SIZE OF THE DOOR GAP
Rotate and adjust the hexagonal screw. Adjust the size of the front and rear door gaps and fix them in place.

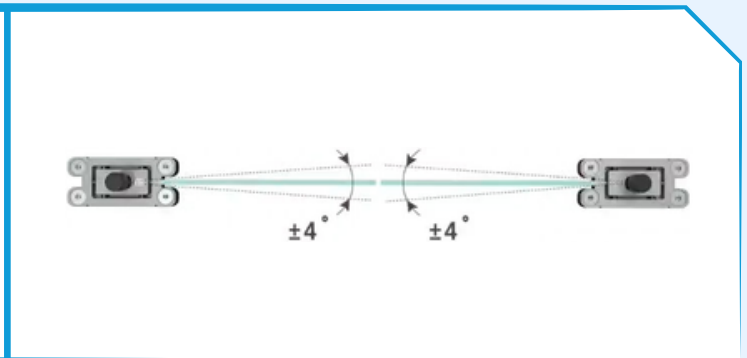
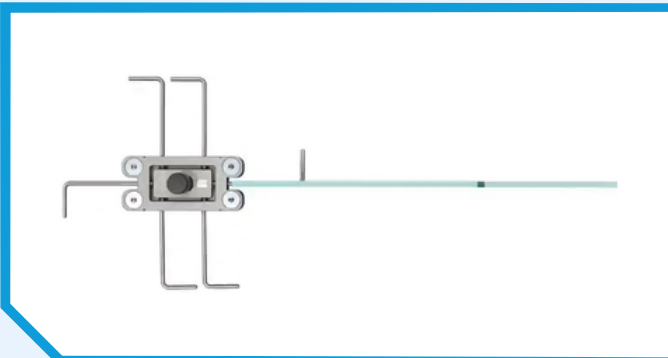


INSTALLATION INSTRUCTIONS



OPEN THE GLASS DOOR TO 90°

Adjust and test the application. The base should be able to move back and forth, and left to right.



BIRDS EYE VIEW

Adjust the left and right positioning of the two doors to be consistent and parallel.



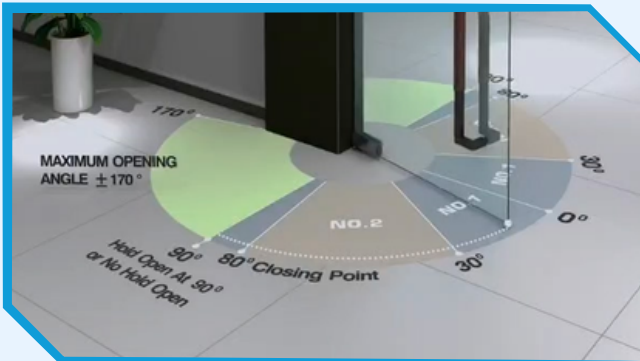
THE UPPER AND LOWER AXIS MUST BE ON THE SAME VERTICAL LINE

ADJUST THE CLOSING SPEED

The slower the adjustment, the greater the buffering angle and longer closing time. To effectively adjust the speed, rotate the hex key 1/4 inch each time.



INSTALLATION INSTRUCTIONS



INSTALLATION IS COMPLETE



INSTALL THE PATCH SHELL PANEL

Align the holes on the shell panels with the fixing nails of the patch mechanism. Press down on the spring nail to align it with the holes on the shell panel and press tightly.



INSTALL THE MAIN BODY SHELL PANEL

Align the holes on the shell panel with the fixing pins of the hinge mechanism. Press the spring pin down to align it with the holes of the shell panel and press tightly.

