



PRO GLASS

Glass Door Hydraulic Hinges



01 Product Features

ALREX Premium Hydraulic Door-Closer Hinge

Engineered for Frameless Glass Door Systems

Enjoy a silent, slam-free experience with ALREX's advanced hydraulic hinge technology—seamlessly combining commercial-grade door closer performance with architectural elegance. Perfectly designed for frameless glass doors in high-traffic environments.

Key Advantages:

- **Smart Hydraulic Speed Control:** Precision-engineered hydraulic system delivers a smooth closing. Designed to prevent door slams while ensuring full ADA compliance.
- **Architectural-Grade Aesthetics:** Ultra-slim profile with concealed adjustment system. Maintains clean sightlines for glass installations in luxury retail, office partitions, luxury hospitality, shower doors, etc.
- **Heavy Duty Performance:** Stainless-steel bearings + marine-grade aluminum alloy construction withstands 1M+ cycles (ANSI BHMA 156.17 certified). Temperature suitable (-40°F to 212°F) for interior and exterior glass door systems.
- **Easy Installation:** Ensures perfect glass door alignment without shimming.

Why Professionals Choose ALREX:

- Exceeds ANSI/BHMA A156.7 Grade 1 standards
- Reduces maintenance costs by 40% vs traditional overhead closers
- Proven Reliability: Validated across 200,000+ installations in hospitals, schools, and offices.

Technical Superiority:

- **Latching Force:** Adjustable from 2.5-5 lbf (meets ADA 4.1.3(7) requirements)
- 5-year commercial warranty + LEED contribution documentation
- US Patent #10633905
- Operating Temp. Range: -40°F to 212°F
- Compatible with 8 mm - 12 mm glass doors

Enhance your architectural glass installations with ALREX's discreet hydraulic system—seamlessly blending advanced engineering with a sleek, minimalist design.



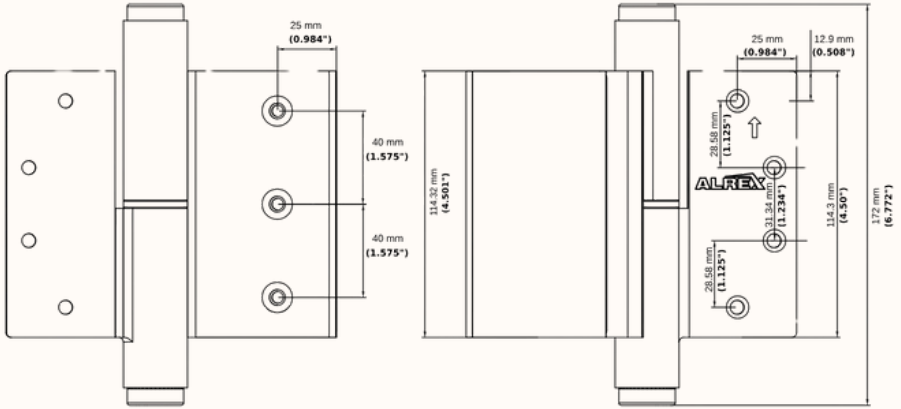
**790 lbs (360kg)
Load-Bearing Test**



**1,000,000 Cycles
Durability Test**

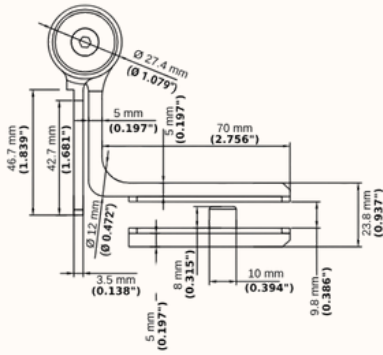


04 Product Dimensions



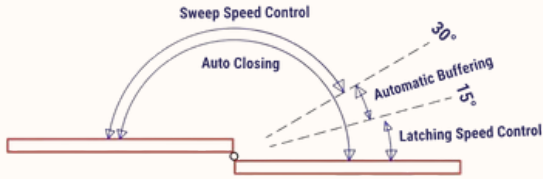
±0.011"

±0.011"



±0.011"

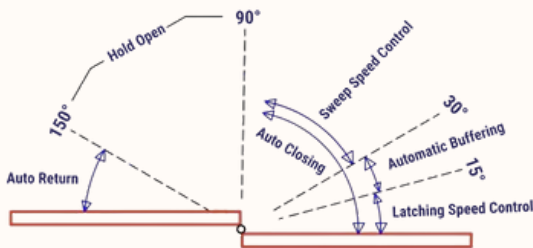
Free Swing (Non- Hold Open): Movement Guide



Free Swing: Function Description

- Maximum door opening: 180°
 - 180°-30°: Sweep Speed controlled using the top (Force) adjustment.
 - 30-15°: The hydraulic system slows the sweep speed within the Automatic Buffering zone.
 - 15°-0: Adjustable latching speed controlled using the bottom (Latch Speed) adjustment.
- The exact *movement zones* slightly shift depending on desired adjustment made.

Hold Open: Movement Guide



Free Swing: Function Description

- Maximum door opening: 180°
 - Door will return to 150° automatically if opened past 150°
 - Automatic closing at ~90°
 - 30-15°: The hydraulic system slows the sweep speed within the Automatic Buffering zone.
 - 15°-0: Adjustable latching speed controlled using the bottom (Latch Speed) adjustment.
- The exact *movement zones* slightly shift depending on desired adjustment made.

Recommended Hinge Guide:

Door Weight	Door Size	Hinge Qty (pc)
Up to 150 lbs Up to 200 lbs	3'0" x 7'0"	2 Hydraulic / 1 Free Swing 3 Hydraulic
Up to 200 lbs Up to 250 lbs	3'0" x 8'0"	3 Hydraulic / 1 Free Swing 4 Hydraulic
Up to 180 lbs Up to 220 lbs	4'0" x 7'0"	3 Hydraulic 3 Hydraulic / 1 Free Swing
Up to 200 lbs Up to 250 lbs	4'0" x 8'0"	3 Hydraulic / 1 Free Swing 4 Hydraulic

ALREX™ PRO GLASS



Installation Instructions

Read All Instructions Before Beginning Installation

The **PRO GLASS** hydraulic hinge is built to last without needing maintenance. It can work in one of two ways:

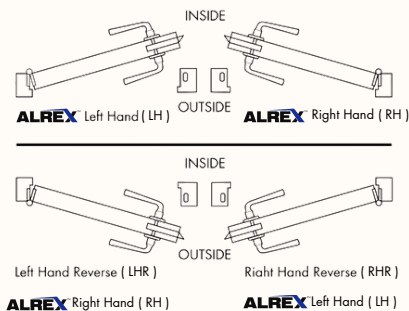
1. **Hold Open (H) Function** – If the door opens past **85 degrees**, it stays open. The closing and latching speed can be adjusted.
2. **Standard Full Close (S) Function** – The door **automatically closes from 175 degrees**. The closing and latching speed can also be adjusted.

Both types of hinges are adjusted the same way.

Installation Instructions

Before You Start:

- **ONLY** adjust in the closed position
- Install all hinges in regular hinge cut-outs before making adjustments.
- Pay attention to the **handing** (left or right) and **top orientation** of the hinges.
- If a Free Swing (Dummy) hinge is being used, please install in the middle or middle-top hinge position.



Hinge Handing (Left or Right Door Opening)

Alex hydraulic hinges are made specifically for **left-hand or right-hand doors**. Make sure the hinge direction **matches** the way your door opens. If not, the hinge **won't work correctly**.

How to Adjust the Hinges

Once the Alrex hinges are installed, open and close the door to see how it moves. Then, follow these steps to adjust it:

Step 1: Adjust Closing Speed (Force Adjusting) - Fig. 1

This top adjustment is compressing the spring within the Alrex hinge.

1. Remove the dust plug.
2. ONLY Use the tools provided to make adjustments with hinge. Use the tool to turn the top of the hinge **clockwise** (full turns) to change the closing speed. Notice the notching to help you ensure all hinges are adjusted the same.
3. Adjust the **top hinge first**, then adjust the remaining hydraulic hinges in descending order.
4. Make sure **all hydraulic hinges** are adjusted **the same** using the gauge on the tool.
5. Keep adjusting **until you get the speed you want**.
6. Once the top adjustment is complete, replace the **dust plug**.

Step 2: Adjust Latching Speed (Latch Speed Adjusting) - Fig. 2

This bottom adjustment is adjusting the speed of the hydraulic fluid being released.

1. Insert the tool into the **bottom** of each hydraulic hinge.
2. Turn it **counterclockwise** (half turns) to adjust the latching speed.
3. Make small, equal adjustments until the latching speed is at your preferred speed.
4. Use the gauge on the provided tool to **match all hinges** to the same setting.

FIG. 1



FIG. 2



Installation Video/Tutorial



Hinges aren't an afterthought... they're our only thought!

ALREX USA, LLC

417 E. Second St, Rochester, MI 48307

- (248) 617-4851
- support@alrexusa.com
- www.alrexusa.com