



3D CONCEALED

Installation Instructions



Read All Instructions Before Beginning Installation

The 3D **Concealed** hydraulic hinge is built to last without needing maintenance. The 3D concealed can either be:

1. **Free Swing:** No Hydraulic closing capabilities, therefore, no speed adjustments.
2. **Hydraulic:** Built with our patented hydraulic system, with speed adjustment capabilities.

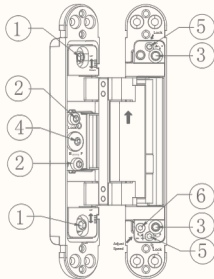
Instructions below remain the same for both products, **except** for speed adjusting.

Note: The 3D Concealed hinge is handed! Please look at handing markings to ensure proper installation!

Door Gap Adjustment Instructions

Before You Start:

- Routing guides and specifications can be found on our website: www.AlexUSA.com
- **DO NOT** remove the plastic stoppers on the hydraulic hinges, these stoppers prevent the hinge from closing, allowing for necessary installation and adjusting.
- **IMPORTANT:** All hinges on the same door leaf should be adjusted as uniformly as possible to ensure their axis remain aligned—this is especially important when installing three or more hinges. Misalignment can significantly impair the hydraulic performance.



- ① Door Gap Adjustment Amount (up + down):
 $\pm 2.5\text{mm}$ (0.098")
- ② Door Gap Adjustment Amount (front + back):
 $\pm 1.5\text{mm}$ (0.059")
- ③ (Door Gap Adjustment Amount (left + right):
 $\pm 2\text{mm}$ (0.079")
- ④ Locking Screw
- ⑤ Locking Screws
- ⑥ Speed Control Adjustment

- **IF NEEDED:** Adjust the **Upper/Lower** door gaps of the door leaf $\pm 2.5\text{mm}$ (0.098")
 - Loosen the upper and lower screw ⑤; Loosen the locking screw ④; Move the door leaf up and down to the appropriate position, then lock the door leaf upper and lower screw ⑤. Lastly, tighten down the locking screw ④ to lock the position.
- **IF NEEDED:** Adjust the **Front/Back** positions of the door leaf $\pm 1.5\text{mm}$ (0.059")
 - Loosen the two screws ② to adjust the door leaf forward or backward. Before making any adjustments, ensure that locking screw ④ is loosened. After completing the adjustment, re-tighten screw ④ to secure the door leaf in place.
- **IF NEEDED:** Adjust the **Left/Right** door gaps of the door leaf $\pm 2\text{mm}$ (0.079")
 - Loosen screws ⑤ then adjust screws ③. During the adjustment process, adjust the screws ③ the same amount to ensure heights of both ends are adjusted as consistently as possible.

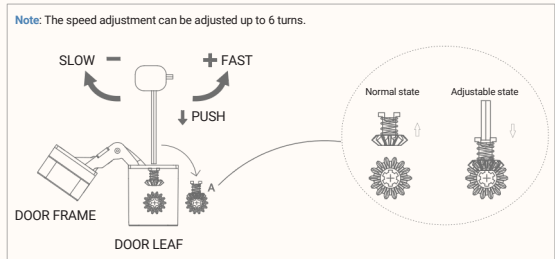
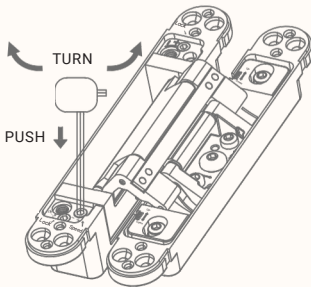
Speed Adjustment Instructions (Hydraulic Hinges Only)

Once the Alrex hinges are installed, open and close the door to see how it moves. Then, follow these steps to adjust it:

Step 1: Speed Adjustment

This adjustment is adjusting the speed of the hydraulic fluid being released.

1. Insert the hex key into the adjustment hole, then gently press in and turn the speed control screw to adjust the closing speed.



Note: During adjustment, if there is a noticeable torque change (e.g., internal gear engagement noise), stop twisting immediately. This indicates the adjustment limit has been reached. Continuing to adjust may damage the mechanism.



Installation Video/Tutorial



Routing Video/Tutorial

Hinges aren't an afterthought... they're our only thought!

ALREX USA, LLC

417 E. Second St, Rochester, MI 48307

(248) 617-4851

support@alrexusa.com

www.alrexusa.com