

LCN®

1450 Series

**Medium duty cast aluminum
door closer**



LCN quality and value, backed by
a 25-year warranty.

The 1450 Series cast aluminum closer was specially designed to deliver consistent, dependable, long-term performance in frequently-used, low-abusive traffic areas. The patent-pending LCN design, featuring the industry's most common hole pattern, is an excellent choice for a range of applications — from aftermarket replacement, to aluminum store fronts, to new construction projects — anywhere quality, reliability and value are important.

The 1450 Series also looks as good as it functions, with a standard slim line cover, optional full plastic cover or optional full metal cover, in six available standard finishes, as well as custom colors. The result is a great look with a long list of valuable features — plus LCN quality, engineering and service — all at a competitive price.

Key Features

- Cast Aluminum Body
- Patent Pending Design
- Peel-n-Stick Templates
- Universal Screw Pack
- Full Complement Bearing
- All Weather Fluid
- Adjustable Spring Size 1-6
- Non-Handed
- 25 Year Warranty

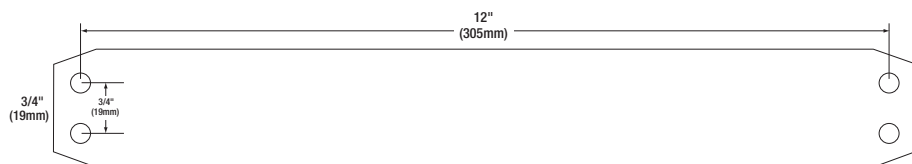
With LCN, you get the great product features you need, plus so much more.

Every 1450 Series closer we make is backed by LCN's proven history of providing the highest-quality, most reliable performance in the industry. Plus, with LCN you get the most knowledgeable, responsive customer service and the best technical support team in the business – with more than 150 years of combined experience. That's the kind of added value you can count on to meet your needs, every single time.

1450 SERIES CROSS REFERENCE	
LCN	1450
Norton	8000
Sargent	1430
Yale	3000
Dorma	8600

1450 Series Specifications

Certifications	Grade 1 - ANSI A156.4, UL/cUL, ADA, 100 Hour Salt Spray, Meets BAA - Buy American Act
Body Construction	<ul style="list-style-type: none"> Cast Aluminum Body Full Complement Bearing 1 1/4" Piston Diameter 5/8" Diameter Heat Treated Pinion Journal
Fluid	All Weather
Handing	Non-Handed
Templating	Peel-n-Stick Templates - 3/4" x 12" Mounting Hole Pattern
Size	Adjustable Spring Size 1-6
Warranty	25 Years
Fasteners	Standard Universal Screw Pack includes Self Reaming and Tapping Screws (SRT), Machine Screws, Wood Screws and Thru Bolts (Torx security and longer thru bolts optional)
Arms	<p>Standard Tri-Pack includes arms for Regular Pull Side, Top Jamb or Parallel Arm Mounting</p> <p>Optional Arms:</p> <ul style="list-style-type: none"> Hw/PA - Hold Open w/62PA (3049; 62PA) LONG - Long Arm for Deep Reveal (3077; 79LR) HLONG - Hold Open Long Arm (3049; 3048L) EDA - Extra Duty Parallel Arm (3077EDA) EDA/62G - Extra Duty Parallel Arm - Extra Clearance (3077EDA/62G) HEDA - Hold Open Extra Duty Parallel Arm (HEDA) CUSH - Cush-n-Stop (3077CNS) HCUSH - Hold Open Cush-n-Stop (3049CNS) SCUSH - Spring Cush-n-Stop (3077SCNS) SHCUSH - Spring Hold Open Cush-n-Stop (3049SCNS) REG/62A - Regular Arm-Extra Clearance (3077; 62A) Hw/62A - Hold Open - Extra Clearance (3049; 62A)
Finishes/Colors	<ul style="list-style-type: none"> Aluminum (689) Statuary Bronze (690) Light Bronze (691) Black (693) Dark Bronze (695) Brass (696) Custom colors optional
Brackets	<ul style="list-style-type: none"> 30 - Cush Shoe Support (30) 62A - Auxiliary Shoe for Parallel Mount - Extra Clearance (62A) 62PA - Auxiliary Shoe for Parallel Mount (62PA) 419 - Panel Adaptor for Parallel Mount (419)
Accessories	<ul style="list-style-type: none"> 18 - Plate for Hinge Side Mount (18) 18PA - Plate for Parallel Arm (18PA) 18FC - Plate Used with Full Cover for Pull Side and Top Jam Arm (18FC) 18PAFC - Plate Used with Full Cover for Parallel Arm (18PAFC) 61 - Blade Stop for Cush Shoe Support (61) Slim Line Plastic Cover (72); Optional Handed Metal Cover (72MC); Optional Full Plastic Cover (72FC) Optional SRI



Contact us at 877-671-7011 to consult with an LCN Representative or Technical Advisor.

Visit us at us.allegion.com/brands/lcn for product information and additional resources.

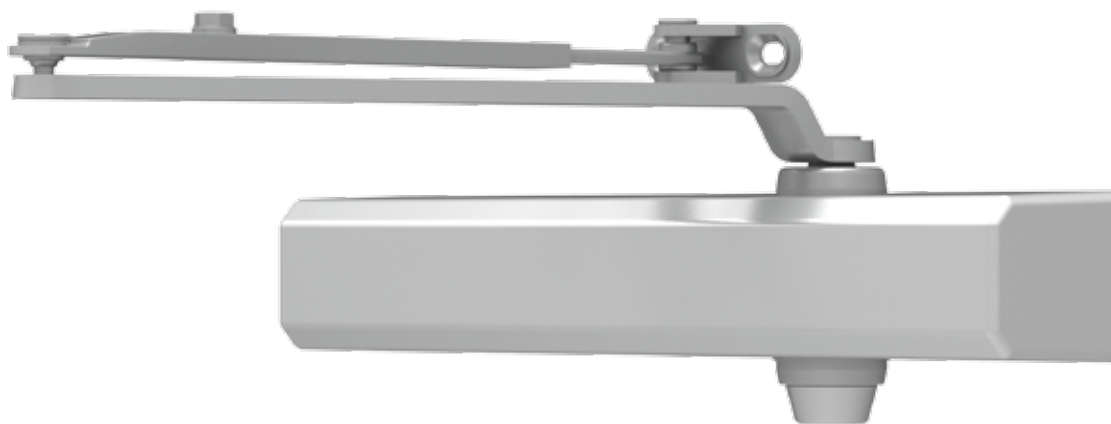
About Allegion

Allegion (NYSE: ALLE) creates peace of mind by pioneering safety and security. As a \$2 billion provider of security solutions for homes and businesses, Allegion employs more than 8,000 people and sells products in more than 120 countries across the world. Allegion comprises more than 25 global brands, including strategic brands CISA®, Interflex®, LCN®, Schlage® and Von Duprin®. For more, visit www.allegion.com.

aptiQ ■ LCN ■ SCHLAGE ■ STEELCRAFT ■ VON DUPRIN



©2015 Allegion
010659
www.allegion.com/us

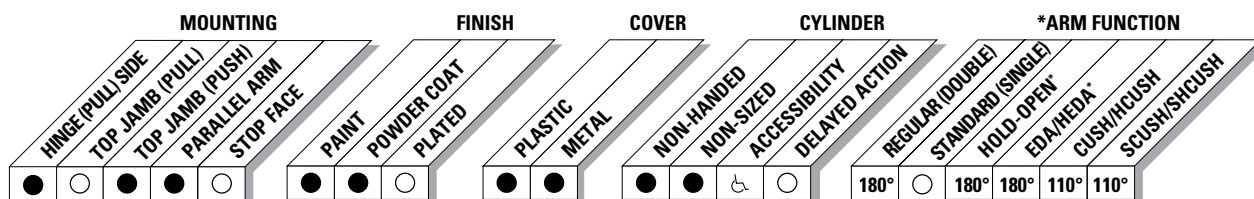


The 1450 Series cast aluminum closer was specially designed to deliver consistent, dependable, long-term performance in frequently-used, low-abusive traffic areas. The patented design, featuring the industry's most common hole pattern, is an excellent choice for a range of applications - from aftermarket replacement to aluminum store fronts, to new construction projects - anywhere quality, reliability and value are important.

Certifications	Grade 1 - ANSI A156.4, UL 10C, ADA, 100 Hour Salt Spray, Meets BAA - Buy American Act	Cover	<ul style="list-style-type: none"> ■ Slim Line Plastic, Standard ■ Full Plastic and Metal, Optional
Body Construction	<ul style="list-style-type: none"> ■ Cast Aluminum Body ■ Full Complement Bearing ■ 1-1/4" Diameter Piston ■ 5/8" Diameter Single Heat Treated Pinion Journal 	Fasteners	Universal Screw Pack (UNIV)
Fluid	All Weather Fluid	Mounting	Hinge (Pull Side), Top Jamb (Push Side), Parallel Arm (Push Side)
Handing	Non-Handed	Arms	Standard regular pull side, and top jamb
Templating	Peel-n-Stick templates - 3/4" x 12" Mounting Hole Pattern	Finishes/Colors/ Powder Coat	<ul style="list-style-type: none"> ■ Aluminum (689) ■ Statuary Bronze (690) ■ Light Bronze (691) ■ Black (693) ■ Dark Bronze (695) ■ Brass (696) ■ Custom colors optional ■ Optional SRI primer - powder coat only
Size	Adjustable Spring Size 1-6		
Warranty	25 years		

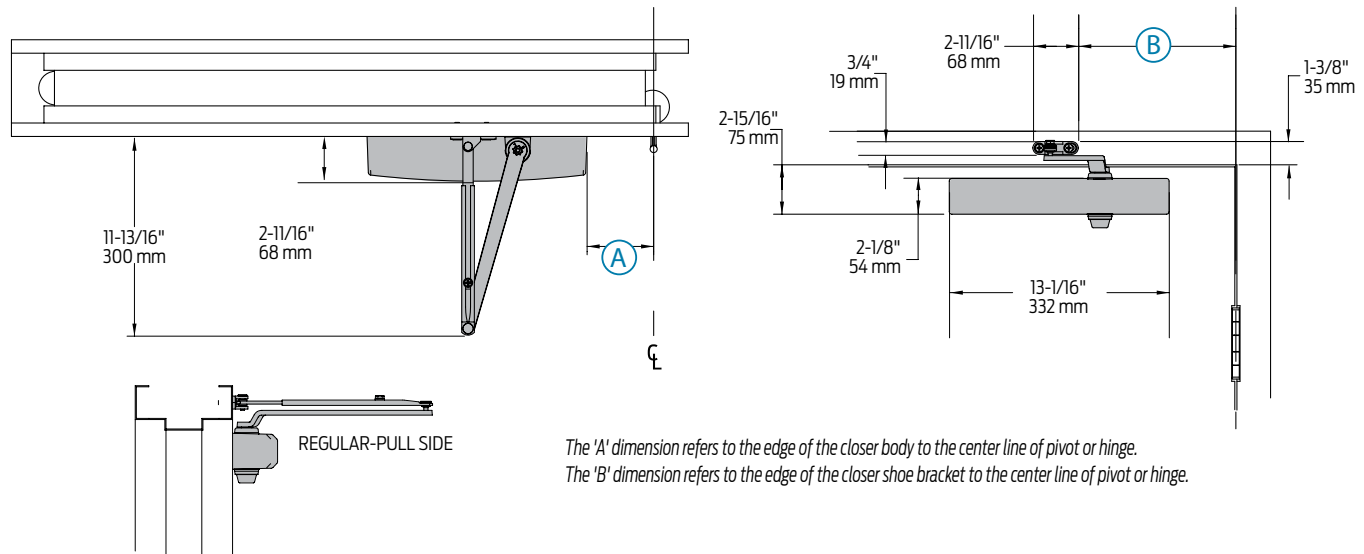
Special Templates

Customized installation templates or products may be available to solve unusual applications. Contact LCN Product Support for assistance.

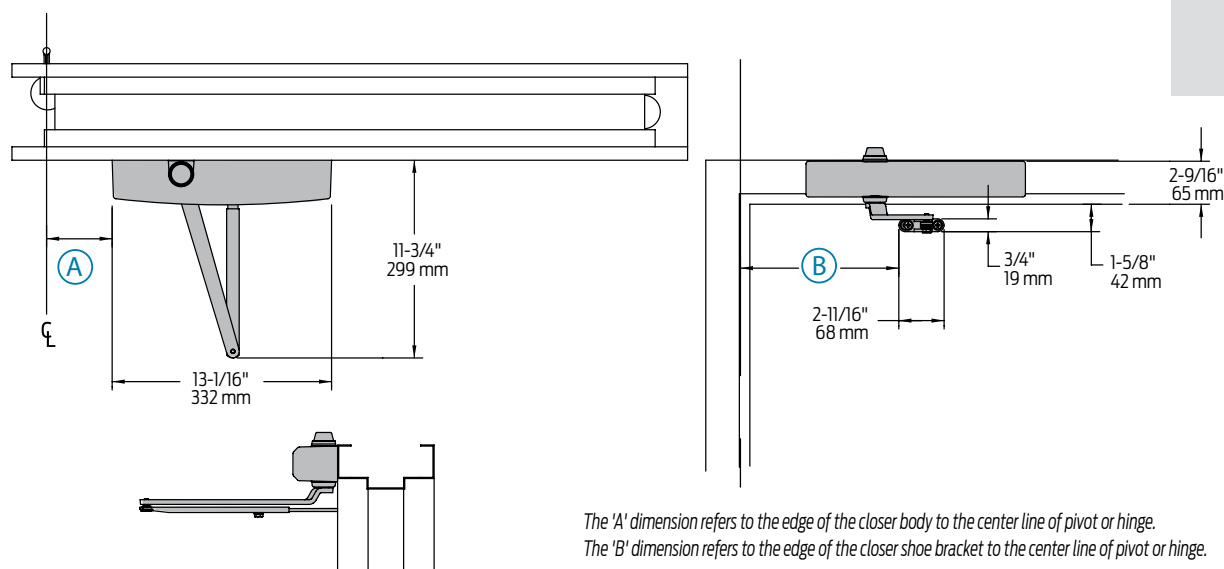


● AVAILABLE
○ NOT AVAILABLE

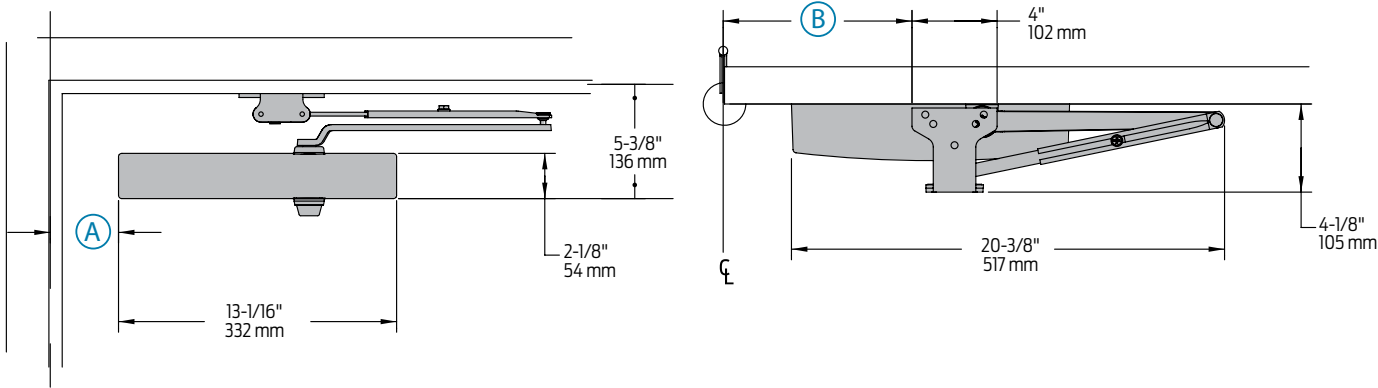
♿ Closer available with less than 5.0 lbs. opening force on 36" door.
* Maximum opening/hold-open point with standard template.
D = For designer series only.



Butt Hinges	Should not exceed 5" (127 mm) in width
Auxiliary Stop	Recommended at hold-open point or where a door cannot swing 180°
Reveal	Should not exceed 3/4" (19 mm) for regular arm or 1/2" (13 mm) for hold-open arm
Top Rail	<ul style="list-style-type: none"> Less than 2-1/2" (64 mm) requires PLATE, 1450-18 With Full cover, use PLATE, 1450-18FC. Plate requires 1-1/2" (38 mm) minimum
Clearance	2-3/8" (60 mm) behind door required for installation
Maximum opening	100°: A = 7" (102 mm) B = 12-3/8" (314 mm)
	101° to 130°: A = 5-1/2" (140 mm) B = 10-7/8" (276 mm)
	131° to 180°: A = 4" (102 mm) B = 9-3/8" (238 mm)
	Hold-open points up to maximum opening with hold-open arm *Frame and trim permitting.



Butt Hinges	Should not exceed 5" (127 mm) in width		
Auxiliary Stop	Recommended at hold-open point or where a door cannot swing 180°		
Reveal	Arm Type	Reveal	Max Opening
	Regular Arm	5"	Up to 170°
	Regular Arm	3-3/4"	Up to 180°
	Long Arm	8"	Up to 155°
	Hold-Open Arm	2-3/4"	Up to 180°
	Long Hold-Open Arm	4-7/8"	Up to 140°
Top Rail	Requires 2-1/8" (54 mm) minimum. 3-3/8" (86 mm) minimum with closer on PLATE, 1450-18.		
Head Frame	Less than 1-3/4" (44 mm) requires PLATE, 1450-18. For flush ceiling condition with 1-3/4" (45 mm) head frame, use PLATE, 1450-18		
Maximum opening	100°: A=7" (102 mm) B = 12-3/8" (314 mm)		
	101° to 130°: A= 5-1/2" (140 mm) B = 10-7/8" (276 mm)		
	131° to 180°: A= 4" (102 mm) B = 9-3/8" (238 mm)		
	Hold-open points up to maximum opening with hold-open arm. *Frame and trim permitting.		

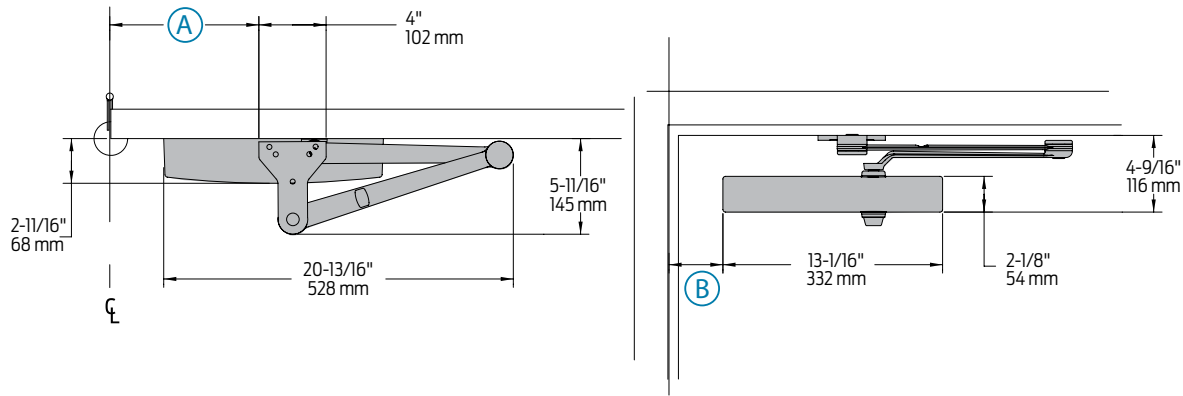


Butt Hinges	Should not exceed 5" (127 mm) in width		
Auxiliary Stop	Recommended at hold-open point, where a door cannot swing 180°, or where CUSH-N-STOP arm is not used		
Top Rail	<ul style="list-style-type: none">Less than 5-1/4" (133 mm) measured from the soffit requiresPlate requires 1-1/4" (32 mm) minimum.		
	Cover	Minimum Top Rail (measured from soffit)	Plate Required
	Plastic	3-1/2" (89 mm)	1450-18
		2-1/4" (57 mm)	1450-18PA
	Metal	3-1/2" (89 mm)	1450-18FC
		2-1/4" (57 mm)	1450-18PAFC
Clearance	1450-62PA shoe projects 4-1/8" (105 mm) from door face		
Head Frame	Flush or single rabbeted requires PA SHOE ADAPTER, 1450-418		
Stop Width	Minimum 1" (25 mm)		
Blade Stop	Clearance, requires 1/2" (13 mm) BLADE STOP SPACER, 1450-61		
Auxiliary Shoe	1450-62A allows installation of regular arm with overhead holder/stop		
Maximum opening	Regular or hold-open arm can be templated to		
	120°: A = 3-3/16" (81 mm) B = 8-7/8" (225 mm)		
	121° to 180°: A = 11/16" (17 mm) B = 6-3/8" (162 mm)		
	Hold-open points up to maximum opening with hold-open arm.		

Notes:

- PA shoe is included with Rw/PA Arm
- 1450 closer includes 1450-201 FIFTH HOLE SPACER to support PA SHOE

EDA/HEDA mount

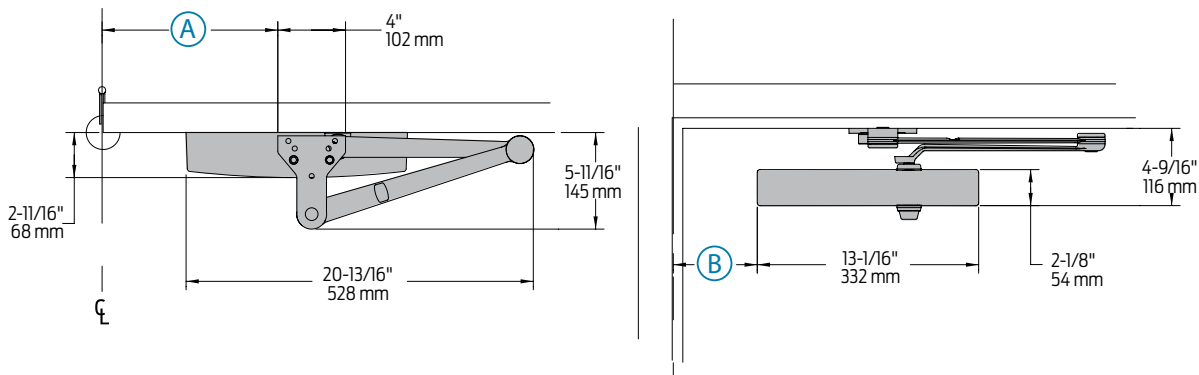


1450
Series

Mounting details

EDA and CUSH -N-STOP
mounting

CUSH/HCUSH/SCUSH /SHCUSH mount



The 'A' dimension refers to the edge of the closer body to the center line of pivot or hinge.
The 'B' dimension refers to the edge of the closer shoe bracket to the center line of pivot or hinge.

Clearance	1450-62EDA or CUSH shoe projects 5-11/16" (144mm) from door face	
Head Frame	Flush or rabbeted requires CUSH FLUSH PANEL ADAPTER, 1450-419	
EDA or CUSH ARM	Requires soffit SHOE SUPPORT, 1450-30 for fifth screw anchorage where reveal is less than 3-1/16" (78 mm)	
Spring CUSH	Dead stop points are approximately 5° more than templated stop points	
Maximum opening	EDA template allows 110°. Hold-open point up to maximum opening	CUSH arms can be templated for maximum opening/hold-open point at 85°
	120°: A = 8-7/8" (225 mm) B = 3-3/16" (81 mm)	85°: A = 10-3/8" (279 mm) B = 4-15/16" (140 mm)
	over 120°: A = 6-3/8" (162 mm) B = 11/16" (17 mm)	90°: A = 9-5/8" (244 mm) B = 4-3/16" (106 mm)
		95°: A = 8-7/8" (225 mm) B = 3-7/16" (87 mm)
		100°: A = 8-1/4" (210 mm) B = 2-13/16" (71 mm)
		105°: A = 7-5/8" (194 mm) B = 2-3/16" (56 mm)
		110°: A = 7" (178 mm) B = 1-9/16" (40 mm)

Note:

• 1450 closers ordered with EDA, CUSH or SPRING CUSH arms include 1450-201 FIFTH HOLE SPACER to support the shoe.

Cylinders



1450-3071
Cast Aluminum Cylinder Assembly

- Non-handed
- Standard

Covers



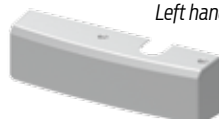
1450-72
Slim Line Plastic Cover

- Non-handed
- Standard



1450-72FC
Full Plastic Cover

- Non-handed
- Optional



Left hand shown

1450-72MC
Metal Cover

- Handed
- Optional

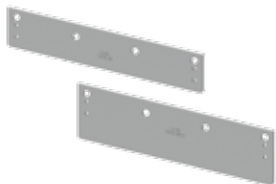
Alternate Cover



1450-72ALT
Alternate Cover

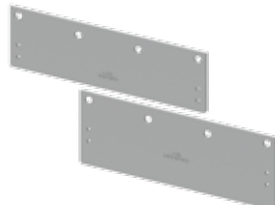
- Non-handed
- Optional, sold separately (not packed with closer)

Installation Accessories



1450-18 / 1450-18FC
Plate

- Required for hinge side mount where top rail is less than 2-1/2" (64 mm)
- Required for top jamb mounting where head frame is less than 1-3/4" (44 mm) or flush ceiling condition exists
- Requires minimum 1-1/2" (38 mm) minimum top rail or 1-1/4" (32 mm) head frame
- With full cover, use PLATE, 1450-18FC



1450-18PA / 1450-18PAFC
Plate

- Required for parallel arm mounting where top rail is less than 4-3/8" (111mm), measured from the stop
- Requires 1-3/4" (44 mm) minimum top rail
- With full cover, use PLATE, 1450-18FC



1450-30
CUSH Shoe Support

- Provide anchorage for fifth screw used with CUSH arms where reveal is less than 3-1/16" (78mm)



1450-61
Blade Stop Spacer

- Lowers parallel arm shoe to clear 1/2" (13 mm) blade stop.



1450-62PA
PA Shoe

- Required for parallel arm mounting



1450-62A
Auxiliary Shoe

- Requires a top rail of 7" (178mm). Optional shoe replaces -62PA for parallel arm mounting of regular arm with overhead holder/stop



1450-419
PA Flush Panel Adapter

- Provides horizontal mounting surface for PA, EDA or CUSH shoe on single rabbeted or flush frame

Arms



1450-3077

Regular Arm w/PA

- Non-handed
- Mounts hinge side or top jamb
- Includes PA SHOE, 1450-62PA required for parallel arm mounting



1450-3077L

Long Arm

- Non-handed
- Includes LONG ROD AND SHOE, 1450-79LR for top jamb mount with deep reveals
- Optional



1450-3049

Hold-Open Arm w/PA

- Non-handed
- Mounts hinge side, top jamb or parallel arm (62PA required)
- Hold-open adjustable at shoe
- Optional



1450-3049L

Long Hold-Open Arm

- Non-handed
- Includes LONG HEAD AND TUBE, 1450-3048L for top jamb mount with deep reveals
- Optional



1450-3077EDA

Extra Duty Arm

- Non-handed
- Features solid forged steel main and forearm for potentially abusive installations
- Optional 1450-3077EDA/G for blade stop clearance



1450-3077EDA/62G

Extra Duty Arm w/ 62G

- Non-handed
- Features solid forged steel main and forearm for potentially abusive installations
- Optional 1450-3077EDA/G for blade stop clearance



1450-3049EDA

Hold-Open Extra Duty Arm

- Handed arm
- Provides hold-open function adjustable at shoe
- Optional



1450-3077CNS

Cush-n-Stop® Arm

- Non-handed
- Features solid forged steel main arm and forearm with stop in soffit shoe
- Optional



1450-3049CNS

HCUSH Arm

- Non-handed
- Provides hold-open function with templated stop/hold-open points
- Handle controls hold-open function
- Optional



1450-3077SCNS

Spring CUSH Arm

- Non-handed
- For abusive applications features solid forged steel main arm and forearm with spring loaded stop in the soffit shoe
- Optional



1450-3049SCNS

Spring HCUSH Arm

- Non-handed
- For abusive applications features solid forged steel main arm and forearm with spring loaded stop in the soffit shoe
- Handle controls hold-open function
- Optional

How-to-order 1450 Series closers

Select finish

- ☐ Standard Powder Coat _____
Aluminum, Dark Bronze, Statuary,
Light Bronze, Black, Brass

Closer will be shipped with:

- Standard cylinder
- Standard cover
- Tri pack arm (Rw/PA)
- Universal screw pack
unless options listed below are selected.

Closer options

Cover

- ☐ Full Plastic (FC)
- ☐ Metal (specify right or left hand) (MC)
- ☐ Alternate Cover (ALT) (sold separately from product)

Finish

- ☐ Custom Powder Coat (RAL)
(Metal cover required)
- ☐ SRI primer

Arm

- ☐ Regular w/62PA (Rw/PA)
- ☐ Long (LONG)
- ☐ Regular w/62A (Rw/62A)
- ☐ Hold-Open w/62PA (Hw/PA)
- ☐ Long Hold-Open (HLONG)
- ☐ Extra Duty (EDA) (optional -62G)
- ☐ Hold-Open Extra Duty (HEDA) - specify handing
- ☐ Cush-N-Stop (CUSH)
- ☐ HCush (HCUSH)
- ☐ Spring Cush (SCUSH)
- ☐ Spring HCush (SHCUSH)

Optional screw packs

- ☐ TORX Machine Screw (TORX)
- ☐ TB* & TORX Machine Screw (TBTORX)
- * Specify door thickness if other than 1-3/4"

Installation accessories

- ☐ Plate, 1450-18
- ☐ Plate, 1450-18FC
- ☐ Plate, 1450-18PA
- ☐ Plate, 1450-18PAFC
- ☐ CUSH Shoe Support, 1450-30
- ☐ Blade Stop Spacer, 1450-61
- ☐ Auxiliary Shoe, 1450-62A
- ☐ PA Flush Panel Adapter, 1450-419

Special template

- ☐ ST- _____

Meets Buy American Act

- ☐ BAA

Table of sizes

- Select closer based on width of door.
- The spring power of a 1450 cylinder is field adjustable from size 1 through size 6 and is shipped adjusted to size 3.

Exterior (and Vestibule) door width

	24"	30"	36"	42"	48"
	610mm	762mm	914mm	1067mm	1219mm
*1450	size 3	size 4	size 5	size 6	
	Minimum door width				

Interior door width

	24"	34"	38"	48"	54"	60"
	610mm	864mm	965mm	1219mm	1372mm	1524mm
*1450	size 2	size 3	size 4	size 5	size 6	
	Minimum door width					


→ Indicates recommended range of door width for closer size.
* Adjustable Size 1 thru 6.

Reduced opening force 1450 Series closers

CAUTION! Any manual door closer, including those certified by BHMA to conform to ANSI Standard A156.4, that is selected, installed and adjusted based on ADA or other reduced opening force requirements may not provide sufficient power to reliably close and latch a door.

Refer to POWER OPERATORS section for information on systems that meet reduced opening force requirements without affecting closing power.

* Maximum opening force.

	DOOR WIDTH	36"	42"	48"
	8.5* lbs.	1450	1450	1450
	5.0* lbs.	1450	1450	1450