

FALCON®

SC80A Series

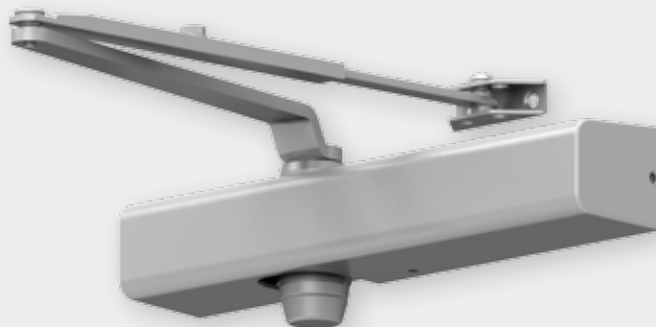
Medium duty, Grade 1 door control

Overview

The Falcon® SC80A Series is perfect for medium duty applications like retail storefronts, institutional storerooms, apartment stairwells and clinics in order to make door operations smooth and secure. The SC80A Series brings Grade 1 durability and reliability to interior and exterior aluminum storefronts. An adjustable design ensures flexible installation and ADA compliance. The Falcon SC80A Series provides a solid product at a solid price.

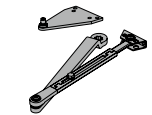
Features and benefits:

- Single piece cast aluminum body
- Fully adjustable sizes 1-6
- Separate adjustable general speed, latch speed and backcheck
- Industry common hole pattern retrofittable to Norton 8000
- Non-handed for left or right swinging doors
- Heat treated pinion and steel piston
- Staked valves
- Universal screw pack, now including SRTs screws
- Meets ANSI A117.1
- Certified ANSI/BHMA A156.4, Grade 1
- Cover is UL approved for use in fire rated assemblies
- UL listed and compliant to UL10C and UBC 7-2 (1997)
- 10-year warranty

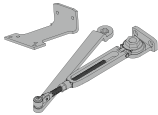


The right accessories for every job

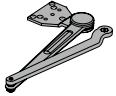
The non-handed design of the SC80A Series, paired with its mounting position versatility, means you can install this closer just about anywhere depending on the needs of the door opening. A host of arm types and accessories makes it easy to fit the demands of a variety of applications.



**Regular
(RW/PA)**



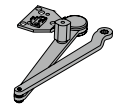
**Hold open
(HW/PA)**



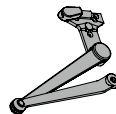
**Heavy-duty regular
(HD/PA)**



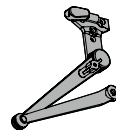
Dead stop (DS)



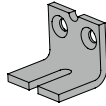
**Dead stop
hold open (DS/HO)**



Spring-n-Stop (SS)

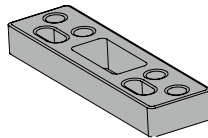


**Spring-n-Stop
hold open (SS/HO)**



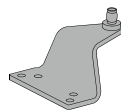
Soffit shoe support

Provides anchorage for fifth screw used with soffit shoe where reveal is less than 3 1/16" (78mm).



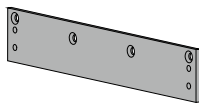
Blade stop spacer

Required to lower parallel arm shoe to clear 1/2" (13mm) blade stop.



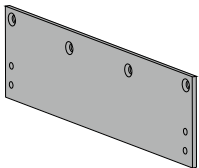
Auxiliary shoe

Requires a top rail of 7" (178mm). Optional shoe replaces PA shoe for parallel arm mounting of regular arm with overhead holder/stop.



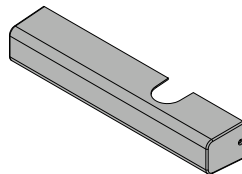
Plate

Required for top jamb mounting where head frame is less than 1 3/4" (44mm) or flush ceiling conditions exist.



Parallel arm plate

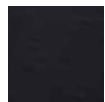
Required for parallel arm mounting where top rail is less than 4 3/8" (111 mm), measured from the stop. Plate requires 1 7/8" (48mm) minimum top rail measured from stop.



Cover

Non-handed, slim line plastic cover comes standard unless otherwise specified. Optional, non-handed, full plastic cover available when specified.

Available finishes



622
Matte black¹



689
Aluminum



695
Dark bronze



696
Brass

¹ Available on the standard cylinder, RWPA arm, HWPA arm, and DS arm, HDPA arm.

About Allegion

Allegion (NYSE: ALLE) is a global pioneer in safety and security, with leading brands like CISA®, Interflex®, LCN®, Schlage®, SimonsVoss® and Von Duprin®. Focusing on security around the door and adjacent areas, Allegion produces a range of solutions for homes, businesses, schools and other institutions. Allegion is a \$2 billion company, with products sold in almost 130 countries. For more, visit www.allegion.com.

SC80A Series



Medium-duty applications like retail storefronts, cafes and clinics that need a closer that makes door operation smooth and secure. The Falcon SC80A Series brings ANSI grade 1 durability and reliable performance to interior and exterior doors. An adjustable design ensures flexible installation and ADA compliance.

Standard features

- Single piece cast aluminum body
- Fully adjustable sizes 1-6
- Separate adjustable general speed, latch speed and backcheck
- Closer mounts hinge side, top jamb or parallel arm when either the RW/PA or HW/PA arm is specified
- Non-handed for left or right swinging doors
- 1 1/4" diameter heat treated steel piston
- Heat-treated pinion
- Universal screw pack for aluminum, hollow metal, and wood doors, includes self reaming, and tapping screws
- Staked valves
- Meets ANSI A117.1
- ANSI/BHMA A156.4, grade 1
- UL listed and compliant to UL10C and UBC 7-2 (1997)
- Cover is UL approved for use in fire rated assemblies
- 10-year warranty
- Retrofittable to Norton 8000 hole pattern

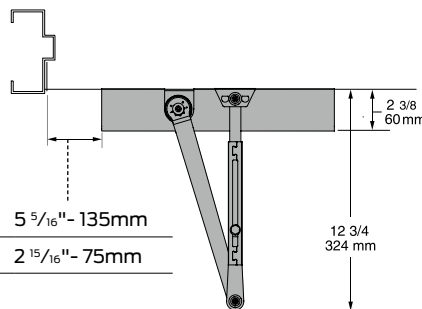
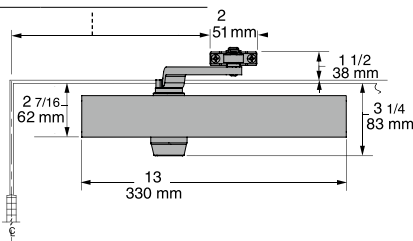
Listings and ratings

The Falcon SC81A is UL listed and compliant to UL10C and UBC 7-2 (1997). Additionally, the SC81A is designed to meet the American Disabilities Act (ADA) and ANSI A117.1. The SC81A is rated ANSI/BHMA A156.4, Grade 1.

SC80A Series hinge (pull side)

To 120° 11 3/4" - 298mm

121° to 180° 8 1/2" - 216mm



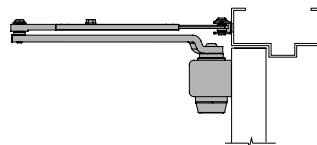
Butt hinges should not exceed 5" (127mm) in width.

Auxiliary stop is recommended at hold-open point or where a door cannot swing 180°.

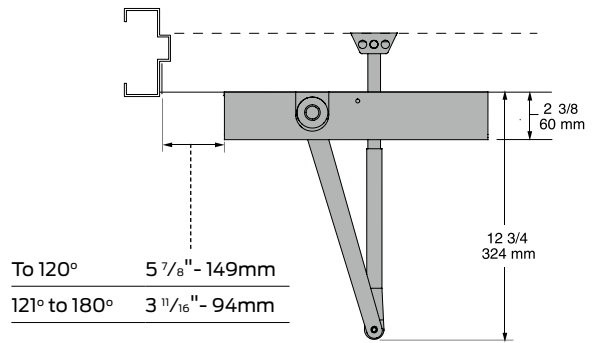
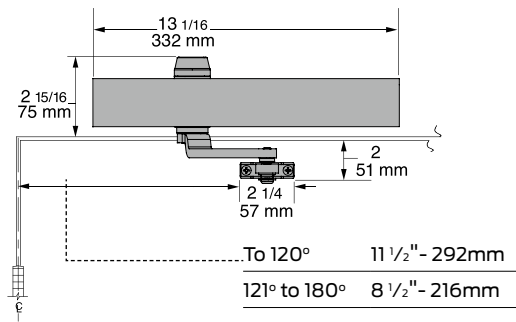
Reveal should not exceed 3/4" (19mm) for regular arm or hold-open arm.

Clearance of 2 3/8" (60mm) behind door required for 90° installation.

Delayed action add suffix "DEL" to selected cylinder (ex. SC80A DEL). Delays closing from maximum opening to approximately 70° with adjustable delay time.



SC80A Series top jamb (push side)



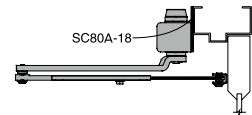
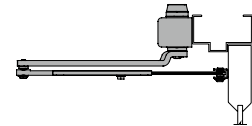
Butt hinges should not exceed 5" (127mm) in width.

Auxiliary stop is recommended at hold-open point or where a door cannot swing 180°.

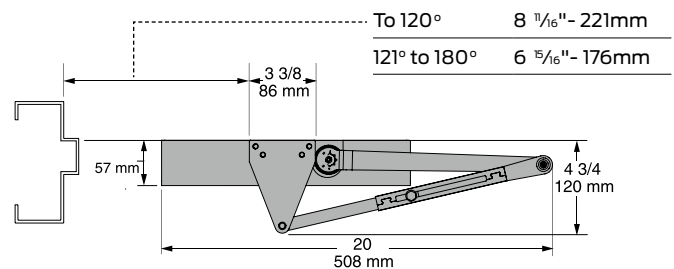
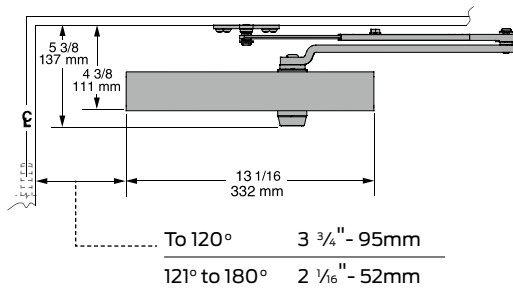
Reveal should not exceed 3 1/4" (83mm) for regular arm or hold-open arm.

Head frame less than 2 5/16" (59mm) requires plate SC80A-18.

Delayed action add suffix "DEL" to selected cylinder (ex. SC80A DEL). Delays closing from maximum opening to approximately 70°, with adjustable delay time.



SC80A Series parallel (push side)

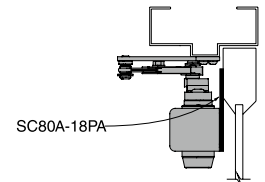
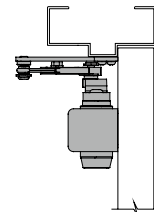


Butt hinges should not exceed 5" (127mm) in width.

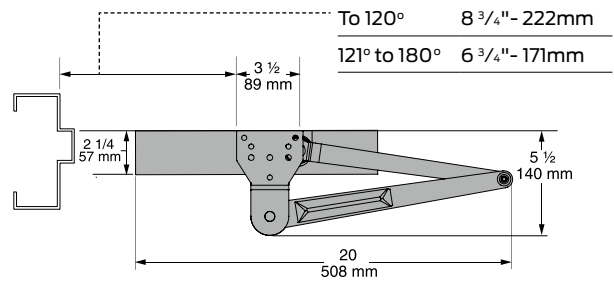
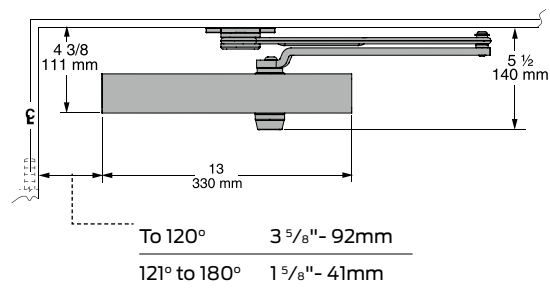
Auxiliary stop is recommended at hold-open point or where a door cannot swing 180°.

Top rail less than 4 3/8" (111mm) measured from stop requires plate SC80A-18PA.

Delayed action add suffix "DEL" to selected cylinder (ex. SC80A DEL). Delays closing from maximum opening to approximately 70°, with adjustable delay time.



SC80A Series heavy duty (parallel)

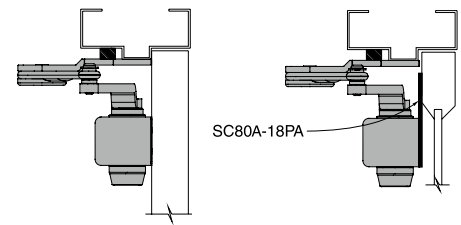


Butt hinges should not exceed 5" (127mm) in width.

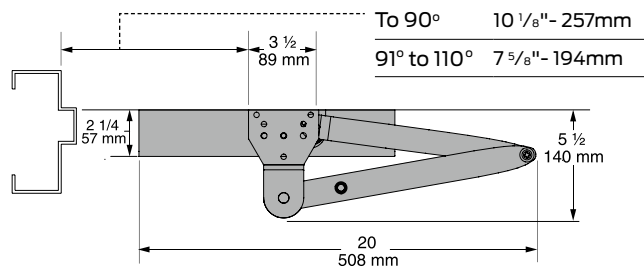
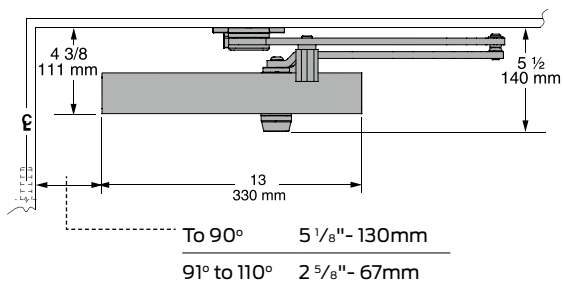
Auxiliary stop is recommended at hold-open point, where a door cannot swing 180°, or where Dead stop or Spring-n-stop arm is not used.

Top rail less than 4 3/8" (111mm) measured from stop requires plate SC80A-18PA.

Delayed action add suffix "DEL" to selected cylinder (ex. SC80A DEL). Delays closing from maximum opening to approximately 70°, with adjustable delay time.



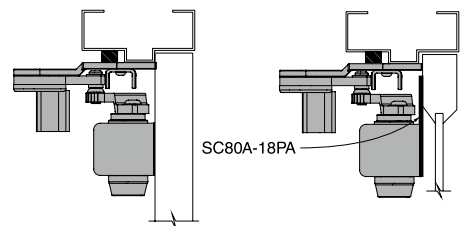
SC80A Series dead stop HO (parallel)



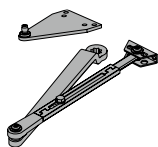
Butt hinges should not exceed 5" (127mm) in width.

Top rail less than 4 3/8" (111mm) measured from stop requires plate SC80A-18PA.

Delayed action add suffix "DEL" to selected cylinder (ex. SC80A DEL). Delays closing from maximum opening to approximately 70°, with adjustable delay time.

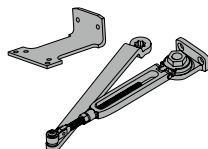


Arm types All SC80A Series closers come with slim cover, standard arm and screw pack.



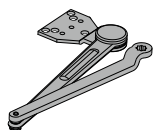
Regular arm, SC80A-3077PA

Non-handed arm with adjustable forearm assembly to accommodate a range of doors and frame reveal conditions. Mounts hinge side, top jamb or parallel arm. PA shoe included to allow installation in a parallel arm configuration.



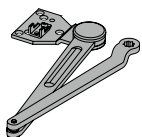
Hold-open regular arm, SC80A-3049PA

Optional, non-handed, hold open arm with adjustable forearm assembly to accommodate a range of doors and frame reveal conditions. Mounts hinge side, top jamb or parallel arm. PA shoe included to allow installation in a parallel arm configuration.



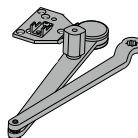
Heavy duty arm, SC80A-3077HD

Optional, non-handed, stamped, heavy duty, parallel arm for use in high-traffic applications.



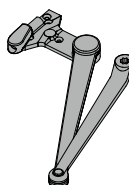
Dead stop arm, SC80A-3077DS

Optional, non-handed, stamped, heavy duty, parallel arm includes a positive mechanical stop and non-adjustable forearm assembly for high volume traffic or potentially abusive installation conditions.



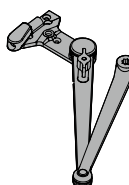
Dead stop hold-open Arm, SC80A-3049DS

Optional, non-handed, stamped, heavy duty, hold-open parallel arm includes a positive mechanical stop and non-adjustable forearm assembly for high volume traffic or potentially abusive installation conditions. Also includes a manually selective hold-open function.



Spring-n-stop arm, SC80A-3077SS

Optional, non-handed, extra heavy-duty, forged parallel arm includes an integral spring stop and non-adjustable forearm assembly for high volume traffic or potentially abusive installation conditions.



Spring-n-stop hold-open arm, SC80A-3049SS

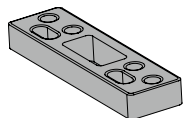
Optional, non-handed, extra heavy-duty, forged parallel arm includes an integral spring stop and non-adjustable forearm assembly for high volume traffic or potentially abusive installation conditions. Also includes a manually selective hold-open function.

Installation accessories



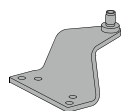
Soffit shoe support, SC80A-30

Provides anchorage for fifth screw used with soffit shoe, where reveal is less than 3 1/16" (78mm).



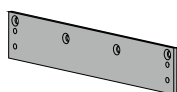
Blade stop spacer, SC80A-61

Required to lower parallel arm shoe to clear 1/2" (13mm) blade stop.



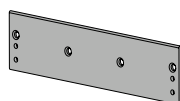
Auxiliary shoe, SC80A-62A

Requires a top rail of 7" (178mm). Optional shoe replaces PA shoe for parallel arm mounting of regular arm with overhead holder/stop.



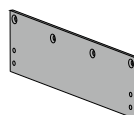
Plate, SC80A-18

Required for top jamb mounting where head frame is less than 1 3/4" (44mm) or flush ceiling conditions exists.



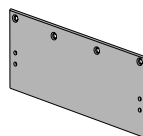
Plate, SC80A-18FC

Required for top jamb mounting where head frame is less than 1 3/4" (44mm) or flush ceiling conditions exist. To be used with a full cover SC80A-72FC.



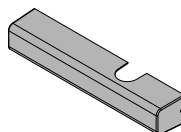
Plate, SC80A-18PA

Required for parallel arm mounting where top rail is less than 4 3/8" (111mm), measured from the stop. Plate requires 1 7/8" (48mm) minimum top rail measured from stop.



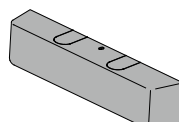
Plate, SC80A-18PAFC

Required for parallel arm mounting where top rail is less than 4 3/8" (111mm), measured from the stop. Plate requires 1 7/8" (48mm) minimum top rail measured from stop. To be used with a full cover SC80A-72FC.



Cover, SC80A-72

Standard, non-handed, slim line plastic cover encloses the closer body with a cap on the unused pinion shaft.



Cover, SC80A-72FC

Optional non-handed, full plastic cover encloses the closer body.